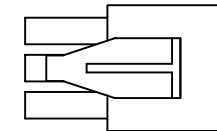
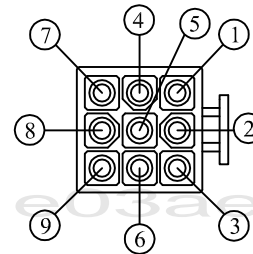


Connector A

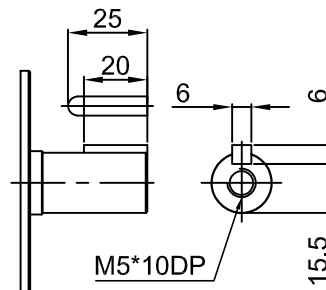
| Power Pin Assignment | |
|----------------------|--------------|
| Signal | AMP-172168-1 |
| U | 3 |
| V | 2 |
| W | 1 |
| ⏏ | 4 |
| B+ | 5 |
| B- | 6 |



Connector B

| Encoder Pin Assignment | | |
|------------------------------------|-----------|--------------|
| Function | Signal | AMP-172169-1 |
| Power | 5V | 1 |
| | 0V | 2 |
| Incremental Signal/ Hall Signal | A/U + | 3 |
| | A/U - | 4 |
| | B/V + | 5 |
| | B/V - | 6 |
| | Z/W + | 7 |
| | Z/W - | 8 |
| Shielding | Shielding | 9 |

Rate Power : 750W
Driver Input Voltage : 220V
Rated Torque : 2.4N-m
Rated Speed : 3000 rpm
Rated Current : 5.1A(Arms)
Encoder : 13-bit Incremental
Brake : Yes
Shaft : Key,Center tap
Oil seal : No



Key Size

| NAME | DWG NO | SHEET | TYPE | MS750W | DATE | 2013.05.28 |
|--------------------------|---------|-------|------|----------|--------------|------------|
| AC SERVO MOTOR | AC22010 | A2 | 1-1 | CUSTOMER | DRN | 邱婉容 |
| HIWIN® MIKROSYSTEM CORP. | | | | SCALE | 1 : X | CHK 鄭立巍 |
| | | | | PART NO | FRMS752B508C | APPD 江新安 |

| ITEM | DATE | MODIFIED | DESCRIPTION | APPD |
|------|------------|----------|--------------------------------|----------------------|
| 1 | 2014.07.08 | 邱婉容 | 1.新增尺寸33 2.更改接頭型號為AMP-172168-1 | U120B-ECN -140407 |