

## AAS58...V / AAM58...V



### Main Features :

- 0-5V or 0-10V output ,RS485 output / programming
- Multi-turn tech: Gear Box, no battery
- Zero setting and counting direction setting function

### Extensive Application:

- ✓ Speed sensing, angle, distance, locus, tilt
- ✓ Solar electrical energy generation
- ✓ Day tracking system feedback
- ✓ Iron and steel metallurgical equipment,
- ✓ Port lifting and transportation machinery, factory automation
- ✓ Use in non-explosion proof environment

### Mechanical specifications

Material	Shell: Aluminum shell
	Flange: Aluminum flange
	Shaft: Stainless steel
Maximum shaft load	Max 80N Axial
	Max 150N Radial
Levels of protection	IP65
Starting torque	25°C, ≤0.5Nm
Maximum speed	6000RPM
Impact resistance	≤ 100g ,3ms
Anti-vibration	≤ 10g ( 10Hz—2000Hz )
Weight	≈ 300g
Working temperature	-40°C—+80°C
Storage temperature	-40°C—+85°C

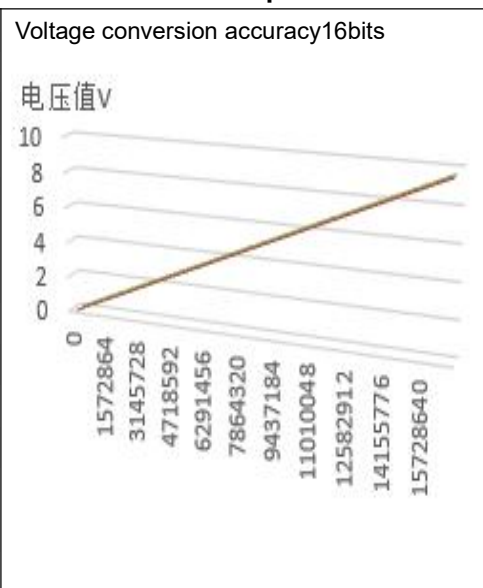
### Qualification

EMC:
Emitted interference: EN61000-6-4
Noise immunity: EN61000-6-2
ISO9001:2015
CE authentication

### Electrical specifications

Interface type 1	0-5V or 0-10V analog voltage output
Interface type 2	RS485 output or Analog programming
Output code system	ASCII code
Baud rate	4800    9600    19200    38400    115200
Data response	8ms    4ms    2ms    1.8ms    1.8ms
Allowed addresses range	0 -- 99
No-load current	≤80mA
Steps per revolution	Single-turn max 13bits (8192)
Revolutions (turn)	Multi-turn max 14 bits (16384)
Repeatability precision	±2bits ( related to the installation accuracy and the concentricity of the shaft )
Counting direction	Can be set(The factory default is faced with Increasing shaft clockwise Data )
External position	Can be set,Turn-on delay >100ms

### 0-10V linear correspondence table



## RS485 communication instructions

- Baud rate: **4800bps; 9600bps; 19200bps; 38400bps; 115200bps.**  
 Frame format: **data bits:8bits, stop bits:1bit, No Parity, uncontrolled flow**

- Encoder for active mode**, encoder sends data to upper computer actively.  
 Data is 16 bits Hexadecimal ASCII code,  
 The format is YAB>±DATA↵, that is:

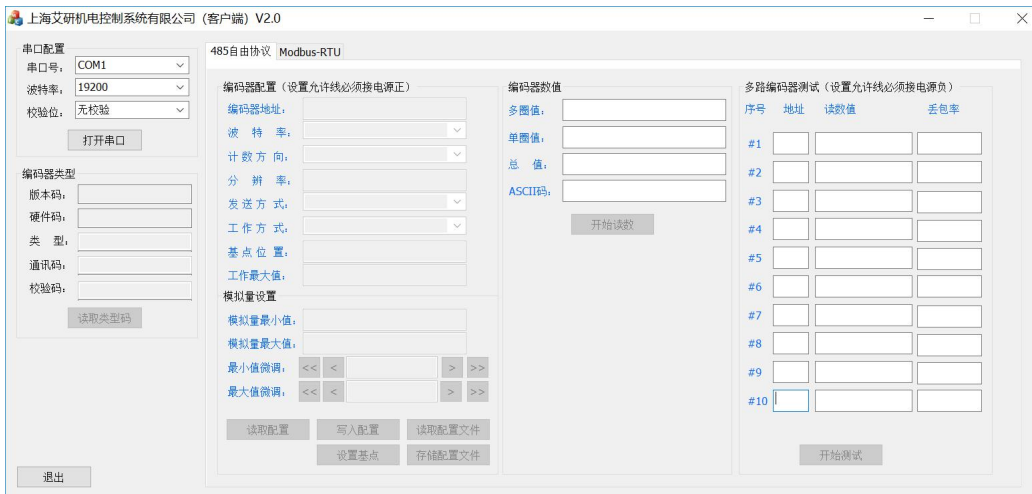
1	2	3	4	5	6	7	8	9	10	11	12	13	14	15	16
Y	Address	>	±	DATA											↵

“Y”: Leading letter, “>”: separator, “±”: sign bit.

DATA: ASCII format, 10bits, Consisting of 0 / 9, Range: -9,999,999,999 ~ +9,999,999,999. The last is carriage return.

- Encoder for passive mode**, question and answer mode.  
 The upper computer sends an inquiry to the encoder. Instruction is 4-bit hexadecimal ASCII code.  
 The format is: A+AB↵. AB is Allowed addresses range : 0~99.  
 The data format the encoder answers to the host computer is the same as the data format sent in active mode.

## 2. Client setup software (The parameters of the encoder require software instructions to set the encoder.)



Shanghai Ayan Industry system co., Ltd. provides RS485 client software for customers to debug and test directly.

If you need details, please refer to **C\_2.0 edition V1&V2 series handbook for user**, or Contact directly our technical support +86-21-56322427.

## Mode of connection & Attention

Signal	VCC	0V	RS485 A	RS485 B	P-set	V output+	Set-Allow	V output-
Cable	Brown	White	Green	Yellow	Gray	Pink	Blue	Red
Seat	2	1	3	4	5	6	7	8

### 1. Wiring definition

1) P-set: External position line:

After a short contact with the VCC, the current position data is output to the base point position of the encoder. The base point value is 0 by default, but can be set to any value in the whole range by software.



Encoder end

2) Set-Allow Setting permissible line:

When connecting the working power supply VCC, baud rate is 19200 BP by default, function parameters can be set.

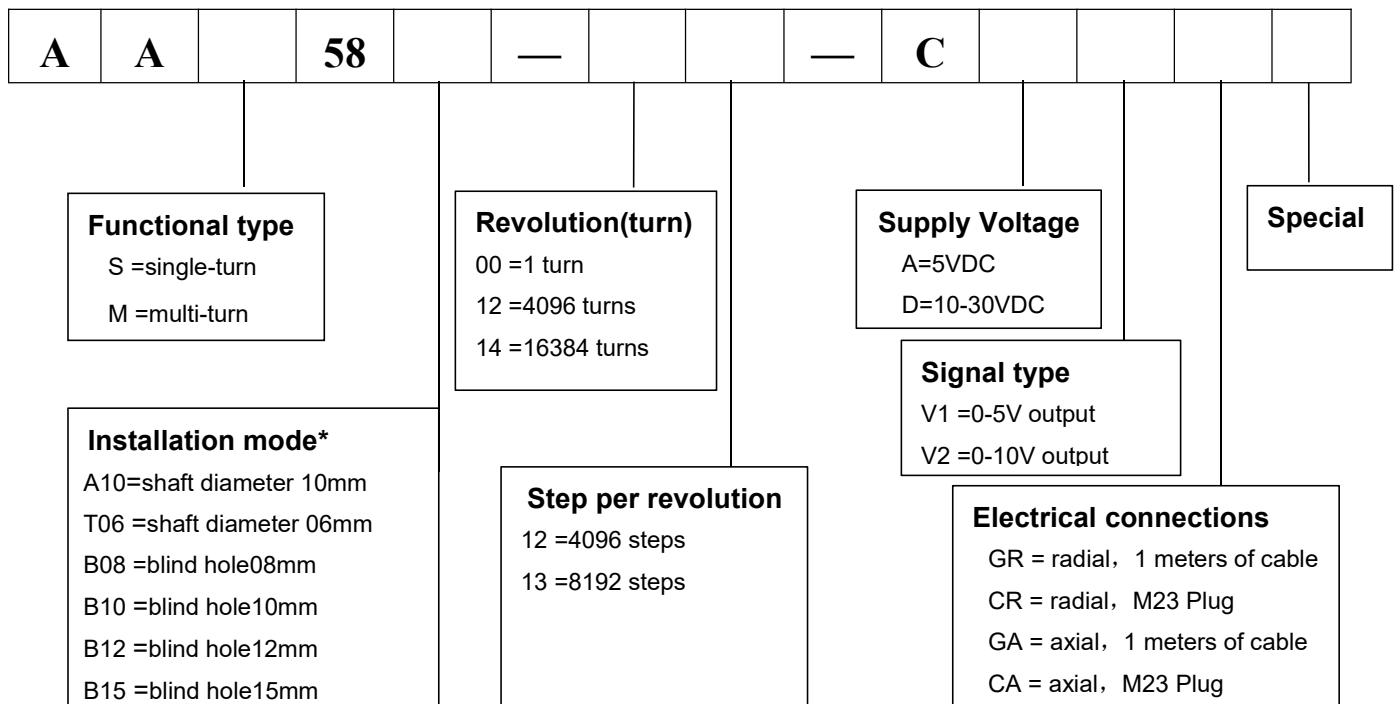
M23 Plug( 12pin )

3) Shielding Line (Shield) default suspension.

### 2. Attentions

- Communication rate and transmission distance are a pair of contradictions. The higher the rate, the closer the transmission distance is, but the more stable it is, and vice versa.
- When the external electromagnetic interference is strong, the external bit line needs to connect the VCC, to the encoder but after the end of the position, it is suggested that the encoder should be forced to connect with 0V so as to prevent the encoder from suddenly returning to zero because of the external interference.
- When external electromagnetic interference is strong, it is best to use double shield cable for the extension line of encoder.
- When there is a motor in the system, the encoder power supply needs to be isolated from other power sources, and the encoder cable and power cable need to be wired separately.
- When there is a motor in the system, the encoder power supply needs to be isolated from other power sources, and the encoder cable and power cable need to be wired separately.

## Selection data



\* A = Clamping synchronous flange, T = Synchronous flange, B = blind hole

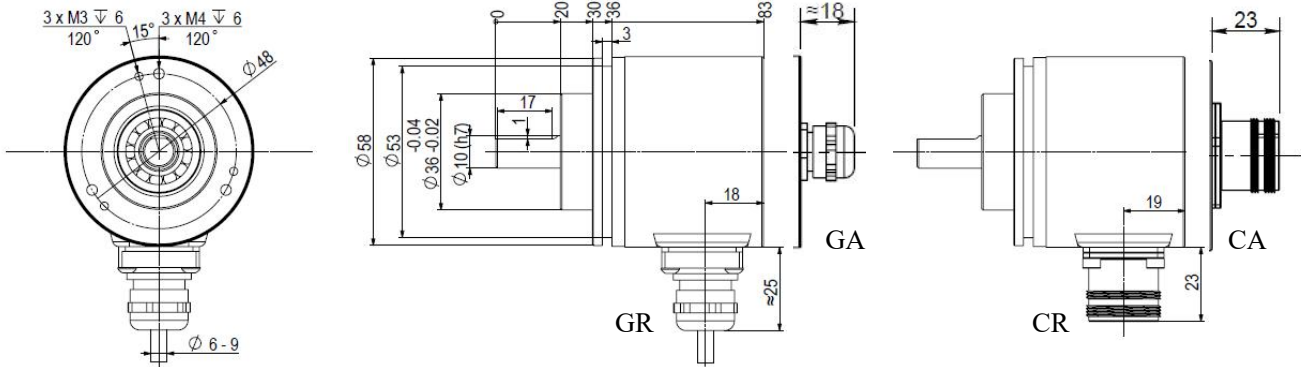
# Absolute encoder

# 0-5V、0-10V output

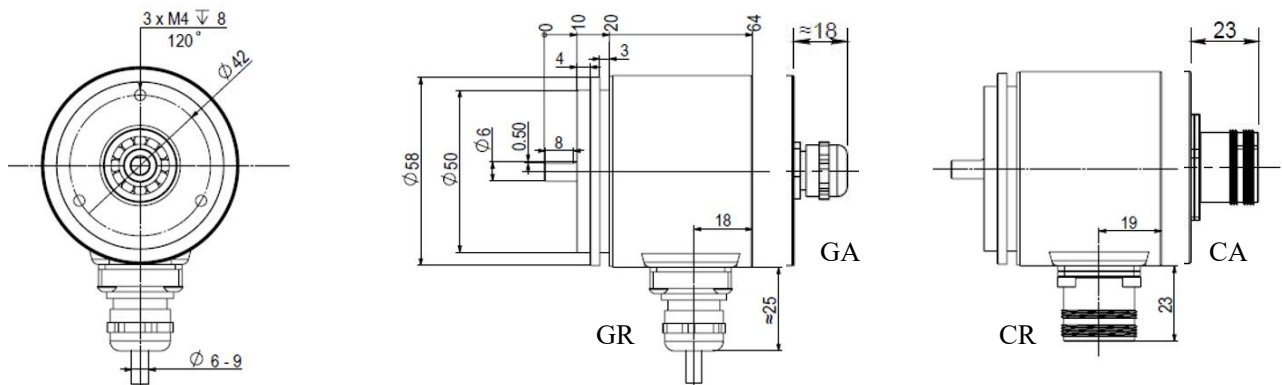
## Mechanical dimension

Unit: mm

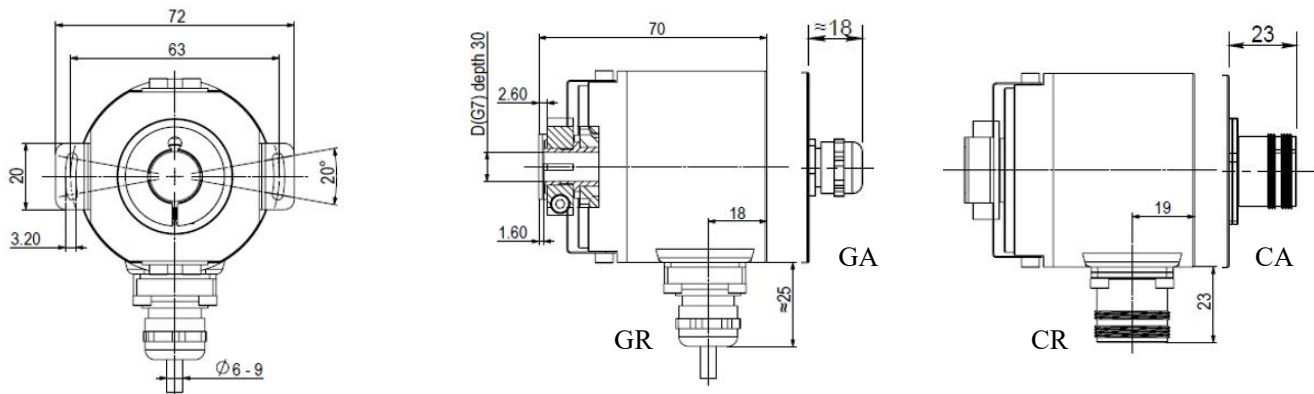
Clamping synchronous flange (58A10)	Cable output	M23 plug output
-------------------------------------	--------------	-----------------



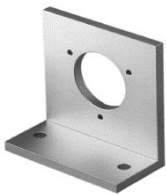


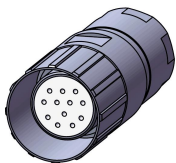
Synchronous flange (58T06)	Cable output	M23 plug output
----------------------------	--------------	-----------------



Blind hole (58B) --	Cable output	M23 plug output
---------------------	--------------	-----------------



## Accessories (Please refer to the attached information for more information)

Mounting brackets	Stainless steel couplings	Spring steel couplings	M23 plug
			
<b>MODEL</b> AZJ80	AL4A-B	AL3B	C12C
<b>Apply to</b> 58A	58A&58T	58A&58T	M23 plug

