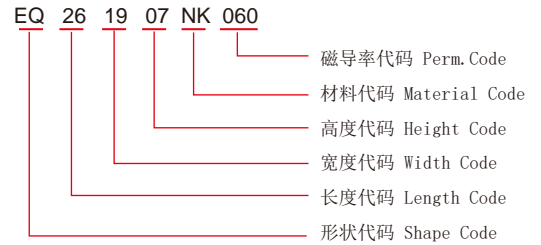
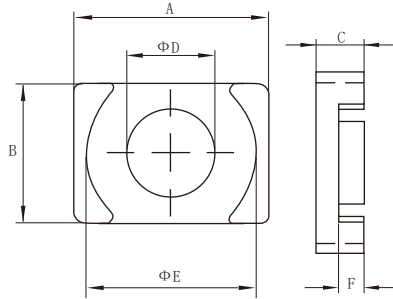


# EQ型磁粉心

## EQ Cores

### EQ形磁粉心命名 EQ-Core Identification



型号Type	尺寸 Dimension (mm)						
	A	B	C	D	E	F	G
EQ211405	20.5±0.3	14.0±0.2	5.0±0.2	8.8±0.2	18.0±0.3	2.6±0.3	12.8min
EQ211410	20.5±0.3	14.0±0.2	10.1±0.2	8.8±0.2	18.0±0.3	7.7±0.3	12.8min
EQ261907	26.5±0.4	19.0±0.3	7.0±0.2	12.0±0.2	22.6±0.3	3.7±0.3	14.9min
EQ261912	26.5±0.4	19.0±0.3	12.4±0.2	12.0±0.2	22.6±0.3	9.1±0.3	14.9min
EQ302208	30.5±0.4	22.0±0.3	8.0±0.2	13.5±0.2	26.0±0.4	4.1±0.3	18.9min
EQ302210	30.5±0.4	22.0±0.3	10.2±0.2	13.5±0.2	26.0±0.4	6.3±0.3	18.9min
EQ322208	32.0±0.5	22.0±0.4	8.0±0.2	13.5±0.2	27.6±0.4	4.3±0.3	21.0min
EQ322217	32.0±0.5	22.0±0.4	17.2±0.2	13.5±0.2	27.6±0.4	13.5±0.3	21.0min
EQ362609	36.0±0.5	26.0±0.4	9.0±0.3	14.4±0.3	32.0±0.4	5.0±0.3	21.9min
EQ362617	36.0±0.5	26.0±0.4	17.4±0.3	14.4±0.3	32.0±0.4	13.4±0.3	21.9min
EQ422810	41.5±0.7	28.0±0.4	10.0±0.3	14.9±0.3	36.5±0.5	5.5±0.3	26.8min
EQ422820	41.5±0.7	28.0±0.4	19.9±0.3	14.9±0.3	36.5±0.5	15.4±0.3	26.8min
EQ503213	50.0±0.7	32.0±0.4	13.0±0.4	20.0±0.3	44.0±0.5	7.5±0.3	32.3min
EQ503225	50.0±0.7	32.0±0.4	25.0±0.4	20.0±0.3	44.0±0.5	19.5±0.4	32.3min

### EQ形磁心电感因数及有效参数 AL Value & Effective Parameters of EQ-Cores

型号Type	Le (mm)	Ae (mm <sup>2</sup> )	Ve (mm <sup>2</sup> )	AL (nH/N <sup>2</sup> )		
				26	40	60
EQ211405	32.8	60.8	1994	60	93	140
EQ211410	53.2	60.8	3235	37	57	86
EQ261907	42.3	119.8	5068	92	142	213
EQ261912	63.9	119.8	7655	61	94	141
EQ302208	50.9	143.1	7290	92	142	212
EQ302210	58.9	143.1	8429	80	122	183
EQ322208	51.1	152.3	7783	97	150	225
EQ322217	87.9	152.3	13387	56	87	130
EQ362609	61.1	180.8	11047	96	149	223
EQ362617	94.7	180.8	17122	62	96	144
EQ422810	75.6	199.7	15097	86	133	199
EQ422820	115.2	199.7	23005	57	87	131
EQ503213	85.4	314.1	26824	120	185	277
EQ503225	133.4	314.1	41901	77	118	178

注：对于相同A和B尺寸的磁心，上表中只列出了当前模具可以制作的两种不同高度的磁心，我们可以根据客户需求，提供任何介于两种高度尺寸之间的磁心。

Note: Besides the cores with the same A & B dimensions and two different C dimensions in the above table which tools are available, we also can provide the cores with the C dimension in between the two values according the the customer request.