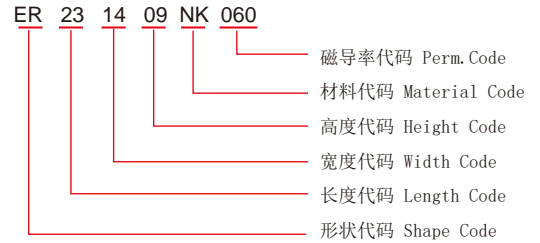
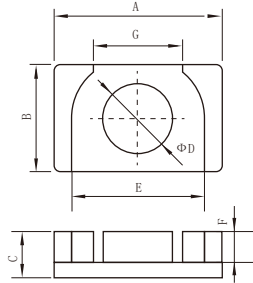


ER型磁粉心

ER Cores

ER型磁粉心命名 ER-Core Identification

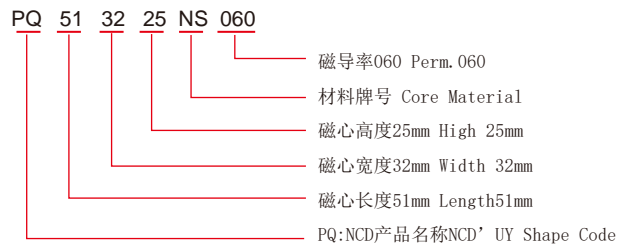
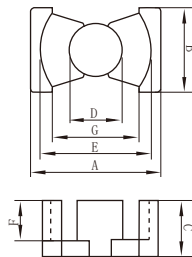


型号Type	尺寸 Dimension (mm)						
	A	B	C	D	E	F	G
ER231409	23.3±0.3	13.9±0.2	8.7±0.2	9.0±0.2	19.4±0.3	6.2±0.2	15.1±0.3
ER272307	26.4±0.4	22.6±0.3	6.7±0.2	12.4±0.2	22.4±0.3	3.55±0.3	15.3±0.3
ER302008	30.0±0.4	20.0±0.3	7.5±0.2	12.0±0.2	25.6±0.3	4.2±0.3	15.6±0.3
ER302012	30.0±0.4	20.0±0.3	11.8±0.2	12.0±0.2	25.6±0.3	8.5±0.3	15.6±0.3

ER型磁心电感因数及有效参数 AL Value & Effective Parameters of ER-Cores

型号Type	Le (mm)	Ae (mm ²)	Ve (mm ³)	AL (nH/N ²)		
				26	40	60
ER231409	49.95	63.62	3463	42	64	96
ER272307	44.40	120.76	5203	89	137	205
ER302008	49.73	113.10	6393	74	114	171
ER302012	66.65	113.10	8514	55	85	128

PQ型磁粉心命名 PQ-Core Identification



型号Type	尺寸 Dimension (mm)						
	A	B	C	D	E	F	G
PQ513225	51.0±0.7	32.0±0.5	25.0±0.4	20.1±0.3	44.0±0.5	18.0±0.4	34.0min

PQ型磁粉心电感因数及有效参数 AL Value & Effective Parameters of PQ-Cores

型号Type	Le (mm)	Ae (mm ²)	Ve (mm ³)	AL (nH/N ²)		
				26	40	60
PQ513225	117.29	264.05	30970	73	113	170