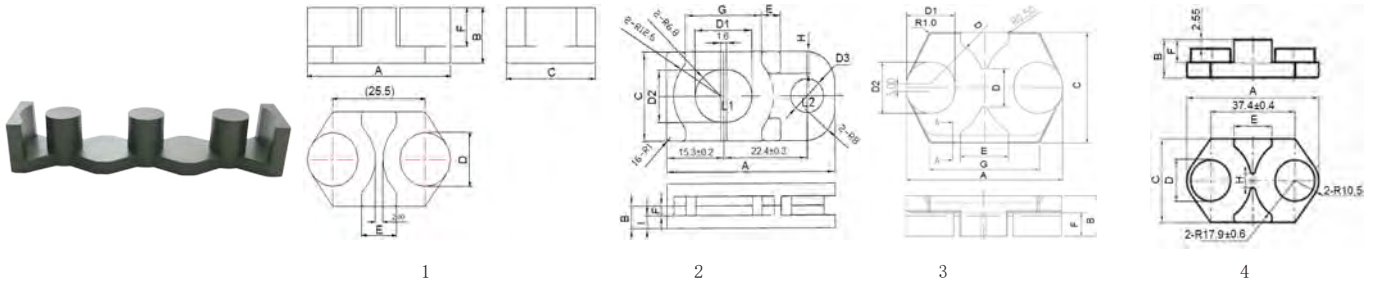


铁氧体磁心

Ferrite Core

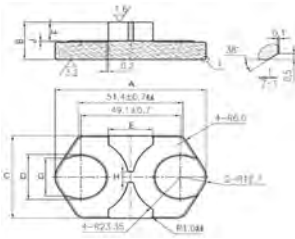
特殊形状磁心 Special Shape Cores



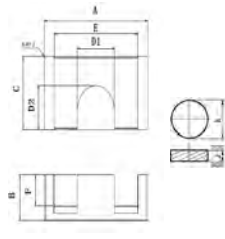
品名 Part No.	图号 Fig	尺寸Dimensions(mm)										
		A	B	C	D	E	F	G	H	J	K	I
EC38.3/18.5/15.6	16	38.3±0.5	15.6±0.15	18.5±0.5	13.5±0.25(D1) 11.0±0.2(D2)	9.2±0.2	8.85±0.15	3.8Ref				6.75±0.2
EC39.5/24.4/15.1	1	39.5±0.5	15.1±0.2	24.4±0.4	14.0 ^{+0.15} _{-0.25}	9.5±0.3	10.6±0.25					
EC45.1/23/5.95	2	45.1±0.6	5.95±0.25	23.0±0.35	15.2±0.2 (D1) 13.6±0.2 (D2) 8.8±0.15 (D3)	5.1±0.15	2.5±0.2	20.4±0.3	5.7±0.15			3.45±0.15
EC45.7/28.5/14	1	45.7±0.5	14.0±0.15	28.5±0.4	15.0±0.3	11.5±0.2	5.0±0.15					
EC58/45/16.5	3	58.0 ^{+1.0} _{-0.5}	16.5±0.2	45.0±0.7	15.5±0.4 (D) 18.0±0.4 (D1) 21.0±0.4 (D2)	18.0±0.6	9.5±0.3	41.0±0.8	6.0Ref	4.0±0.03	17.4±0.25	
EC58.4/35.8/26.4G	4	58.4±0.6	13.2±0.2	35.8 ^{+0.4} _{-0.6}	17.4±0.3	16.0±0.3	6.9 ^{+0.3} _{-0.2}					
EC60.6/40/15.2	15	60.6±0.9	15.2±0.1	40.0±0.5	18.6±0.25	15.0±0.25	8.6±0.2					
EC74/48.5/22.95	5	74.4±0.9	22.95±0.2	48.5±0.5	25.3±0.3	22.0±0.3	11.85±0.5	22.3±0.5	6.2±0.3	0.5±0.1		
EC86/50/22.5	12	86.0±1.2(A1) 66.0±0.8(A2) 60.0±0.8(A3)	22.5±0.15(B1) 19.5±0.3(B2)	50.0±0.6(C1) 44.0±0.5(C2) 20.0±0.3(C3)	30.0±0.4(D1) 18.0±0.3(D2)	24.0±0.4	12.5±0.25	8.0±0.2				
EC93.5/26/19	13	93.5±1.0	19.0±0.15	26.0±0.4	31.3±0.4(D1) 16.0±0.3(D2)	41.3±0.5	9.6±0.25	35.3±0.5	9.0 Ref			
EQX70.6/29/15.25	21	70.6±1.0	15.25±0.2	29.0±0.5	16.85±0.3(D1) 14.3±0.3(D2)	64.6±1.0(E1) 18.25±0.6(E2)	9.25±0.2	58.0±1.0				
EX78/40/25	6	78.0±0.5	25.0±0.3	40.0±0.4	28.0±0.3(D1) 24.0±0.3(D2)	63.0±0.5	17.0±0.3					
PQX63/18/20.5	7	63.0±0.8	20.5-0.5	18.0±0.35	12.0±0.2	58.2±0.8	5.0±0.25	50.4±0.8				
PQX79/18/20.5	7	79.0±1.2	20.5-0.5	18.0±0.35	13.5±0.2	73.5±1.0	5.5±0.3	67.0±1.0				

铁氧体磁心 Ferrite Core

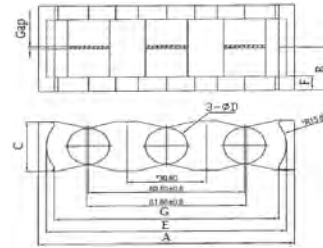
特殊形状磁心 Special Shape Cores



5



6



7



8

品名 Part No.	图号 Fig	磁心参数 Core parameters				重量 Weight(g/pc)	电感因数 AL		
		C1(mm ⁻¹)	le(mm)	Ae(mm ²)	Ve(mm ³)		LP3/LP3A	LP9/LP10	LP5
EC38.3/18.5/15.6	16	0.537	66	122.9	8110	71			
EC39.5/24.4/15.1	1			151.7		82		6000	
EC45.1/23/5.95	2	0.352	37.31	105.94	3953	48			
EC45.7/28.5/14	1			176.7		91			
EC58/45/16.5	3			308		115		14000	
EC58.4/35.8/26.4G	4			237.7		175		10000	
EC60.6/40/15.2	15			435.3		194			
EC74/48.5/22.95	5			263.6				12000	
EC86/50/22.5	12	0.215	105	488	51267			16000	
EC93.5/26/19	13	0.254	113.15	445.76	50438				
EQX70.6/29/15.25	21			197					
EX78/40/25	6	0.219	134.4	614.8	82629	405		13000	
PQX63/18/20.5	7			113		120		5600	
PQX79/18/20.5	7			143		150		6100	

注: 电感因数AL value

 单位Unit:nH/N²

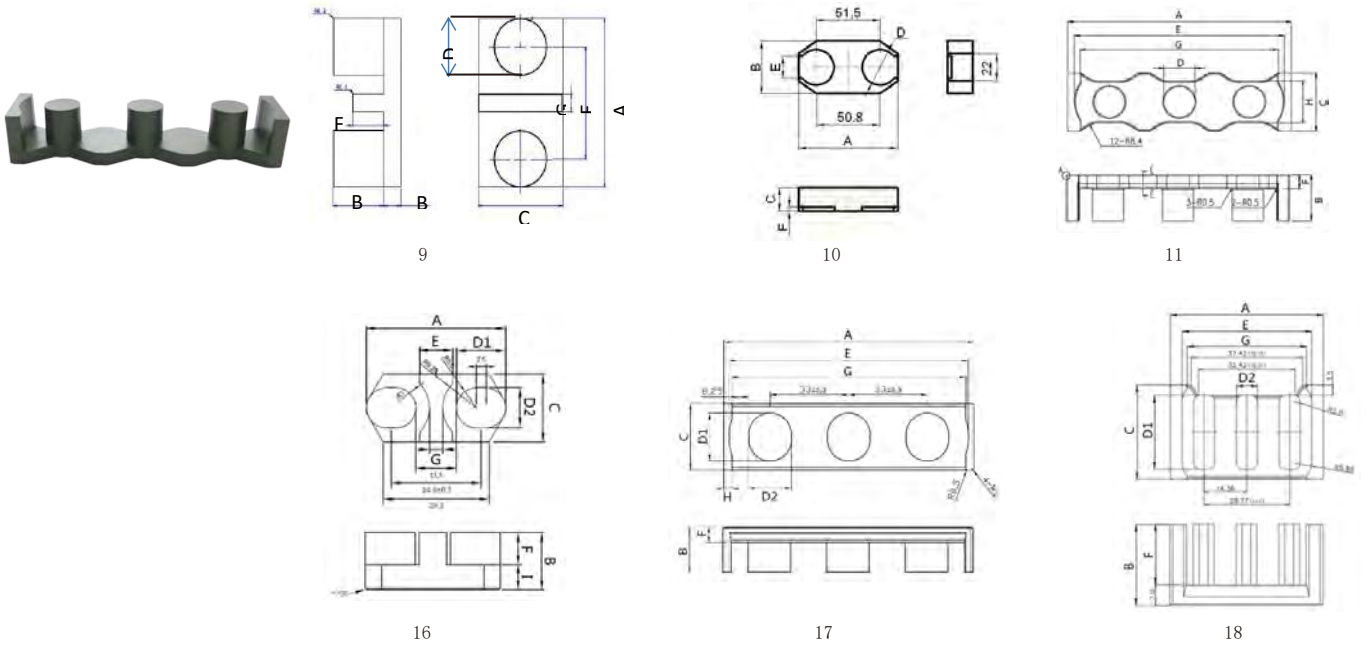
测试条件Measuring conditions:10kHz, 0.1V, 25°C

公差Tolerance:±25%

铁氧体磁心

Ferrite Core

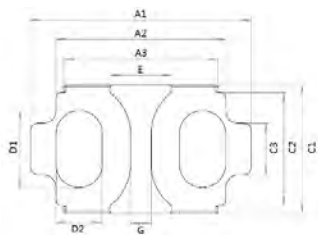
特殊形状磁心 Special Shape Cores



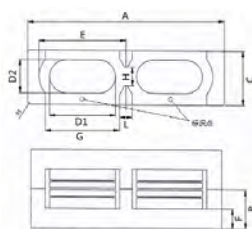
品名 Part No.	图号 Fig	尺寸Dimensions(mm)							
		A	B	C	D	E	F	G	H
PQX80/18/15.5	7	79.4±1.0	15.5±0.2	18.0±0.4	12.0±0.3	74.4±1.0	5.0±0.3	69.4±1.0	
PQX83/26/20.5	7	83.0±1.2	20.5-0.5	26.0±0.4	14.4±0.2	76.5±1.0	5.35±0.3	71.5±1.5	
PQX83B/26/21.5	18	83.0±1.2	21.5+0/-0.5	26.0±0.4	14.4±0.2	76.5±1.0	6.35±0.3	71.5±1.5	18.0±0.2
PQX99.3/22.5/20	7	99.3±1.2	20.0±0.2	22.5±0.5	16.3±0.3	93.0±1.2	6.3±0.3	86.8±1.2	
PQX107/28/20.5	7	107.0±1.5	20.5-0.5	28.0±0.4	14.9±0.25	100.5±1.5	5.65±0.3	95.0±1.4	
PQX107B/28/22	11	107.0±1.5	22.0+0/-0.4	28.0±0.4	14.9±0.25	100.5±1.5	6.65±0.3	95.0±1.4	20.0±0.2
YJ40/16/47.5	8	40.0±0.6	47.6±0.6	16.0±0.1	28.4+0.9	14.2±0.5		2.5	
YJ74/40/24	9	74.0±1.0	24.0±0.2(B1) 8.0±0.2(B2)	40.0±0.5	25.0±0.4	49.0REF	15.0±0.2	8.0±0.3	
YJ80/17/42.6	10	80.0±1.0	42.6±0.6	17.0±0.15	28.4+0.9	14.2±0.5	2.5		
YJ92/22/47.6	10	92.0±1.0	47.6±0.6	22.0±0.15	33.4+0.9	19.1±0.5	2.5		

铁氧体磁心 Ferrite Core

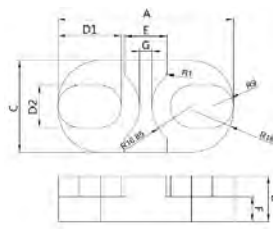
特殊形状磁心 Special Shape Cores



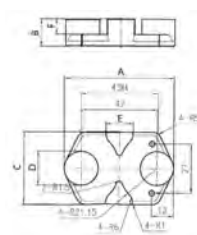
12



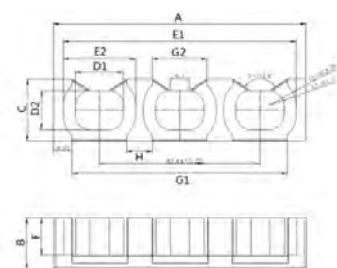
13



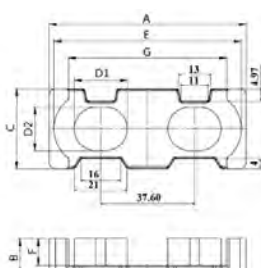
14



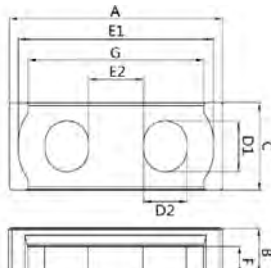
15



19



20



21

品名 Part No.	图号 Fig	磁心参数 Core parameters				重量 Weight(g/pc)	电感因数 AL		
		C1(mm ⁻¹)	le(mm)	Ae(mm ²)	Ve(mm ³)		LP3/LP3A	LP9/LP10	LP5
PQX80/18/15.5	7			113		108		6500	
PQX83/26/20.5	7			162.8		190		6700	
PQX83B/26/21.5	18			162.8		210		6700	
PQX99.3/22.5/20	7			208.6		225		8000	
PQX107/28/20.5	7			174.4		235		6000	
PQX107B/28/22	11			174.4		235		6000	
YJ40/16/47.5	8					120			
YJ74/40/24	9					258			
YJ80/17/42.6	10					240			
YJ92/22/47.6	10					405			

注: 电感因数AL value

单位Unit:nH/N²

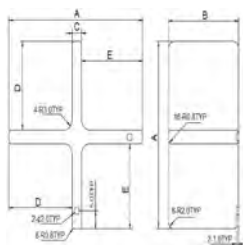
测试条件Measuring conditions:10kHz, 0.1V, 25°C

公差Tolerance: ±25%

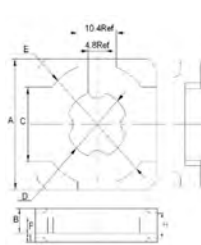
铁氧体磁心

Ferrite Core

特殊形状磁心 Special Shape Cores



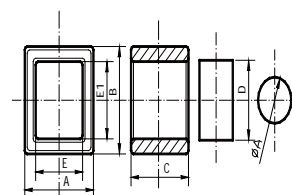
1



2



3

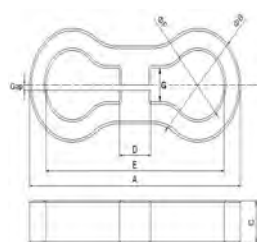


4

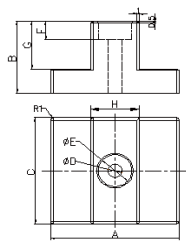
品名 Part No.	图号 Fig	尺寸Dimensions(mm)								
		A	B	C	D	E	F	G	H	
JH42.5	1	42.5±0.5	4.0±0.2	36.0±0.5						
JH48.6	1	48.6±0.5	3.6±0.2	44.0±0.5						
JH49.5	1	49.5±0.6	6.0±0.2	32.0±0.5						
JH51.5	1	52.0±0.6	3.6±0.2	25.0±0.5						
JH55	1	55.0±0.6	3.6±0.2	53.5±0.5						
QFI24	2	24.0±0.4	6.25±0.2	14.2min	12.0±0.3	22.6min	4.0±0.2			
QFI32	2	32.0±0.5	7.4±0.2	18.2min	16.0±0.4	29.6min	4.4±0.2			
QFI35	3	35.0±0.5	7.65±0.2	9.0±0.2	18.1±0.3	9.0±0.2	2.6±0.2	31.0REF		
S11	4	11.0±0.3	11.0±0.3	9.5±0.25	6.5±0.2	7.55±0.2(E1=E)				
S12	4	12.0±0.3	13.5±0.3	9.25±0.25	7.1±0.2	8.2±0.2(E) 9.7±0.2(E1)				
SK168	5	168.0±4.0	68.0±2.0	24.0±0.5	25.0±0.4	139.5min	40.0min	21.0min		
TR46	6	46.0±0.8	27.0±0.4	40.0±0.7	5.0±0.3	12.0±0.4	7.0±0.3	18.0±0.4	17.5±0.4	
FT27.4	7									
FT54.5	8	54.5±0.5	28.5±0.4	13.5±0.4	42.0±0.5	8.4±0.3	12.5±0.4			

铁氧体磁心 Ferrite Core

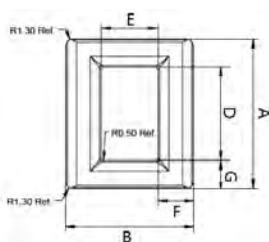
特殊形状磁心 Special Shape Cores



5



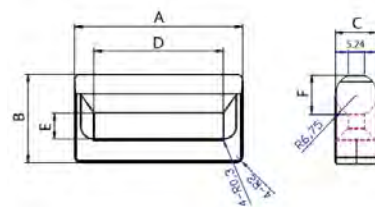
6



7



8



品名 Part No.	图号 Fig	磁心参数 Core parameters				重量 Weight(g/pc)	电感因数 AL		
		C1(mm ⁻¹)	le(mm)	Ae(mm ²)	Ve(mm ³)		LP3/LP3A	LP9/LP10	LP5
JH42.5	1					60			
JH48.6	1					75			
JH49.5	1					93			
JH51.5	1					46			
JH55	1					103			
QFI24	2	0.278	29.2	105	3066	15	6200		
QFI32	2	0.217	41.6	192	7987	48	9500		
QFI35	3		258			45			
S11	4					1.9			
S12	4					5.1			
SK168	5	0.308	185	600	111000	625			
TR46	6					138			
FT27.4	7								
FT54.5	8	1.204	127.5	105.9	13506	60			

注: 电感因数AL value

 单位Unit:nH/N²

测试条件Measuring conditions:10kHz,0.1V,25°C

公差Tolerance:±25%