

Connect All Connect Dreams

FISE TECHNOLOGY 2020



PRODUCT MANUAL

Technology and service
provider to access
internet

KaiOS

SHENZHEN FISE TECHNOLOGY HOLDING CO.,LTD.



Address

1F-4F,No.6 Building&1F-7F,No.9 Building,Longfu Industrial Area,Huarong
Road,Tongsheng Community,Dalang Street,Longhua District,Shenzhen



Telephone

+86 0755 86599086



Websites

<http://www.fise.com.cn>



CONTENTS

About FISE

Profile

History

Achievements

Product Introduction

Series of Solutions to Mobile Communication

Series of Solutions to Customers in Alot

Product series of smart payment

Core Strengths

Map of Marketing

Partners

ABOUT FISE



▼ PROFILE

Shenzhen FISE Technology Holding CO., LTD. (hereinafter referred to as "FISE Technology"), founded in 2008, is a national high-tech company in China with nearly 1,000 employees. It commits to providing research and design and manufacturing services about hand-held mobile terminals, smart wearable devices, artificial intelligence technologies and other smart hard wares and electronics for global operators, Internet companies and customers of leading brands.

HISTORY

2008

Shenzhen FISE Technology Holding CO., LTD. was founded

2009

Established a strategic cooperation partnership with MEDIATEK

2010

Put forward nearly 100 solutions with a monthly sale of main boards up to 500K

2011-2013

FISE Technology was granted as national high-tech enterprise

2014

The monthly sale of mobile phone main boards reached 3KK and the company was known as "King of Feature Phone Solution"

2016

Promoted solutions of intelligent hardware in the industry of dressing and AI
Expanded reliable experiment centers, enhanced construction of quality management system
Won "the Most Honest Enterprise Award"

2017

FISE Technology was regarded as "Standard Enterprise for integration of informatization and industrialization"

Scored NO.2 in the industry by a comprehensive evaluation with its 4G smart watch solution

2018

Served as one of the first batch of ODM/OEM manufacturers authorized by KaiOS

Established a strategic cooperation partnership with Google

Recognized as "Enterprise Technology Center"

Recognized as "Intelligent Terminal Main Board Research and Development and Applied Engineering Technology Research Center"

Granted as "Enterprise of Contract Abiding and Trustworthy"

2019

Served as the first large-scale productions of KaiOS mobile phone solution provider in MTK platform

Established research center for new payment products and promoted new payment products based on QR technology and biological recognition technology





ACHIEVEMENTS

FISE Technology has won the recognition of customers of all walks of life by providing them superior solution with the sales of mobile phone main boards ranking as the top two in China.

PRODUCT INTRODUCTION

+

Product Introduction 01

SERIES OF SOLUTIONS TO MOBILE COMMUNICATION

Provide “One-stop” Mobile
Communication Core
Solution and OEM/ODM
service



KaiOS Mobile Phone

Android Smart Phone

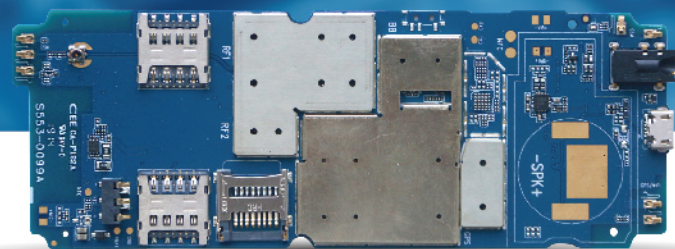


KAIOS MOBILE PHONE

The first large-scale productions of
KaiOS mobile phone in MTK
platform

Solutions of main board

MM3102



LCD
2.4"



SIM
Dual SIM Dual Standby



Camera
0.3MP (Front) and
2MP (Rear)



Memory
MCP(NAND+DDR2)
4GB+512MB



Battery
1400-1800mAh



Chipset
MT6731/MT6572

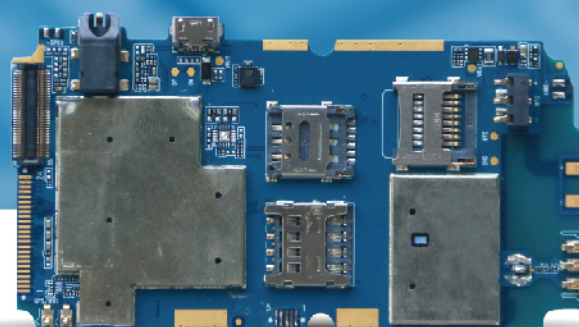


Band
2G: quad-band
3G: B1, B8;
4G: B1 B3 B5 B7 B8 B20



Others
FM/GPS/WIFI/BT
/NTC/NFC/SOS

MM7206



LCD
2.8"+1.77"



SIM
1Micro+1Nano+T



Camera
0.3MP(Front) and
2MP(Rear)



Memory
MCP(NAND+DDR2)
compatible EMMC+DDR2;
4GB+512MB



Battery
4D battery core,
support for customer's
battery



Chipset
MT6572

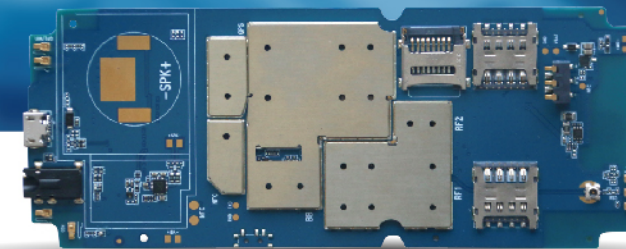


Band
2G: quad-band
3G: Band2/3/5/8



Others
FM/GPS/WIFI/BT/NTC
/SOS

MM3105



LCD
2.8"



SIM
Dual Micro+T card



Camera
0.3MP (Front) and
2MP (Rear)



Memory
MCP(NAND+DDR2)
512MB+256MB



Battery
1400-1800mAh



Chipset
MT6731



Band
2G: quad-band
3G: B1, B8;
4G: B1 B3 B5 B7 B8 B20



Others
FM/GPS/WIFI/BT/NTC
/NFC/SOS.

KAIOS MOBILE PHONE

Complete machine



M32422 *DETAIL PARAMETERS*

Red / White/ black, Color customization

Chipset: MTK 6572
 Band: GSM 850/900/1800/1900MHz
 WCDMA 850/900/2100
 Memory: Ram 512+ROM 4GB up to 32GB
 LCD: 2.31"
 Battery: 1200mAh
 Camera: 0.3MP
 SIM: Dual SIM Dual standby
 APPs: Whatsapp, Youtube, Facebook

M32843

*DETAIL
PARAMETERS*



Red / green / black, tricolour optional

Chipset: MT6572
 OS: KaiOS
 Band: GSM850/900/1800/1900MHz; WCDMA900/2100MHz
 Memory: 512MB RAM+4GB ROM
 LCD: 2.8" QVGA
 Camera: 0.3MP(Rear)
 Battery: 2000mAh
 Others: FM/BT/GPS/WiFi
 APPs: Facebook/WhatsApp/Youtube

M32421

DETAIL PARAMETERS

Red / blue / black, tricolour optional

Chipset: MTK 6572
 Band: GSM 850/900/1800/1900MHz
 WCDMA 850/900/2100MHz
 Memory: Ram 512MB+ROM 4GB TF up to 32GB
 LCD: 2.4"
 Battery: 1400mAh
 Camera: 0.3MP
 SIM: Dual SIM Dual Standby
 Weight (in gms): 105g
 Others:BT/GPS/WiFi/FM
 APPs: Whatsapp, Youtube,
 Facebook



M32433

DETAIL PARAMETERS

Red /Green / black, tricolour optional

Chipset: MTK 6572
 Band: GSM 850/900/1800/1900MHz WCDMA 900/2100MHz
 Memory: 512MB+4GB TF up to 16GB
 LCD: 2.4"
 Battery: 1400mAh
 Camera: 0.3MP
 SIM: Dual SIM Dual Standby
 Weight (in gms):105g
 Others:BT/GPS/WiFi/FM
 APPs: Whatsapp, Youtube, Facebook



M42421

DETAIL PARAMETERS

Red / blue / black, tricolour optional

Chipset:MT6731
 OS:KaiOS
 Frequency:GSM850/900/1800/1900MHz; WCDMA900/2100MHz
 LTE B1/3/7/20
 Screen:2.4" QVGA
 Memory:512MB RAM+4GB ROM
 Camera:0.3MP(Rear)
 Battery:1400mAh Li-ion
 Function:FM/BT/GPS/WiFi
 Built-in:Facebook/WhatsApp/Youtube...
 Accessories:Charger with cable/Earphone



M42433

DETAIL PARAMETERS

Red / Green / black, tricolour optional

Chipset:MT6731
 OS:KaiOS
 Frequency:GSM850/900/1800/1900MHz;
 WCDMA900/2100MHz LTE B1/3/7/20
 Screen:2.4" QVGA
 Memory:512MB RAM+4GB ROM
 Camera:0.3MP(Rear)
 Battery:1400mAh Li-ion
 Function:FM/BT/GPS/WiFi
 Built-in:Facebook/WhatsApp/Youtube...
 Accessories:Charger with cable/Earphone



M42843

DETAIL PARAMETERS

Red / blue / black, tricolour optional

Chipset: MTK 6731
 Band: GSM 850/900/1800/1900MHz
 WCDMA 900/2100MHz
 LTE B1/3/7/20
 Memory: 512MB+4GB TF up to 16GB
 LCD: 2.8"
 Battery: 2000mAh
 Camera: 0.3MP
 SIM: Dual SIM Dual Standby
 Weight (in gms):120g
 Others:BT/GPS/WiFi/FM
 APPs: Whatsapp, Youtube, Facebook

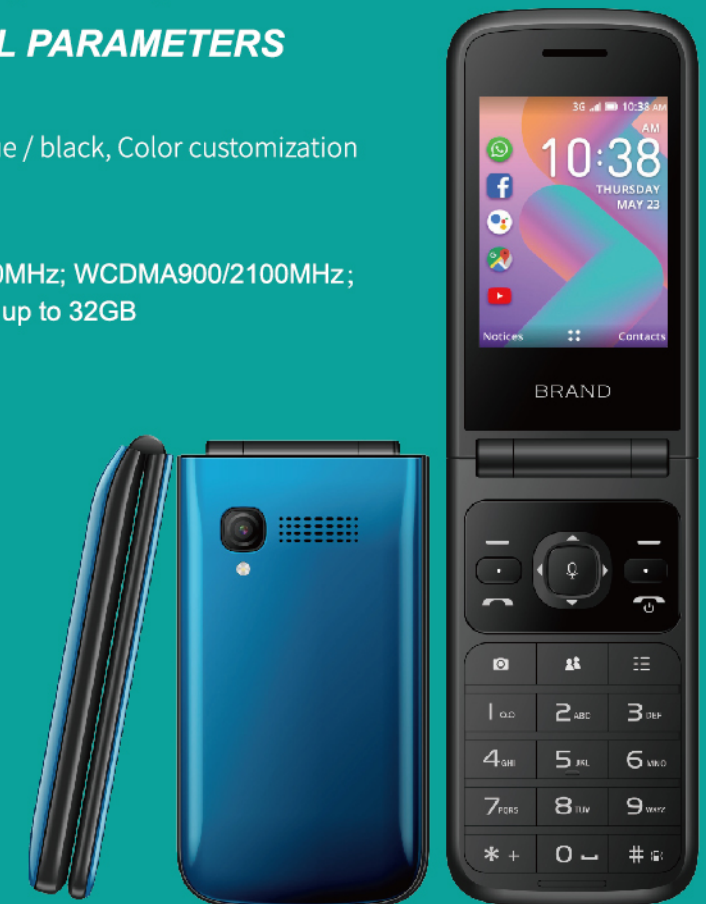


M32842

DETAIL PARAMETERS

Red / blue / black, Color customization

Chipset: MTK 6572
 Band: GSM850/900/1800/1900MHz; WCDMA900/2100MHz;
 Memory: Ram 512+ROM 4GB up to 32GB
 LCD: 2.8"
 Battery: 1800mAh
 Camera: 0.3MP
 SIM: Dual SIM Dual Standby
 Weight (in gms):125g
 APPs: Whatsapp, Youtube, Facebook



M32424

DETAIL PARAMETERS

Red / blue / black, Color customization

Chipset: MTK 6572
 Band: GSM 850/900/1800/1900MHz
 WCDMA 850/1900/or 900/2100
 Memory: Ram 512+ROM 4GB up to 32GB
 LCD: 2.31"
 Battery: 1400mAh
 Camera: 0.3MP
 SIM: Single SIM Dual standby
 APPs: Whatsapp, Youtube, Facebook



M42424

DETAIL PARAMETERS

Red / blue / black, Color customization

Chipset: MTK 6731
 Band: GSM 850/900/1800/1900MHz
 WCDMA Band5(850) / Band4(1700) / Band2(1900) OR
 Band1(2100)/Band8(900)
 LTE FDD: B1/3/7/20/28AB AND B2/4/5/7/12/17/28AB/66
 Memory: Ram 512+ROM 4GB up to 32GB
 LCD: 2.4"
 Battery: 1400mAh
 Camera: 0.3MP
 SIM: Dual SIM Dual standby
 APPs: Whatsapp, Youtube, Facebook



ANDROID SMART PHONE

Complete machine



M46040 *DETAIL PARAMETERS*

Gold / blue / green, tricolour optional

Chipset:MT6761
 OS:Android 10.0
 Frequency:GSM850/900/1800/1900MHz; WCDMA900/2100MHz LTE B1/3/7/20
 Screen:5.99" 18:9 FW+ IPS G+F+F
 Memory:2GB RAM+16GB ROM EMCP
 Camera:2MP FF(F)+8MP AF(13MP)/0.3MP(R)
 Battery:4000mAh Polymer
 Sensor:G/P/L/FP(NFC be optional)
 Size:76.7*160.6*9.9mm
 Accessories:Charger/USB Cable/Earphone

M46235

*DETAIL
PARAMETERS*



Red / green / black, tricolour optional

Chipset: MTK 6761
 OS: Android 10.0
 Band: GSM 850/900/1800/1900MHz WCDMA 850/900/1800/2100MHz
 FDD B1/3/7/20 or B2/4/7/28
 Memory: 2GB+16GB
 LCD: 6.26" 2.5D HD+ 19:9 720*1560 Pixels
 Battery: 4000mAh
 Camera: 2MP+8MP(+0.3MP)(5MP+13MP Max)
 SIM: Dual SIM Dual Standby
 Connectivity: GPS/BT/WiFi 5.0 /FM/Fingerprint
 Others: G/P/L sensor, Wi-Fi 802.11a/b/g/n

Product Introduction 02

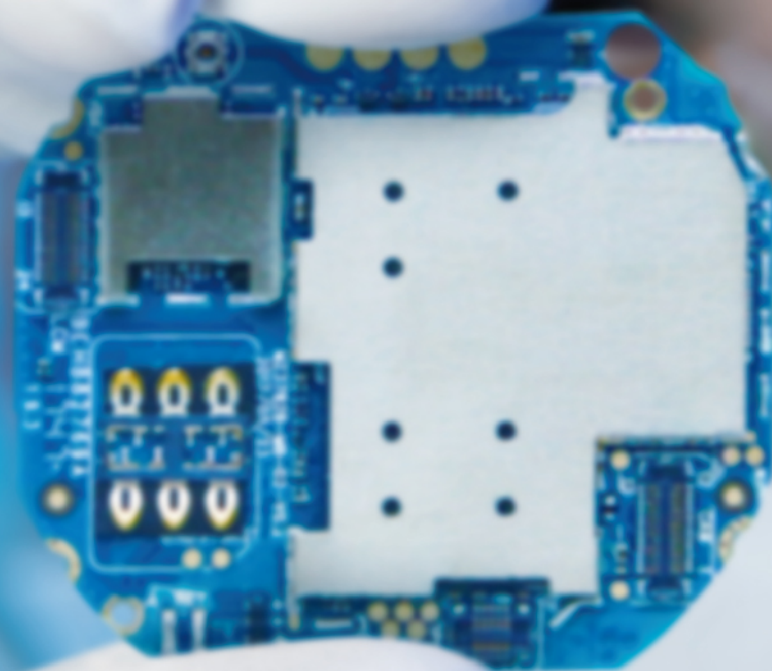
SERIES OF SOLUTIONS TO CUSTOMERS IN AIOT

[Products of Smart Dressing](#)[AI Products](#)

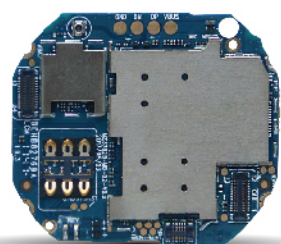
- Smart Watch for Kids
- Smart Watch for Adults
- Smart Watch for the Elderly
- Smart Bicycle
- Smart Loudspeaker Box



PRODUCTS OF SMART DRESSING



Smart Watch for Kids



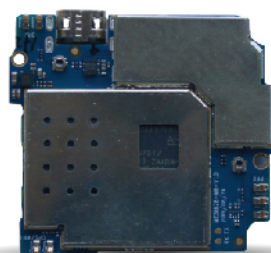
Technical support to all kinds of networks

Alarm setting to avoid loss

Video call, WeChat and multiple accurate location by GPS/WIFI/base station

Smart voice function

Smart Watch for Adults



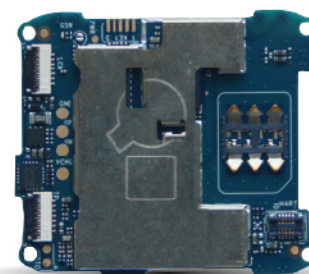
Total motion algorithm

Data collection of all types of sports

Smart voice function for heart rate, blood pressure and blood oxygen monitoring



Smart Watch for the Elderly



Heart rate warning

Blood pressure measurement: read blood pressure data by PPG pulse wave

Smart health alerts

Two-way communication

AI real-time location: BDS / GPS/ LBS/ AGPS/WIFI

A click SOS for help

AI PRODUCTS

Provide professional solutions of hardware products such as smart loudspeaker Box and robot and tailored

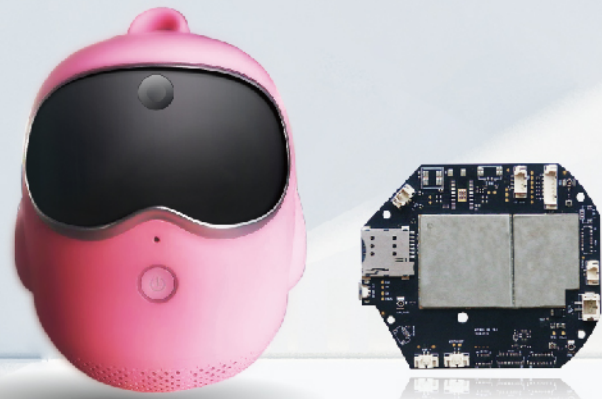
■ Smart Loudspeaker Box

Technical support to all kinds of networks

Plenty humanized smart talks

Broadcast all sorts of resources

High-quality acoustic effect



■ Smart Bicycle

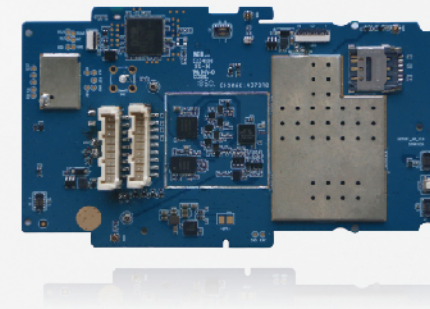
Technical support to all kinds of networks

Support Amazon Alexa (Amazon voice assistant)

Advocate security, entertainment, social contact and health

Smart intercom system

Back outward control ports of various kind



Product Introduction 03

PRODUCT SERIES OF SMART PAYMENT

QR Series

BR Series

SP Series



QR SERIES

Products based on QR code payment:

QR01/QR02

Sound For Payment



QR03

Fast Scanning, Fast Recognition



BR SERIES

Products based on the biological recognition technology

BR01

Face Payment Convenient & Fast



BR02

Horizontal Screen Display, Easy Advertising



BR03

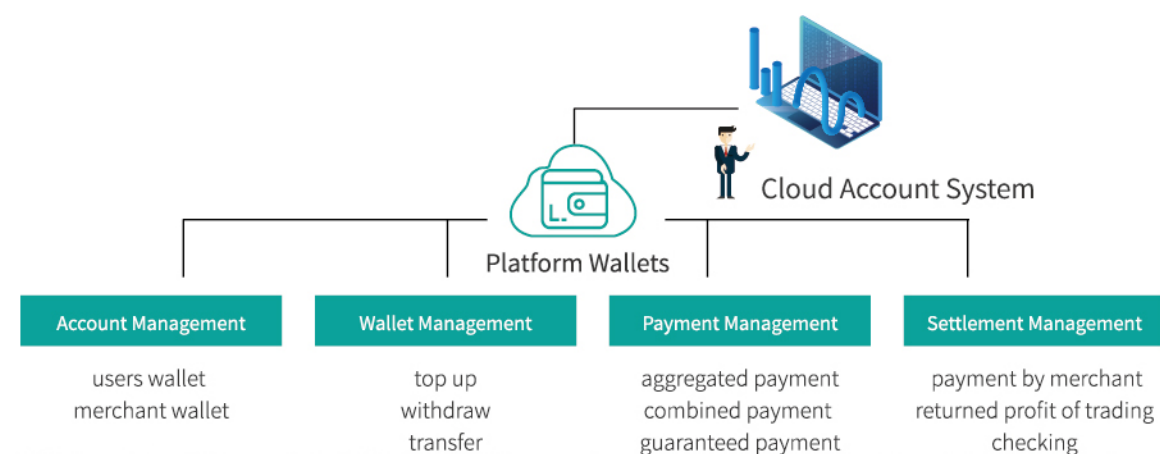
New Upgrade, Double Screen Operation



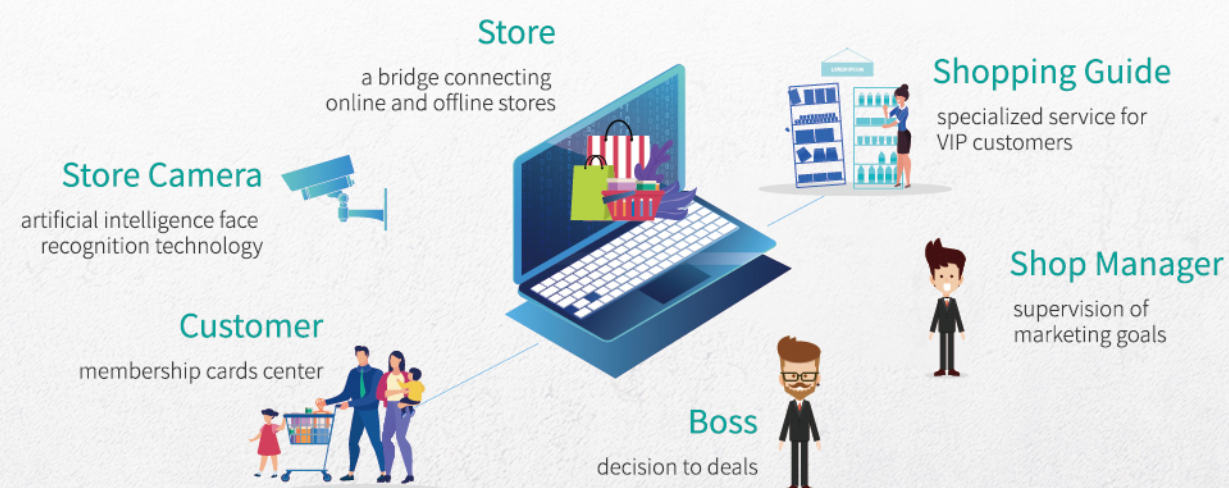
SP SERIES

Products and the corresponding added-value products based on the platform of applications

Cloud Payment Management



Other Service Platforms



CORE STRENGTHS +

■ Focus on technology for over 10 years

FISE Technology, focused on the area of mobile communication for over 10 years, is the strategic cooperation partner of MTK and Google and the first batch of the ODM/OEM manufacturer authorized by KaiOS.

■ Large-scale production

Establish a production base with a monthly capacity of 3 million main board products and over 99.5% production yield

■ Skilled researchers of technology

Researchers occupy 60% of the company staff with over 5 years experience

■ Solid foundation for research and development

Guangdong Intelligent Terminal Main Board Research and Development and Applied Engineering Technology Research Center

Enterprise Technology Center of Longhua District of Shenzhen

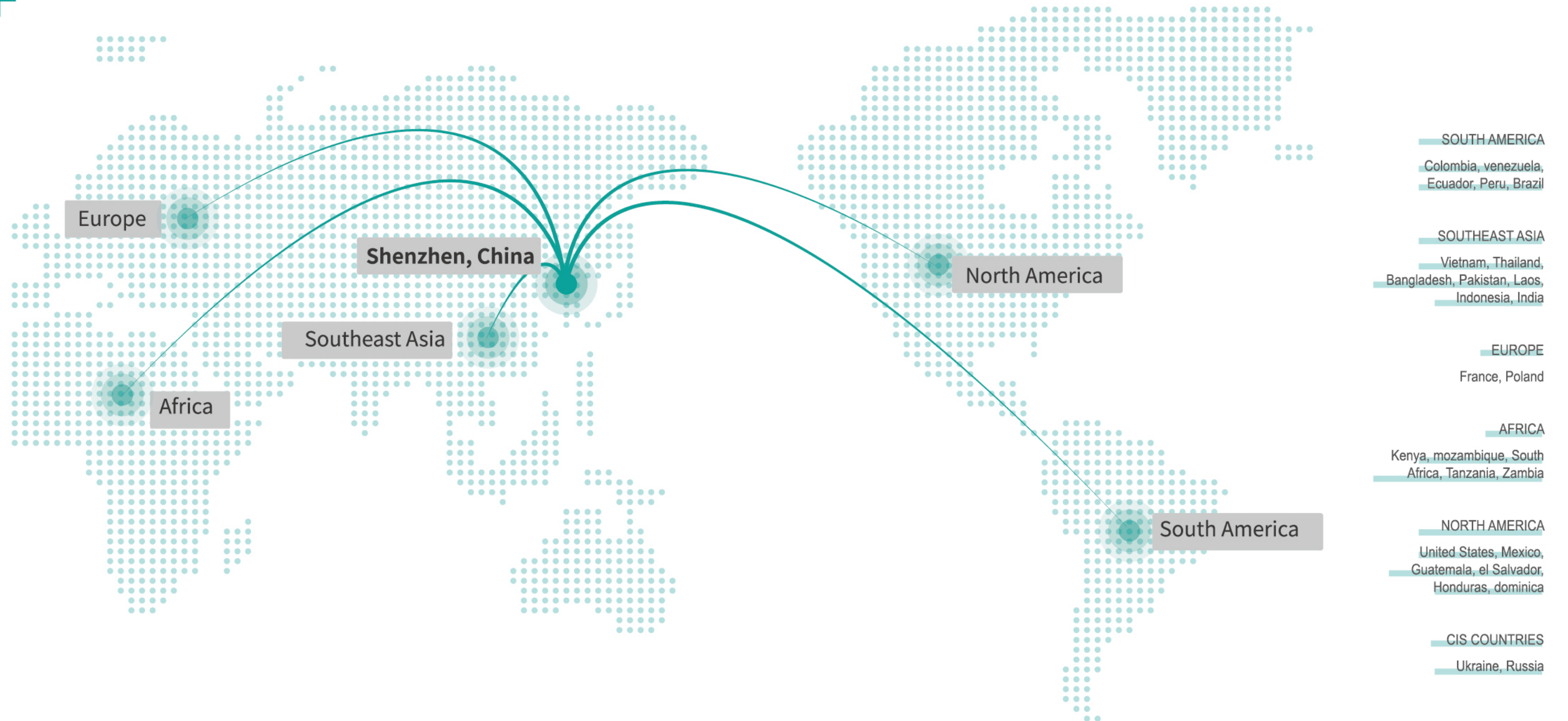
Obtain over 200 patents, software copyrights and layout designs of integrated circuits

■ Well-developed service system

Provide services of before, during and after sale for customers in 24 hours

MAP OF MARKETING +

FISE Technology has established a deep cooperation relationship with some major operators and mainstream brands of technology with customers around the global.



PARTNERS

+

KaiOS

MEDIATEK

Google



telcel

tigo



vodacom

Safaricom



Hãy nói theo cách của bạn

unitel

myPhone

LOGICOM

AZUMI
MOBILE

tmcell

SYMPHONY

LAVA
MOBILE PHONE



CHINOE 中诺

超盟金服
CHAOMENG FINANCIAL