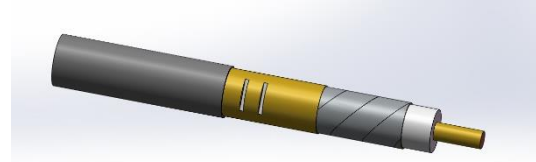


RDL 50-7/8RM – High Fire resistant LSOH Jacket M5678Z

Description

Inner Conductor:	Copper tube	9.3 mm
Insulation:	Physically foamed PE	22.5 mm
Fire barrier:	Mica tape	
Outer Conductor:	Overlapping copper foil with slots	
Jacket:	Low smoke zero halogen compound	27.0 mm
Ink Marking:	ACOME RADIACELL COAX LSOH HFR RDL 50-7/8RM M5678 LOT X lot N° (+ Metric length)	



Electrical Characteristics

Impedance:		50 ± 2 Ω
	380~450MHz	≤ 1.38
VSWR:	698~769MHz	≤ 1.38
	806~960MHz	≤ 1.38
Capacitance:		76 pF/m
Velocity:	Typical	88%
Cut Off Frequency:		5 GHz
DC Breakdown Voltage:		10 kV
Insulation Resistance:		≥5000 MΩ.km

Frequency (MHz)	Attenuation (dB/km) @ 20°C Max.	Coupling Loss (50%) @ 20°C dB	Coupling Loss (95%) @ 20°C dB
100	11.7	72	82
150	15.6	72	82
400	28.1	74	80
450	28.6	74	80
470	29.2	74	80
900	45.7	72	78

Mechanical Characteristics

Bending Radius:	300 mm
Tensile force:	2300 N
Weight:	456 kg/km

Environmental Characteristics

Temperature Range:	Operating	-30°C / +80°C
	Installation	-10°C / +60°C
	Storage	-30°C / +80°C
pH:	IEC 60754-2	≥4.3
Conductivity:	IEC 60754-2	≤10 μs/mm
Acid gas emission test:	IEC 60754-1	≤5.0 mg/g
Smoking density test (Min. photic rate)	IEC 61034-2	≥60%
Flame retardant:	IEC 60332-1, IEC 60332-3-24	
CPR:	B2ca for Preliminary	