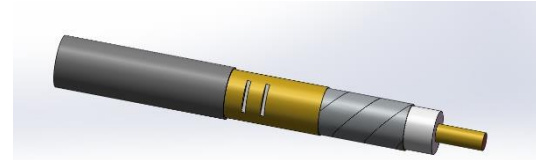


RDL 50-1/2RM – High Fire resistant LSOH Jacket M5681Z

Description

Inner Conductor:	Copper - clad Aluminium	4.8 mm
Insulation:	Physically foamed PE	12.2 mm
Fire Barrier:	Mica tape	
Outer Conductor:	Overlapping copper foil with slots	
Jacket:	Low smoke Zero Halogen Compound	15.7 mm
Ink Marking:	ACOME RADIACELL COAX LSOH HFR RDL 50-1/2RM M5681 LOT X lot N° (+ Metric length)	



Electrical Characteristics

Impedance:		50 ± 2Ω
	380~450MHz	≤ 1.38
VSWR:	698~769MHz	≤ 1.38
	806~960MHz	≤ 1.38
Capacitance:	Typical	76 pF/m
Velocity:		88%
Cut Off Frequency:		8.8GHz
Dielectric Constant:	Typical	1.3
DC breakdown Voltage:		3 kV
Insulation Resistance:		> 5000 MΩ.km

Frequency (MHz)	Attenuation (dB/km) @ 20°C Max.	Coupling Loss (50%) @ 20°C dB	Coupling Loss (95%) @ 20°C dB
100	26.1	75	80
150	42.6	72	79
400	54.1	74	79
450	58.3	78	79
470	60.0	78	79
900	86.8	77	78

Mechanical Characteristics

Bending Radius:	150mm – Min
Tensile Strength:	1300 N – Max
Weight:	235kg/km

Environmental Characteristics

Temperature Range:	Operating	-30°C / +80°C
	Installation	-10°C / +60°C
	Storage	-30°C / +80°C
pH:	IEC 60754-2	≥4.3
Conductivity:	IEC 60754-2	≤10 μ s/mm
Acid gas emission test:	IEC 60754-1	≤5.0 mg/g
Smoking density test (Min. photic rate)	IEC 61034-2	≥60%
Flame retardant:	IEC 60332-1, IEC 60332-3-24	
CPR:	B2ca for Preliminary	