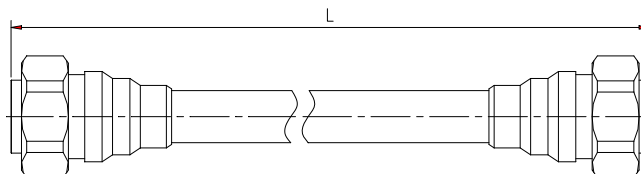


## Jumper 1/2SF PE 7/16 Din Male - 7/16 Din Male

## ASTB-01X

### Description

<b>Cable:</b>	ACOME 50-1/2SF PE cable
<b>Connector:</b>	7/16 Din male
<b>Assembly:</b>	Inner and outer contact 100% soldered and with molding



### Electrical Characteristics

<b>Impedance:</b>	50 ± 1Ω
<b>Operating Frequency Range:</b>	DC ~ 3GHz
<b>RMS Power (40 °C - 2 GHz):</b>	0.52 KW
<b>Velocity:</b>	83%
<b>Passive Intermodulation Measured In Swept Frequency Mode, With 2 × 20W Carriers:</b>	IM3 at 900MHz ≤ -160 dBc IM3 at 1800MHz ≤ -160 dBc IM7 at 2100MHz ≤ -160 dBc

### Mechanical Characteristics

<b>Material and Finish of Connector Body:</b>	Copper alloy - plated brass
<b>Material and Finish of Coupling Nut:</b>	Nickel - plated brass
<b>Material and Finish of Inner Conductor:</b>	Silver - plated bronze
<b>Coupling Waterproof:</b>	Silicone Rubber O-ring
<b>Coupling Torque:</b>	30 N.m Max.
<b>Minimum Bending Radius:</b>	25 mm

### Environmental Characteristics

<b>Temperature:</b>	Operating -55 °C / +70 °C Installation -25 °C / +55 °C Storage -50 °C / +70 °C
<b>Waterproof Index:</b>	IP68 (1m /24 h)
<b>RoHS Compliance:</b>	Yes
<b>Test Methods:</b>	IEC 61169, IEC 62037, IEC 60529

Length (m)	Product number	Weight (g)	Frequency 0/1000MHz		Frequency 1000/2200MHz		Frequency 2200/3000MHz	
			RL (dB)	ATT (dB)	RL (dB)	ATT (dB)	RL (dB)	ATT (dB)
0.5	C0268X	260	-32	0.15	-30	0.23	-26	0.27
0.7	C1353X	280	-32	0.20	-30	0.30	-26	0.35
1	C0021X	330	-32	0.21	-30	0.33	-26	0.37
1.5	C0016X	410	-32	0.26	-30	0.40	-26	0.47
2	C0022X	480	-32	0.33	-30	0.48	-26	0.57
2.5	C0023X	555	-32	0.38	-30	0.57	-26	0.67
3	C0018X	635	-32	0.43	-30	0.66	-26	0.78
3.5	C1497X	700	-32	0.50	-30	0.77	-26	0.91
4	C0246X	780	-32	0.54	-30	0.82	-26	0.97
4.5	C1542X	845	-32	0.61	-30	0.94	-26	1.12
5	C0248X	925	-32	0.66	-30	0.99	-26	1.16
6	C1375X	1075	-32	0.78	-30	1.20	-26	1.40
7	C1530X	1230	-30	0.89	-28	1.36	-24	1.61
8	C1531X	1375	-30	0.99	-28	1.53	-24	1.81
9	C1552X	1525	-30	1.10	-28	1.69	-24	2.02
10	C1407X	1675	-30	1.22	-28	1.84	-24	2.19
12	C1491X	1970	-30	1.43	-28	2.20	-24	2.62
15	C2673X	2420	-30	1.76	-28	2.71	-24	3.23
20	C2830X	3165	-26	2.31	-26	3.55	-24	4.25
22	C4305X	3480	-26	2.53	-26	3.89	-24	4.64