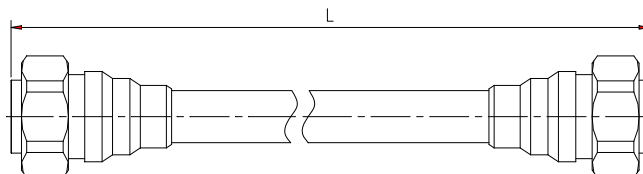


Jumper 1/2F PE 7/16 Din Male - 7/16 Din Male

ASTB-02X

Description

Cable:	ACOME 50-1/2F PE cable
Connector:	7/16 Din male
Assembly:	Inner and outer contact 100% soldered and with molding



Electrical Characteristics

Impedance:	50 ± 1Ω	
Operating Frequency Range:	DC ~ 3GHz	
RMS Power (40 °C - 2 GHz):	0.81 KW	
Velocity:	87%	
Passive Intermodulation Measured In Swept Frequency Mode, With 2 × 20W Carriers:	IM3 at 900MHz	≤ -160 dBc
	IM3 at 1800MHz	≤ -160 dBc
	IM7 at 2100MHz	≤ -160 dBc

Mechanical Characteristics

Material and Finish of Connector Body:	Copper alloy - plated brass
Material and Finish of Coupling Nut:	Nickel - plated brass
Material and Finish of Inner Conductor:	Silver - plated bronze
Coupling Waterproof:	Silicone Rubber O-ring
Coupling Torque:	30 N.m Max.
Minimum Bending Radius:	70 mm

Environmental Characteristics

Temperature:	Operating	-55 °C / +70 °C
	Installation	-25 °C / +55 °C
	Storage	-50 °C / +70 °C
Waterproof Index:	IP68 (1m /24 h)	
RoHS Compliance:	Yes	
Test Methods:	IEC 61169, IEC 62037, IEC 60529	

Length (m)	Product number	Weight (g)	Frequency 0/1000MHz		Frequency 1000/2200MHz		Frequency 2200/3000MHz	
			RL (dB)	ATT (dB)	RL (dB)	ATT (dB)	RL (dB)	ATT (dB)
0.5	C1350X	280	-32	0.15	-30	0.23	-26	0.27
0.7	C1351X	320	-32	0.17	-30	0.25	-26	0.29
1	C0076X	378	-32	0.18	-30	0.26	-26	0.30
1.5	C0017X	475	-32	0.22	-30	0.32	-26	0.37
2	C0020X	570	-32	0.26	-30	0.38	-26	0.44
2.5	C0077X	675	-32	0.28	-30	0.43	-26	0.51
3	C0019X	775	-32	0.33	-30	0.49	-26	0.57
4	C0250X	972	-32	0.39	-30	0.61	-26	0.71
5	C0252X	1165	-32	0.46	-30	0.71	-26	0.84
6	C2026X	1363	-32	0.55	-30	0.85	-26	1.01
7	C2027X	1556	-30	0.62	-28	0.96	-24	1.14
8	C2036X	1759	-30	0.70	-28	1.08	-24	1.28
9	C4449X	1962	-30	0.78	-28	1.19	-24	1.41
10	C2037X	2145	-30	0.84	-28	1.29	-24	1.54
12	C2038X	2550	-30	0.98	-28	1.50	-24	1.70
14	C4604X	2850	-30	1.14	-28	1.75	-24	2.08