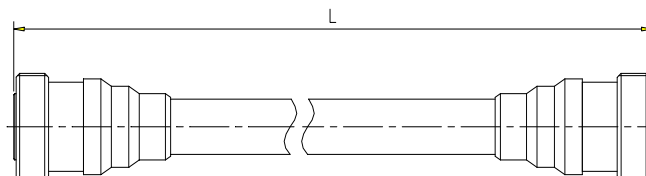


Jumper 1/2SF PE 7/16 Din Female - 7/16 Din Female **ASTB-03X**

Description

Cable:	ACOME 50-1/2SF PE cable
Connector:	7/16 Din Female
Assembly:	Inner and outer contact 100% soldered and with molding



Electrical Characteristics

Impedance:	50 ± 1Ω	
Operating Frequency Range:	DC ~ 3GHz	
RMS Power (40 °C - 2 GHz):	0.52 KW	
Velocity:	83%	
Passive Intermodulation Measured In Swept Frequency Mode, With 2 × 20W Carriers:	IM3 at 900MHz	≤ -160 dBc
	IM3 at 1800MHz	≤ -160 dBc
	IM7 at 2100MHz	≤ -160 dBc

Mechanical Characteristics

Material and Finish of Connector Body:	Copper alloy - plated brass
Material and Finish of Coupling Nut:	Nickel - plated brass
Material and Finish of Inner Conductor:	Silver - plated bronze
Coupling Waterproof:	Silicone Rubber O-ring
Coupling Torque:	30 N.m Max.
Minimum Bending Radius:	25 mm

Environmental Characteristics

Temperature :	Operating	-55 °C / +70 °C
	Installation	-25 °C / +55 °C
	Storage	-50 °C / +70 °C
Waterproof Index:	IP68 (1m /24 h)	
RoHS Compliance:	Yes	
Test Methods:	IEC 61169, IEC 62037, IEC 60529	

Length (m)	Product number	Weight (g)	Frequency 0/1000MHz		Frequency 1000/2200MHz		Frequency 2200/3000MHz	
			RL (dB)	ATT (dB)	RL (dB)	ATT (dB)	RL (dB)	ATT (dB)
1	C0690X	320	-32	0.21	-30	0.33	-26	0.37
1.5	C0691X	390	-32	0.26	-30	0.40	-26	0.47
2	C0692X	465	-32	0.33	-30	0.48	-26	0.57
2.5	C0693X	540	-32	0.38	-30	0.57	-26	0.67
3	C0694X	620	-32	0.43	-30	0.66	-26	0.78
3.5	C1020X	700	-32	0.49	-30	0.76	-26	0.88
4	C0695X	770	-32	0.54	-30	0.82	-26	0.97
5	C0696X	920	-32	0.66	-30	0.99	-26	1.16