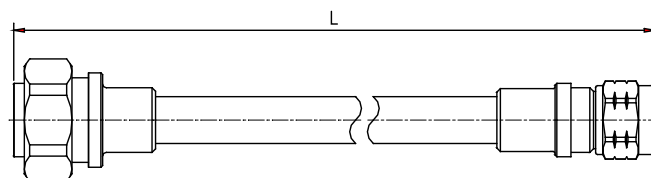


Jumper 1/2SF PE 7/16 Din Male - N Male

ASTB-05X

Description

Cable:	ACOME 50-1/2SF PE cable
Connector:	7/16 Din male / N male
Assembly:	Inner and outer contact 100% soldered and with molding



Electrical Characteristics

Impedance:	50 ± 1Ω	
Operating Frequency Range:	DC ~ 3GHz	
RMS Power (40 °C - 2 GHz):	0.52 KW	
Velocity:	83%	
Passive Intermodulation Measured In Swept Frequency Mode, With 2 × 20W Carriers:	IM3 at 900MHz	≤ -160 dBc
	IM3 at 1800MHz	≤ -160 dBc
	IM7 at 2100MHz	≤ -160 dBc

Mechanical Characteristics

Material and Finish of Connector Body:	Copper alloy - plated brass	
Material and Finish of Coupling Nut:	Nickel - plated brass	
Material and Finish of Inner Conductor:	Silver - plated bronze	
Coupling Waterproof:	Silicone Rubber O-ring	
Coupling Torque:	N interface	2.5 N.m Max.
	Din interface	30 N.m Max.
Minimum Bending Radius:	25 mm	

Environmental Characteristics

Temperature:	Operating	-55 °C / +70 °C
	Installation	-25 °C / +55 °C
	Storage	-50 °C / +70 °C
Waterproof Index:	IP68 (1m /24 h)	
RoHS Compliance:	Yes	
Test Methods:	IEC 61169, IEC 60529	

Length (m)	Product number	Weight (g)	Frequency 0/1000MHz		Frequency 1000/2200MHz		Frequency 2200/3000MHz	
			RL (dB)	ATT (dB)	RL (dB)	ATT (dB)	RL (dB)	ATT (dB)
0.5	C2262X	220	-32	0.16	-30	0.24	-26	0.29
1	C0311X	293	-32	0.21	-30	0.33	-26	0.37
1.5	C0293X	370	-32	0.26	-30	0.40	-26	0.47
2	C0294X	443	-32	0.33	-30	0.48	-26	0.57
2.5	C2903X	518	-32	0.38	-30	0.59	-26	0.67
3	C0295X	590	-32	0.43	-30	0.66	-26	0.78
4	C1456X	740	-32	0.55	-30	0.84	-26	1.00
5	C0906X	887	-32	0.65	-30	1.01	-26	1.20
6	C2048X	1040	-32	0.77	-30	1.19	-26	1.41
7	C2049X	1185	-30	0.88	-28	1.36	-24	1.61
8	C2050X	1335	-30	0.99	-28	1.52	-24	1.81
10	C1538X	1630	-30	1.22	-28	1.84	-24	2.19
15	C2831X	2373	-30	1.76	-28	2.71	-24	3.23
20	C2832X	3116	-30	2.31	-28	3.55	-24	4.25