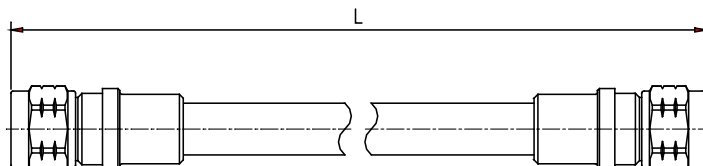


Jumper 1/2SF PE N Male – N Male

ASTB-06X

Description

Cable:	ACOME 50-1/2SF PE cable
Connector:	N male
Assembly:	Inner and outer contact 100% soldered and with molding



Electrical Characteristics

Impedance:	50 ± 1Ω	
Operating Frequency Range:	DC ~ 3GHz	
RMS Power (40 °C - 2 GHz):	0.52 KW	
Velocity:	83%	
Passive Intermodulation Measured In Swept Frequency Mode, With 2 × 20W Carriers:	IM3 at 900MHz	≤ -160 dBc
	IM3 at 1800MHz	≤ -160 dBc
	IM7 at 2100MHz	≤ -160 dBc

Mechanical Characteristics

Material and Finish of Connector Body:	Copper alloy - plated brass
Material and Finish of Coupling Nut:	Nickel - plated brass
Material and Finish of Inner Conductor:	Silver - plated bronze
Coupling Waterproof:	Silicone Rubber O-ring
Coupling Torque:	2.5 N.m Max.
Minimum Bending Radius:	25 mm

Environmental Characteristics

Temperature:	Operating	-55 °C / +70 °C
	Installation	-25 °C / +55 °C
	Storage	-50 °C / +70 °C
Waterproof Index:	IP68 (1m /24 h)	
RoHS Compliance:	Yes	
Test Methods:	IEC 61169, IEC 60529	

Length (m)	Product number	Weight (g)	Frequency 0/1000MHz		Frequency 1000/2200MHz		Frequency 2200/3000MHz	
			RL (dB)	ATT (dB)	RL (dB)	ATT (dB)	RL (dB)	ATT (dB)
0.2	C0992X	156	-32	0.14	-30	0.21	-26	0.25
0.3	C0932X	177	-32	0.15	-30	0.23	-26	0.27
0.5	C0704X	207	-32	0.17	-30	0.26	-26	0.31
1	C0024X	280	-32	0.21	-30	0.33	-26	0.37
1.5	C0025X	360	-32	0.26	-30	0.40	-26	0.47
2	C0026X	440	-32	0.33	-30	0.48	-26	0.57
2.5	C0027X	510	-32	0.38	-30	0.57	-26	0.67
3	C0028X	590	-32	0.43	-30	0.66	-26	0.78
4	C1453X	750	-32	0.56	-30	0.86	-26	1.01
5	C0930X	900	-32	0.66	-30	1.03	-26	1.22
6	C1419X	1050	-32	0.78	-30	1.19	-26	1.42
7	C2833X	1200	-30	0.89	-28	1.36	-24	1.62
10	C1437X	1650	-30	1.22	-28	1.84	-24	2.19
15	C2834X	2400	-30	1.76	-28	2.71	-24	3.23
20	C2835X	3150	-30	2.31	-28	3.55	-24	4.23
30	C2871X	4750	-30	3.41	-28	5.05	-24	6.23
40	C2855X	6350	-30	4.49	-28	6.97	-24	8.37
45	C2872X	7150	-30	5.06	-28	7.72	-24	9.37