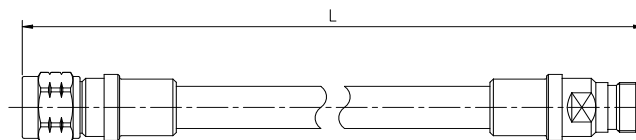


## Jumper 1/2SF PE N Male – N Female

## ASTB-09X

### Description

<b>Cable:</b>	ACOME 50-1/2SF PE cable
<b>Connector:</b>	N male / N female
<b>Assembly:</b>	Inner and outer contact 100% soldered and with molding



### Electrical Characteristics

<b>Impedance:</b>	50 ± 1Ω	
<b>Operating Frequency Range:</b>	DC ~ 3GHz	
<b>RMS Power (40 °C - 2 GHz):</b>	0.52 KW	
<b>Velocity:</b>	83%	
<b>Passive Intermodulation Measured In Swept Frequency Mode, With 2 × 20W Carriers:</b>	IM3 at 900MHz	≤ -160 dBc
	IM3 at 1800MHz	≤ -160 dBc
	IM7 at 2100MHz	≤ -160 dBc

### Mechanical Characteristics

<b>Material and Finish of Connector Body:</b>	Copper alloy - plated brass
<b>Material and Finish of Coupling Nut:</b>	Nickel - plated brass
<b>Material and Finish of Inner Conductor:</b>	Silver - plated bronze
<b>Coupling Waterproof:</b>	Silicone Rubber O-ring
<b>Coupling Torque:</b>	2.5 N.m Max.
<b>Minimum Bending Radius:</b>	25 mm

### Environmental Characteristics

<b>Temperature:</b>	Operating	-55 °C / +70 °C
	Installation	-25 °C / +55 °C
	Storage	-50 °C / +70 °C
<b>Waterproof Index:</b>	IP68 (1m /24 h)	
<b>RoHS Compliance:</b>	Yes	
<b>Test Methods:</b>	IEC 61169, IEC 62037, IEC 60529	

Length (m)	Product number	Weight (g)	Frequency 0/1000MHz		Frequency 1000/2200MHz		Frequency 2200/3000MHz	
			RL (dB)	ATT (dB)	RL (dB)	ATT (dB)	RL (dB)	ATT (dB)
0.2	C2773X	141	-32	0.14	-30	0.21	-26	0.25
0.3	C2774X	156	-32	0.15	-30	0.23	-26	0.27
0.5	C1577X	186	-32	0.17	-30	0.26	-26	0.30
1	C0687X	260	-32	0.21	-30	0.33	-26	0.37
1.5	C1550X	335	-32	0.28	-30	0.43	-26	0.51
2	C0639X	410	-32	0.33	-30	0.48	-26	0.57
2.5	C0784X	485	-32	0.38	-30	0.57	-26	0.67
3	C0702X	560	-32	0.43	-30	0.66	-26	0.78
4	C0703X	720	-32	0.54	-30	0.82	-26	0.97
5	C1332X	870	-32	0.67	-30	1.02	-26	1.22
6	C2917X	1020	-30	0.79	-28	1.19	-24	1.40
7	C2849X	1170	-30	0.89	-28	1.36	-24	1.62
8	C2918X	1320	-30	1.01	-28	2.55	-24	1.82
10	C2850X	1620	-30	1.22	-28	1.84	-24	2.19
15	C2851X	2370	-30	1.76	-28	2.71	-24	3.23
20	C2852X	3120	-30	2.31	-28	3.55	-24	4.23