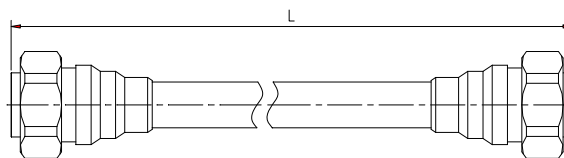


Jumper 1/2SF LSOH 7/16 Din Male – 7/16 Din Male **ASTB-11X**

Description

Cable:	ACOME 50-1/2SF LSOH cable
Connector:	7/16 Din male
Assembly:	Inner and outer contact 100% soldered and with molding



Electrical Characteristics

Impedance:	50 ± 1Ω	
Operating Frequency Range:	DC ~ 3GHz	
RMS Power (40 °C - 2 GHz):	0.52 KW	
Velocity:	83%	
Passive Intermodulation Measured In Swept Frequency Mode, With 2 × 20W Carriers:	IM3 at 900MHz	≤ -160 dBc
	IM3 at 1800MHz	≤ -160 dBc
	IM7 at 2100MHz	≤ -160 dBc

Mechanical Characteristics

Material and Finish of Connector Body:	Copper alloy - plated brass
Material and Finish of Coupling Nut:	Nickel - plated brass
Material and Finish of Inner Conductor:	Silver - plated bronze
Coupling Waterproof:	Silicone Rubber O-ring
Coupling Torque:	30 N.m Max.
Minimum Bending Radius:	25 mm

Environmental Characteristics

Temperature:	Operating	-40 °C / +70 °C
	Installation	-25 °C / +55 °C
	Storage	-50 °C / +70 °C
Waterproof Index:	IP68 (1m /24 h)	
RoHS Compliance:	Yes	
Test Methods:	IEC 61169, IEC 62037, IEC 60529	

Length (m)	Product number	Weight (g)	Frequency 0/1000MHz		Frequency 1000/2200MHz		Frequency 2200/3000MHz	
			RL (dB)	ATT (dB)	RL (dB)	ATT (dB)	RL (dB)	ATT (dB)
0.5	C2987X	277	-32	0.15	-30	0.23	-26	0.27
1	C0364X	330	-32	0.21	-30	0.33	-26	0.37
1.5	C1586X	442	-32	0.28	-30	0.43	-26	0.51
2	C0030X	525	-32	0.33	-30	0.48	-26	0.57
3	C0750X	688	-32	0.43	-30	0.66	-26	0.78
4	C0911X	850	-32	0.56	-30	0.85	-26	1.01
5	C0751X	1015	-32	0.66	-30	0.99	-26	1.16
6	C2964X	1180	-32	0.77	-30	1.19	-26	1.41
7.5	C0752X	1425	-30	0.92	-28	1.42	-24	1.68
8	C2965X	1508	-30	0.99	-28	1.52	-24	1.81