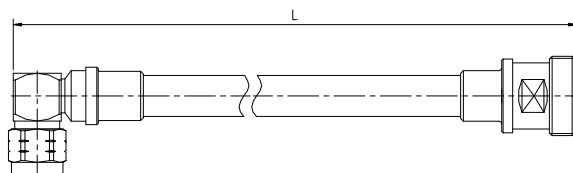


## Jumper 1/2SF PE N Male Elbow – 7/16 Din Female

## ASTB-15X

### Description

<b>Cable:</b>	ACOME 50-1/2SF PE cable
<b>Connector:</b>	N male elbow / 7/16 Din female
<b>Assembly:</b>	Inner and outer contact 100% soldered and with thermal shrink tube



### Electrical Characteristics

<b>Impedance:</b>	50 ± 1Ω	
<b>Operating Frequency Range:</b>	DC ~ 3GHz	
<b>RMS Power (40 °C - 2 GHz):</b>	0.52 KW	
<b>Velocity:</b>	83%	
<b>Passive Intermodulation Measured In Swept Frequency Mode, With 2 × 20W Carriers:</b>	IM3 at 900MHz	≤ -155 dBc
	IM3 at 1800MHz	≤ -155 dBc
	IM7 at 2100MHz	≤ -155 dBc

### Mechanical Characteristics

<b>Material and Finish of Connector Body:</b>	Copper alloy - plated brass	
<b>Material and Finish of Coupling Nut:</b>	Nickel - plated brass	
<b>Material and Finish of Inner Conductor:</b>	Silver - plated bronze	
<b>Coupling Waterproof:</b>	Silicone Rubber O-ring	
<b>Coupling Torque:</b>	N interface	2.5 N.m Max.
	Din interface	30 N.m Max.
<b>Minimum Bending Radius:</b>	25 mm	

### Environmental Characteristics

<b>Temperature:</b>	Operating	-55 °C / +70 °C
	Installation	-25 °C / +55 °C
	Storage	-50 °C / +70 °C
<b>Waterproof Index:</b>	IP68 (1m /24 h)	

Length (m)	Product number	Weight (g)	Frequency 0/1000MHz		Frequency 1000/2200MHz		Frequency 2200/3000MHz	
			RL (dB)	ATT (dB)	RL (dB)	ATT (dB)	RL (dB)	ATT (dB)
1.5	C0898X	425	-28	0.28	-26	0.43	-24	0.51
2	C0899X	502	-28	0.33	-26	0.51	-24	0.61
2.5	C0900X	580	-28	0.39	-26	0.60	-24	0.71
3	C0901X	660	-28	0.44	-26	0.68	-24	0.81
5	C2019X	960	-28	0.67	-26	1.02	-24	1.22