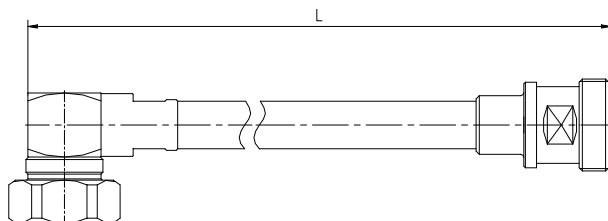


Jumper 1/2SF PE 7/16 Din Male Elbow – 7/16 Din Female

ASTB-16X

Description

Cable:	ACOME 50-1/2SF PE cable
Connector:	7/16 Din male elbow / 7/16 Din female
Assembly:	Inner and outer contact 100% soldered and with molding



Electrical Characteristics

Impedance:	50 ± 1Ω	
Operating Frequency Range:	DC ~ 3GHz	
RMS Power (40 °C - 2 GHz):	0.52 KW	
Velocity:	83%	
Passive Intermodulation Measured In Swept Frequency Mode, With 2 × 20W Carriers:	IM3 at 900MHz	≤ -160 dBc
	IM3 at 1800MHz	≤ -160 dBc
	IM7 at 2100MHz	≤ -160 dBc

Mechanical Characteristics

Material and Finish of Connector Body:	Copper alloy - plated brass
Material and Finish of Coupling Nut:	Nickel - plated brass
Material and Finish of Inner Conductor:	Silver - plated bronze
Coupling Waterproof:	Silicone Rubber O-ring
Coupling Torque:	30 N.m Max.
Minimum Bending Radius:	25 mm

Environmental Characteristics

Temperature:	Operating	-55 °C / +70 °C
	Installation	-25 °C / +55 °C
	Storage	-50 °C / +70 °C
Waterproof Index:	IP68 (1m /24 h)	
RoHS Compliance:	Yes	
Test Methods:	IEC 61169, IEC 62037, IEC 60529	

Length (m)	Product number	Weight (g)	Frequency 0/1000MHz		Frequency 1000/2200MHz		Frequency 2200/3000MHz	
			RL (dB)	ATT (dB)	RL (dB)	ATT (dB)	RL (dB)	ATT (dB)
0.5	C0961X	330	-28	0.17	-26	0.25	-24	0.30
1	C2814X	400	-28	0.22	-26	0.34	-24	0.40
1.5	C0972X	485	-28	0.29	-26	0.43	-24	0.49
2	C0894X	555	-28	0.33	-26	0.51	-24	0.61
2.5	C1320X	630	-28	0.39	-26	0.60	-24	0.72
3	C0893X	705	-28	0.44	-26	0.68	-24	0.81
4	C1537X	855	-28	0.56	-26	0.85	-24	1.01
5	C1342X	1010	-28	0.66	-26	1.02	-24	1.21
6	C2888X	1165	-28	0.77	-26	1.19	-24	1.41
7	C2889X	1320	-28	0.88	-26	1.36	-24	1.61
8	C2890X	1475	-28	0.10	-26	1.53	-24	1.81
10	C2137X	760	-28	1.22	-26	1.87	-24	2.22