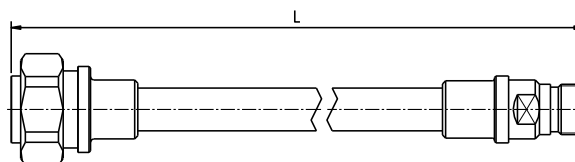


Jumper 1/2SF PE 7/16 Din Male - N Female

ASTB-18X

Description

Cable:	ACOME 50-1/2SF PE cable
Connector:	7/16 Din male / N female
Assembly:	Inner and outer contact 100% soldered and with molding



Electrical Characteristics

Impedance:	50 ± 1Ω	
Operating Frequency Range:	DC ~ 3GHz	
RMS Power (40 °C - 2 GHz):	0.52 KW	
Velocity:	83%	
Passive Intermodulation Measured In Swept Frequency Mode, With 2 × 20W Carriers:	IM3 at 900MHz	≤ -160 dBc
	IM3 at 1800MHz	≤ -160 dBc
	IM7 at 2100MHz	≤ -160 dBc

Mechanical Characteristics

Material and Finish of Connector Body:	Copper alloy - plated brass	
Material and Finish of Coupling Nut:	Nickel - plated brass	
Material and Finish of Inner Conductor:	Silver - plated bronze	
Coupling Waterproof:	Silicone Rubber O-ring	
Coupling Torque:	N interface	2.5 N.m Max.
	Din interface	30 N.m Max.
Minimum Bending Radius:	25 mm	

Environmental Characteristics

Temperature:	Operating	-55 °C / +70 °C
	Installation	-25 °C / +55 °C
	Storage	-50 °C / +70 °C
Waterproof Index:	IP68 (1m /24 h)	
RoHS Compliance:	Yes	
Test Methods:	IEC 61169, IEC 60529	

Length (m)	Product number	Weight (g)	Frequency 0/1000MHz		Frequency 1000/2200MHz		Frequency 2200/3000MHz	
			RL (dB)	ATT (dB)	RL (dB)	ATT (dB)	RL (dB)	ATT (dB)
0.3	C2776X	190	-32	0.15	-30	0.23	-26	0.27
0.5	C2377X	220	-32	0.18	-30	0.27	-26	0.33
1	C0867X	295	-32	0.21	-30	0.33	-26	0.37
1.5	C0868X	370	-32	0.26	-30	0.40	-26	0.47
2	C0296X	445	-32	0.33	-30	0.48	-26	0.57
3	C0869X	595	-32	0.43	-30	0.66	-26	0.78
5	C2017X	890	-32	0.67	-30	1.02	-26	1.22
10	C4103X	1490	-30	1.21	-28	1.86	-24	2.22
15	C4104X	2090	-30	1.76	-28	2.71	-24	3.23