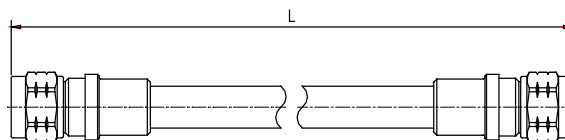


Jumper 1/2SF LSOH N Male – N Male

ASTB-64X

Description

Cable:	ACOME 50-1/2SF LSOH cable
Connector:	N male
Assembly:	Inner and outer contact 100% soldered and with molding



Electrical Characteristics

Impedance:	50 ± 1Ω	
Operating Frequency Range:	DC ~ 3GHz	
RMS Power (40 °C - 2 GHz):	0.52 KW	
Velocity:	83%	
Passive Intermodulation Measured In Swept Frequency Mode, With 2 × 20W Carriers:	IM3 at 900MHz	≤ -160 dBc
	IM3 at 1800MHz	≤ -160 dBc
	IM7 at 2100MHz	≤ -160 dBc

Mechanical Characteristics

Material and Finish of Connector Body:	Copper alloy - plated brass
Material and Finish of Coupling Nut:	Nickel - plated brass
Material and Finish of Inner Conductor:	Silver - plated bronze
Coupling Waterproof:	Silicone Rubber O-ring
Coupling Torque:	2.5 N.m Max.
Minimum Bending Radius:	25 mm

Environmental Characteristics

Temperature:	Operating	-40 °C / +70 °C
	Installation	-25 °C / +55 °C
	Storage	-50 °C / +70 °C
Waterproof Index:	IP68 (1m /24 h)	
RoHS Compliance:	Yes	
Test Methods:	IEC 61169, IEC 60529	

Length (m)	Product number	Weight (g)	Frequency 0/1000MHz		Frequency 1000/2200MHz		Frequency 2200/3000MHz	
			RL (dB)	ATT (dB)	RL (dB)	ATT (dB)	RL (dB)	ATT (dB)
0.5	C0916X	213	-32	0.16	-30	0.26	-26	0.30
1	C1308X	296	-32	0.21	-30	0.33	-26	0.38
1.5	C0786X	379	-32	0.28	-30	0.42	-26	0.50
2	C0928X	462	-32	0.33	-30	0.49	-26	0.59
3	C0866X	628	-32	0.43	-30	0.66	-26	0.79
5	C0907X	960	-32	0.65	-30	1.00	-26	1.19
6	C1535X	1126	-32	0.78	-30	1.19	-26	1.42