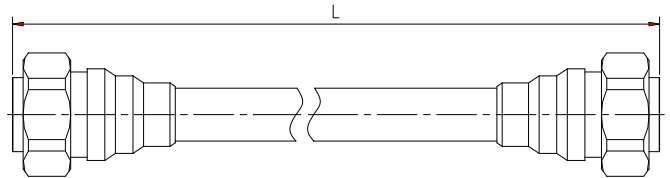


## Jumper 1/2F LSOH 7/16 Din Male – 7/16 Din Male

## ASTB-96X

### Description

<b>Cable:</b>	ACOME 50-1/2F LSOH cable
<b>Connector:</b>	7/16 Din male
<b>Assembly:</b>	Inner and outer contact 100% soldered and with molding



### Electrical Characteristics

<b>Impedance:</b>	50 ± 1Ω	
<b>Operating Frequency Range:</b>	DC ~ 3GHz	
<b>RMS Power (40 °C - 2 GHz):</b>	0.81 KW	
<b>Velocity:</b>	87%	
<b>Passive Intermodulation Measured In Swept Frequency Mode, With 2 × 20W Carriers:</b>	IM3 at 900MHz	≤ -160 dBc
	IM3 at 1800MHz	≤ -160 dBc
	IM7 at 2100MHz	≤ -160 dBc

### Mechanical Characteristics

<b>Material and Finish of Connector Body:</b>	Copper alloy - plated brass
<b>Material and Finish of Coupling Nut:</b>	Nickel - plated brass
<b>Material and Finish of Inner Conductor:</b>	Silver - plated bronze
<b>Coupling Waterproof:</b>	Silicone Rubber O-ring
<b>Coupling Torque:</b>	30 N.m Max.
<b>Minimum Bending Radius:</b>	70 mm

### Environmental Characteristics

<b>Temperature:</b>	Operating	-40 °C / +70 °C
	Installation	-25 °C / +55 °C
	Storage	-50 °C / +70 °C
<b>Waterproof Index:</b>	IP68 (1m /24 h)	
<b>RoHS Compliance:</b>	Yes	
<b>Test Methods:</b>	IEC 61169, IEC 62037, IEC 60529	

Length (m)	Product number	Weight (g)	Frequency 0/1000MHz		Frequency 1000/2200MHz		Frequency 2200/3000MHz	
			RL (dB)	ATT (dB)	RL (dB)	ATT (dB)	RL (dB)	ATT (dB)
0.5	C1568X	310	-32	0.15	-30	0.23	-26	0.27
1	C4442X	425	-32	0.19	-30	0.29	-26	0.34
2	C4443X	655	-32	0.27	-30	0.40	-26	0.48
3	C4444X	882	-32	0.34	-30	0.52	-26	0.61