


Constant Current Driver 恒流电源
Model 型号: KEDHXXXSYYYNR97A9


Model 型号	Output Current 输出电流	Input Current 输入电流	Input Power 输入功率	Output Power Range 输出功率范围	PF 功率因素	Efficiency 效率	Output Voltage 输出电压	No load Voltage 空载电压
KEDH025S0700NR97A9	700mA	0.16A	30W	22.4-25.2W	0.92	87%	32-36V	50V
KEDH027S0750NR97A9	750mA	0.17A	31.8W	24-27W	0.92	87%	32-36V	50V
KEDH029S0800NR97A9	800mA	0.18A	34.5W	25.6-28.8W	0.92	88%	32-36V	50V
KEDH031S0850NR97A9	850mA	0.19A	35.5W	27.2-30.6W	0.95	88%	32-36V	50V
KEDH032S0900NR97A9	900mA	0.2A	37.8W	28.8-32.4W	0.95	89%	32-36V	50V
KEDH034S0950NR97A9	950mA	0.21A	39.5W	30.4-34.2W	0.95	89%	32-36V	50V
KEDH030S0700NR97A9	700mA	0.17A	31.5W	23.8-26.6W	0.95	87%	34-38V	50V
KEDH030S0750NR97A9	750mA	0.18A	34W	25.5-28.5W	0.95	87%	34-38V	50V
KEDH030S0800NR97A9	800mA	0.19A	36W	27.2-30.4W	0.92	88%	34-38V	50V
KEDH032S0850NR97A9	850mA	0.2A	37.2W	28.9-32.3W	0.95	88%	34-38V	50V
KEDH036S0900NR97A9	900mA	0.21A	40W	30.6-34.2W	0.95	89%	34-38V	50V
KEDH036S0950NR97A9	950mA	0.22A	41.5W	32.3-36.1W	0.95	89%	34-38V	50V

* Test result @230V, 50Hz, Full Load. 所有测试参数基于@230V, 50Hz, 满载

1. Parameters 参数表

category 类别	Item 项目	Technical Norm 技术指标
Features 特性	Output Type 输出类型	Constant Current 恒流
	IP Grade 等级	IP20
	Insulation Class 绝缘等级	Class II





科谷电源

Power the world · power the future

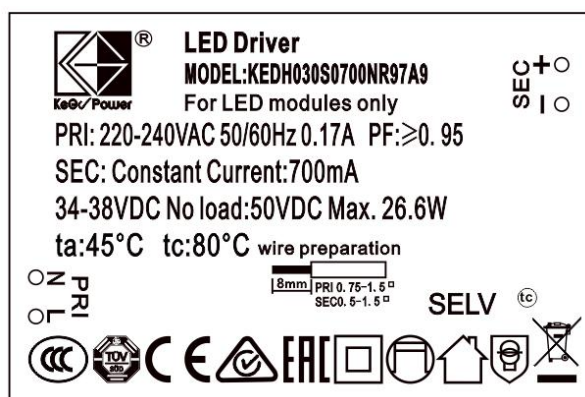
驱动世界 · 驱动未来

Input 输入参数	Rated Input Voltage 额定输入电压	220-240VAC
	Range of Input Voltage 输入电压范围	198-264VAC
	Frequency 输入频率	50/60Hz
	Input Current 输入电流	≤0.22A (198VAC, full load)
	Input Power 输入功率	≤41.5 W (230VAC, full load)
	Power Factor 功率因素	≥0.92 (230VAC, full load)
	THD 谐波	≤15% (230VAC, full load)
	No-load Power Consumption 空载功耗	≤0.5W @230VAC
	Inrush Current 涌入电流	≤48A/20us (32-36W, 230VAC, Full-load) ≤42A/20us (25-30W, 230VAC, Full-load)
	Connected quantity of 16A Breaker 断路器电源连接数量	32-36W 10pcs/type B ;17pcs/type C @ 230Vac 25-30W 11pcs/type B ;19pcs/type C @ 230Vac
Output 输出参数	Current Accuracy 电流精度	±5%
	Max. Output Power 最大输出功率	36.1W
	Started Delay Time 启动延时	≤0.5S (230VAC, full load)
	Current Ripple 纹波电流	±5% (Imax-Imin) / (Imax+Imin)
Protection 保护特性	Short Circuit Protection 短路保护	Auto Recovery
	Overload Protection 过载保护	Auto Recovery
	No-load Protection 空载保护	Auto Recovery
	Insulation voltage 绝缘电压	I/P to O/P, 3KVac/1min
	Insulation resistance 绝缘电阻	>100M ohm @ 500VDC
	Leakage current 漏电流	I/P to O/P < 250 μ A
Environment 使用环境	Ta/Operation Temperature 工作温度	-20....+45℃
	Ts/Storage Temperature 储存温度	-20....+85℃
	Tc/Enclosure Temperature 外壳温度	(25-34W) 80 ℃ (36W) 85℃
	Humidity 湿度	10%....90%RH
	Atmosphere 大气压强	86-108KPa
Construction 安装	Connection Method 连接方式	Screw Terminal 压线端子
	Installation 安装方式	Independent 独立式
	PRI Wire preparation 输入线径	0.75-1.5 [□]
	SEC Wire preparation 输出线径	0.5-1.5 [□]
	Dimension 尺寸	105x 45 x 25mm (L*W*H)
Standards 标准	Certification 证书	TUV/CE/SAA/CCC
	Safety Standards 安全标准	EN61347-1:2015,EN61347-2-13:2014/A1:2017,E N62493:2015, AS/NZS IEC61347.2.13:2013, AS/NZS 61347.1:2016, GB19510.1-2009, GB19510.14-2009
	EMC Standards 电磁兼容标准	EN55015:2013/A1:2015,EN61000-3-2:2014,EN6 1000-3-3:2013,EN61547:2009,GB/T17743.2017
	Performance 性能标准	EN62384

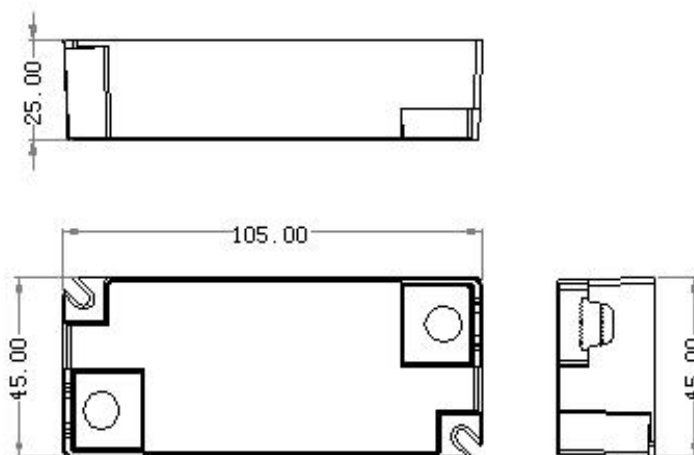


	Surge 浪涌	L-N/2KV
Others 其它	RoHS 环保	complied to 2011/65/EU
	Life Time 寿命	30000h @45°C (Ta) / 80°C/85°C (TC)
	Warranty 质保	3years , F.R. <10000ppm (质保期过的失效率)
Remark/备注		
1. 所有参数无特别说明，均在输入电压 230VAC/50Hz 和 25°C 的环境温度下测得。All Parameters, if not specified, are measured at 230VAC/50Hz and 25°C ambient temperature. 2. LED 电源作为整灯中的一个零部件与终端设备结合使用，因 EMC 性能受 LED 灯具以及走线的影响，终端设备制造商需对整套装置重新进行 EMC 确认。LED Driver is a component of the luminaires, Luminaires and wire layout will affect the EMC, please check the EMC with end products again.		

2. Label 铭牌



3. Dimension 尺寸 (Unit: mm)



4. Packing information 装箱信息



Carton L*W*H(mm) 纸箱尺寸	Pcs/Carton 数量/箱	Net weight/ Pcs(kg)净重/个	Net weight/ Carton(kg)净重/箱	Gross weight / Carton(kg)毛重/箱
450*240*200	120	0.085	10.2	11

5. Wiring Diagram 接线图

