

## Antibody Pair against Myoglobin

### Catalogue#

Capture Antibody: AbM32145-6A25-PU,  
Detection Antibody: AbM32145-3A36-PU.

### Immunogen

Myoglobin.  
Uniprot entry: P02144.  
Sequence: Recombinant full length protein.

### Product description

Purified mouse monoclonal antibody.  
Molecular ~150kDa  
Storage buffer: phosphate buffer, pH 7-8

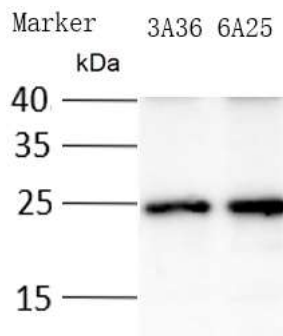
### Applications

ELISA/Western Blot

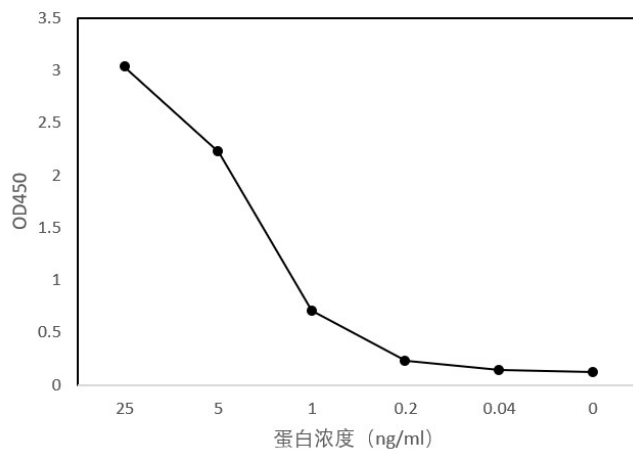
### Stability

Store at -20°C for 12 months in its original formulation. Avoid freeze-thaw cycles of the protein solution.

### Data



Western Blot analysis of recombinant protein with capture and detection antibody



Sandwich ELISA analysis of recombinant protein

*For Research Use Only* This product is intended to be used for research purposes only. It is not to be used for drug or diagnostic purposes nor is it intended for human use. Beijing Protein Innovation products may not be resold, modified for resale, or used to manufacture commercial products without written approval of Beijing Protein Innovation.

Add: B-8, Airport Industrial Zone, Beijing, 101318, China Tel: 86-10-80493132 Fax: 86-10-80485460 Email: [product@proteomics.org.cn](mailto:product@proteomics.org.cn) [www.proteomics.org.cn](http://www.proteomics.org.cn)