

# Anti-ERp31



## CATALOG #

AbM51075-5-PU

## SOURCE

Purified mouse monoclonal antibody generated using *E.coli* expressed recombinant protein ERp31 as immunogen.

## ANTIGEN

Recombinant protein corresponding to fragment (aa/33-261) ERp31.

## NCBI KEY

ERp31 [GeneID: 10961; Nucleotide: NM\_006817.3; Protein: NP\_006808.1]

## CLASS

Mouse IgG<sub>2b</sub>

## SPECIFICITY

Anti-ERp31 recognizes recombinant protein ERp31.

## APPLICATIONS

Anti-ERp31 can be used in **ELISA** and **WB-Re**.

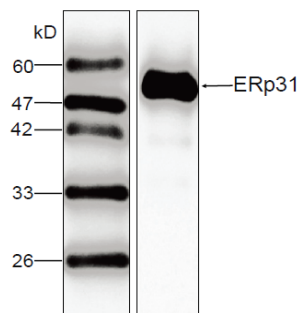
## PRODUCT

Each vial contains 100 µg IgG in 100 µl of citrate-tris-HCl buffer pH7.0 with 0.02% Proclin 300.

## STORAGE

The antibody may be stored at -20 °C for one year in its original formulation. Additionally, antibody may be stored at 2 °C to 8 °C for up to 1 month without detectable loss of activity. **Avoid repeated freeze-thaw cycles of the diluted antibody.**

## DATA



WB (1:1000) analysis of recombinant protein ERp31 with Anti-ERp31 (AbM51075-5-PU).

**For Research Use Only** This product is intended to be used for research purposes only. It is not to be used for drug or diagnostic purposes nor is it intended for human use. Beijing Protein Innovation products may not be resold, modified for resale, or used to manufacture commercial products without written approval of Beijing Protein Innovation.