

Anti-Moesin



CATALOG

AbM51110-25-PU

SOURCE

Purified mouse monoclonal antibody generated using *E.coli* expressed recombinant protein Moesin as immunogen.

ANTIGEN

Recombinant protein corresponding to full length Moesin.

Swissprot KEY

Moesin [Accession:MOES_HUMAN]

CLASS

Mouse IgG₁

SPECIFICITY

Anti- Moesin recognizes Moesin expression in Hella whole cell lysate.

APPLICATIONS

Anti- Moesin can be used in **ELISA** and **WB-Ce**.

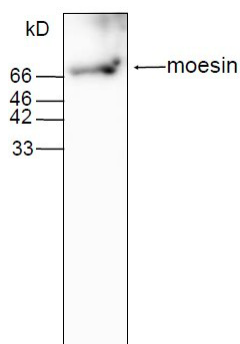
PRODUCT

Each vial contains 100 µg IgG in 100 µl of citrate-tris-HCl buffer pH7.0 with 0.02% Proclin 300.

STORAGE

The antibody may be stored at -20°C for one year in its original formulation. Additionally, antibody may be stored at 2°C to 8°C for up to 1 month without detectable loss of activity. **Avoid repeated freeze-thaw cycles of the diluted antibody.**

DATA



WB (1:500) analysis of Moesin expression in Hella whole cell lysate with Anti- Moesin (AbM51110-25-PU).

For Research Use Only This product is intended to be used for research purposes only. It is not to be used for drug or diagnostic purposes nor is it intended for human use. Beijing Protein Innovation products may not be resold, modified for resale, or used to manufacture commercial products without written approval of Beijing Protein Innovation.

Beijing Protein Innovation Co.,Ltd. (BPI)

Add: B-8, Airport Industrial Zone, Beijing, 101318, China Tel: 86-10-80493132 Fax: 86-10-80485460 Email: bpi@genomics.org.cn www.proteomics.org.cn