

Anti-HSV Tag



CATALOG

AbM59011-22A7-PU

SOURCE

Purified mouse monoclonal antibody generated using synthetic peptide HSV Tag as immunogen.

ANTIGEN

Synthetic peptide corresponding to fragment (QPELAPEDPED) HSV Tag

SWISS-PORT KEY

CLASS

Mouse IgG2a

SPECIFICITY

Anti-HSV Tag recognizes HSV and HSV-tagged fusion proteins.

APPLICATIONS

Anti-HSV Tag can be used in **Elisa** and **WB-Re**.

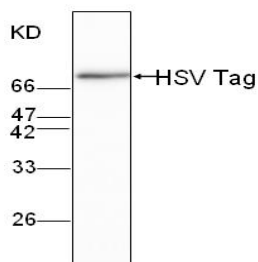
PRODUCT

Each vial contains 100 µg lyophilized IgG. Spin 2-3 minutes before open the tube, add 100 µl ddH₂O to reconstitute the lyophilized powder for 1 hour at 4 degree and mix gently by inverting 5-6 times at room temperature.

STORAGE

The antibody may be stored at -20°C for one year in its original formulation. Additionally, antibody may be stored at 2°C to 8°C for up to 1 month without detectable loss of activity. **Avoid repeated freeze-thaw cycles of the diluted antibody.**

DATA



WB (1:1000) analysis of HSV-tagged fusion protein with Anti-HSV Tag (AbM59011-22A7-PU).

For Research Use Only This product is intended to be used for research purposes only. It is not to be used for drug or diagnostic purposes nor is it intended for human use. Beijing Protein Innovation products may not be resold, modified for resale, or used to manufacture commercial products without written approval of Beijing Protein Innovation.

Beijing Protein Innovation Co.,Ltd. (BPI)

Add : B-8, Airport Industrial Zone, Beijing, 101318, China Tel: 86-10-80493132 Fax: 86-10-80485460 Email: bpi@genomics.org.cn www.proteomics.org.cn