

# Anti-Cry1A Antibody



## CATALOG #

AbM59701-9-PU

## SOURCE

Purified mouse monoclonal antibody generated using antigenic peptide.

## ANTIGEN

Antigenic peptide corresponding to Cry1Ab/1Ac/1Af serial protein from *Bacillus thuringiensis*.

## PROTEIN\_ID

## CLASS

Mouse IgG2a

## SPECIFICITY

Anti-Cry1A Antibody recognizes recombinant Cry1Ab/1Ac protein and transgenic rice.

## APPLICATIONS

Anti-Cry1A Antibody can be used in **ELISA** and **WB**.

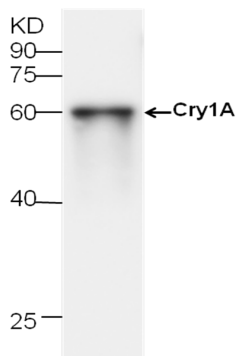
## PRODUCT

Each vial contains 100 µg IgG in 100 µl of citrate-tris-HCl buffer pH7.0 with 0.02% Proclin 300.

## STORAGE

The antibody may be stored at -20°C for one year in its original formulation. Additionally, antibody may be stored at 2°C to 8°C for up to 1 month without detectable loss of activity. **Avoid repeated freeze-thaw cycles of the diluted antibody.**

## DATA



**WB (1:1000) analysis of Cry1Ab/1Ac fusion protein with Anti-Cry1A Antibody (AbM59701-9-PU).**

**For Research Use Only** This product is intended to be used for research purposes only. It is not to be used for drug or diagnostic purposes nor is it intended for human use. Beijing Protein Innovation products may not be resold, modified for resale, or used to manufacture commercial products without written approval of Beijing Protein Innovation.