

# Anti-HPT



## CATALOG #

AbM59707-20-PU

## SOURCE

Purified mouse monoclonal antibody generated using *E.coli* expressed protein as immunogen.

## ANTIGEN

Recombinant protein corresponding to full length of HPT protein.

## PROTEIN\_ID

ABI30072.1

## CLASS

Mouse IgG2b

## SPECIFICITY

Anti-HPT recognizes transgenic rice.

## APPLICATIONS

Anti-HPT can be used in **ELISA** and **WB**.

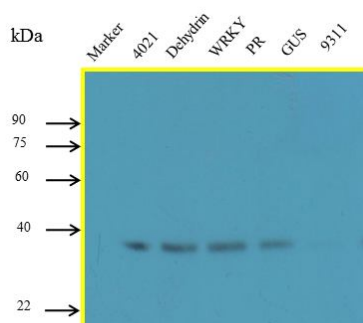
## PRODUCT

Each vial contains 100 µg IgG in 100 µl of citrate-tris-HCl buffer pH7.0 with 0.02% Proclin 300.

## STORAGE

The antibody may be stored at -20°C for one year in its original formulation. Additionally, antibody may be stored at 2°C to 8°C for up to 1 month without detectable loss of activity. **Avoid repeated freeze-thaw cycles of the diluted antibody.**

## DATA



WB (1:1000) analysis of HPT protein expression in transgenic rice tissues with Anti-HPT (AbM59707-20-PU).

**For Research Use Only** This product is intended to be used for research purposes only. It is not to be used for drug or diagnostic purposes nor is it intended for human use. Beijing Protein Innovation products may not be resold, modified for resale, or used to manufacture commercial products without written approval of Beijing Protein Innovation.

Beijing Protein Innovation Co.,Ltd. (BPI)

Add: B-8, Airport Industrial Zone, Beijing, 101318, China Tel: 86-10-80493132 Fax: 86-10-80485460 Email: bpi@genomics.org.cn www.proteomics.org.cn