

RiceAb Name: **Anti-SeedG-9**



CATALOG #

AbP80027-A-SE

SOURCE

Rabbit polyclonal antibody generated using synthetic peptide as immunogen.

ANTIGEN

Synthetic peptide of SeedG-9 protein.

Model_MSU_locus

LOC_Os10g33800.1

APPLICATIONS

Anti-SeedG-9 can be used in western blot detection against rice tissues.

PRODUCT

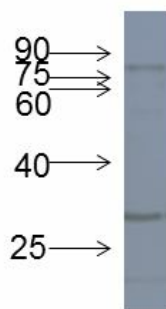
Each vial contains 100µl serum.

STORAGE

The antibody may be stored at -20°C for one year in its original formulation. Additionally, antibody may be stored at 2°C to 8°C for up to 1 month without detectable loss of activity. **Avoid repeated freeze-thaw cycles of the diluted antibody.**

DATA

KD



WB (1:1000) analysis of protein SeedG-9 expression in rice (CV. 9311) flag leaf at the flowering stage with Anti-SeedG-9 ([AbP80027-A-SE](#)).

For Research Use Only This product is intended to be used for research purposes only. It is not to be used for drug or diagnostic purposes nor is it intended for human use. Beijing Protein Innovation products may not be resold, modified for resale, or used to manufacture commercial products without written approval of Beijing Protein Innovation.