

**RiceAb**

## ***Anti-aquaporin PIP***



### **CATALOG #**

AbP80089-A-SE

### **SOURCE**

Rabbit polyclonal antibody raised against synthetic peptide aquaporin PIP as immunogen.

### **ANTIGEN**

Synthetic peptide of aquaporin PIP protein

### **BPI-Protein ID**

#BPI-proteinI-0013097

### **Model\_MSU\_locus**

LOC\_Os02g44630.1

### **APPLICATIONS**

Anti-aquaporin PIP can be used in western blot detection against rice tissues.

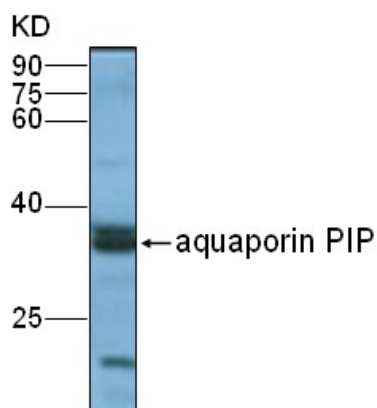
### **PRODUCT**

Each vial contains 100µl serum.

### **STORAGE**

The antibody may be stored at -20°C for one year in its original formulation. Additionally, antibody may be stored at 2°C to 8°C for up to 1 month without detectable loss of activity. **Avoid repeated freeze-thaw cycles of the diluted antibody.**

### **DATA**



WB (1:5000) analysis of protein aquaporin PIP expression in rice (CV. 9311) seeds at the filling stage with Anti-aquaporin PIP (AbP80089-A-SE).

**For Research Use Only** This product is intended to be used for research purposes only. It is not to be used for drug or diagnostic purposes nor is it intended for human use. Beijing Protein Innovation products may not be resold, modified for resale, or used to manufacture commercial products without written approval of Beijing Protein Innovation.

Beijing Protein Innovation Co.,Ltd. (BPI)

Add : B-8, Airport Industrial Zone, Beijing, 101318, China Tel: 86-10-80493132 Fax: 86-10-80485460 Email: bpi@genomics.org.cn  
www.proteomics.org.cn