

RiceAb

Anti-PR-6



CATALOG #

AbP80165-A-SE

SOURCE

Rabbit polyclonal antibody raised against synthetic peptide PR-6 as immunogen.

ANTIGEN

Synthetic peptide of PR-6 protein

BPI-Protein ID

#BPI-proteinI-0111706

Accession Number

PR-6 (AY878695)

APPLICATIONS

Anti-PR-6 can be used in western blot detection against rice tissues.

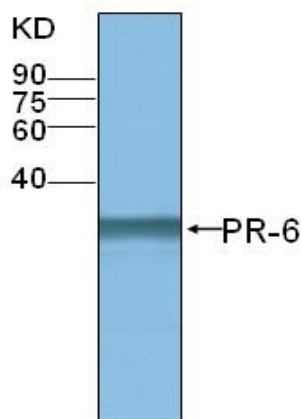
PRODUCT

Each vial contains 100µl serum.

STORAGE

The antibody may be stored at -20°C for one year in its original formulation. Additionally, antibody may be stored at 2°C to 8°C for up to 1 month without detectable loss of activity. **Avoid repeated freeze-thaw cycles of the diluted antibody.**

DATA



WB (1:100000) analysis of protein PR-6 expression in rice (CV. 9311) flag leaf at the filling stage with Anti-PR-6 (AbP80165-A-SE).

For Research Use Only This product is intended to be used for research purposes only. It is not to be used for drug or diagnostic purposes nor is it intended for human use. Beijing Protein Innovation products may not be resold, modified for resale, or used to manufacture commercial products without written approval of Beijing Protein Innovation.

Beijing Protein Innovation Co.,Ltd. (BPI)

Add : B-8, Airport Industrial Zone, Beijing, 101318, China Tel: 86-10-80493132 Fax: 86-10-80485460 Email: bpi@genomics.org.cn
www.proteomics.org.cn