

RiceAb Name: **Anti- PR-10a**



**CATALOG #**

AbP80167-A-SE

**SOURCE**

Rabbit polyclonal antibody raised against recombinant protein PR-10a as immunogen.

**ANTIGEN**

Recombinant protein corresponding to full length of PR-10a.

**Model\_MSU\_locus**

LOC\_Os12g36880.1

**APPLICATIONS**

Anti-PR-10a can be used in western blot detection against rice tissues.

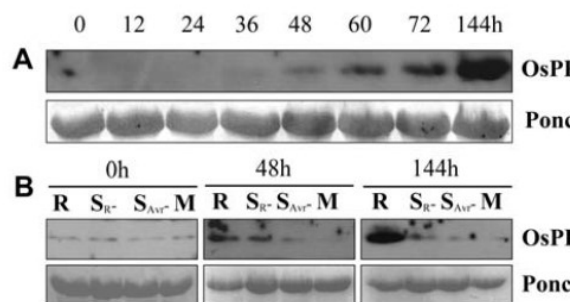
**PRODUCT**

Each vial contains 100µl serum.

**STORAGE**

The antibody may be stored at -20°C for one year in its original formulation. Additionally, antibody may be stored at 2°C to 8°C for up to 1 month without detectable loss of activity. **Avoid repeated freeze-thaw cycles of the diluted antibody.**

**DATA**



**Fig. 4.** Western blotting of OsPR10A protein expression. A. Upper panel, OsPR10A protein expression in rice tissues at the time points indicated. B. Upper

**Reference:** INDUCTION OF PATHOGENESIS-RELATED PROTEINS IN RICE BACTERIAL BLIGHT RESISTANT GENE XA21-MEDIATED INTERACTIONS WITH *XANTHOMONAS ORYZAE* pv. *ORYZAE*

**For Research Use Only** This product is intended to be used for research purposes only. It is not to be used for drug or diagnostic purposes nor is it intended for human use. Beijing Protein Innovation products may not be resold, modified for resale, or used to manufacture commercial products without written approval of Beijing Protein Innovation.