

RiceAb Name: *Anti-Os02g0537900 Protein Antibody*



CATALOG #

AbP80636-A-SE

SOURCE

Rabbit polyclonal antibody generated using synthetic peptide as immunogen.

ANTIGEN

Synthetic peptide of Os02g0537900 protein.

Model_MSU_locus

LOC_Os02g33490.1

APPLICATIONS

Anti-Os02g0537900 Protein Antibody can be used in western blot detection against rice tissues.

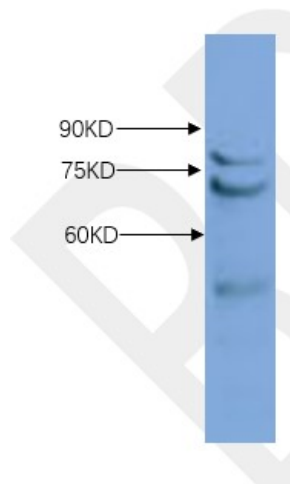
PRODUCT

Each vial contains 100µl serum.

STORAGE

The antibody may be stored at -20°C for one year in its original formulation. Additionally, antibody may be stored at 2°C to 8°C for up to 1 month without detectable loss of activity. **Avoid repeated freeze-thaw cycles of the diluted antibody.**

DATA



WB (1:1000) analysis of Os02g0537900 protein expression in rice (CV. 9311) seed at the maturing stage with Anti-Os02g0537900 Protein Antibody (AbP80636-A-SE).

For Research Use Only This product is intended to be used for research purposes only. It is not to be used for drug or diagnostic purposes nor is it intended for human use. Beijing Protein Innovation products may not be resold, modified for resale, or used to manufacture commercial products without written approval of Beijing Protein Innovation.