

**RiceAb Name:** *Anti-Os03g0158500 Protein Antibody*



**CATALOG #**

AbP80670-A-SE

**SOURCE**

Rabbit polyclonal antibody generated using synthetic peptide as immunogen.

**ANTIGEN**

Synthetic peptide of Os03g0158500 protein.

**Model\_MSU\_locus**

LOC\_Os03g06240.1

**APPLICATIONS**

Anti-Os03g0158500 Protein Antibody can be used in western blot detection against rice tissues.

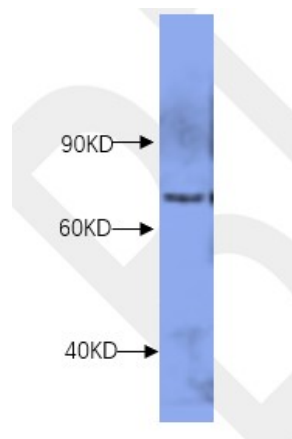
**PRODUCT**

Each vial contains 100µl serum.

**STORAGE**

The antibody may be stored at -20°C for one year in its original formulation. Additionally, antibody may be stored at 2°C to 8°C for up to 1 month without detectable loss of activity. **Avoid repeated freeze-thaw cycles of the diluted antibody.**

**DATA**



WB (1:500) analysis of Os03g0158500 protein expression in rice (CV. 9311) stem at the tillering stage with Anti-Os03g0158500 Protein Antibody (AbP80670-A-SE).

**For Research Use Only** This product is intended to be used for research purposes only. It is not to be used for drug or diagnostic purposes nor is it intended for human use. Beijing Protein Innovation products may not be resold, modified for resale, or used to manufacture commercial products without written approval of Beijing Protein Innovation.