

**RiceAb Name:** *Anti-Os05g0415800 Protein Antibody*



**CATALOG #**

AbP80787-A-SE

**SOURCE**

Rabbit polyclonal antibody generated using synthetic peptide as immunogen.

**ANTIGEN**

Synthetic peptide of Os05g0415800 protein.

**Model\_MSU\_locus**

LOC\_Os05g34325.1

**APPLICATIONS**

Anti-Os05g0415800 Protein Antibody can be used in western blot detection against rice tissues.

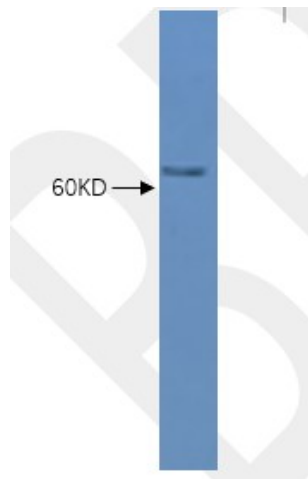
**PRODUCT**

Each vial contains 100µl serum.

**STORAGE**

The antibody may be stored at -20°C for one year in its original formulation. Additionally, antibody may be stored at 2°C to 8°C for up to 1 month without detectable loss of activity. **Avoid repeated freeze-thaw cycles of the diluted antibody.**

**DATA**



WB (1:1000) analysis of Os05g0415800 protein expression in rice (CV. 9311) flag leaf at the booting stage with Anti-Os05g0415800 Protein Antibody (AbP80787-A-SE).

**For Research Use Only** This product is intended to be used for research purposes only. It is not to be used for drug or diagnostic purposes nor is it intended for human use. Beijing Protein Innovation products may not be resold, modified for resale, or used to manufacture commercial products without written approval of Beijing Protein Innovation.