

产品尺寸及规格

✓ EE/EFD/EP Cores

Shape:

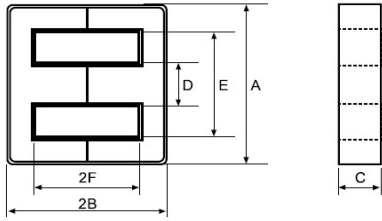
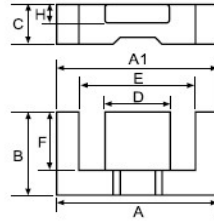


图 1 EE

Shape:

Type:1



Type:2

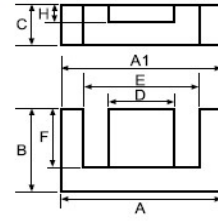


图 2 EFD

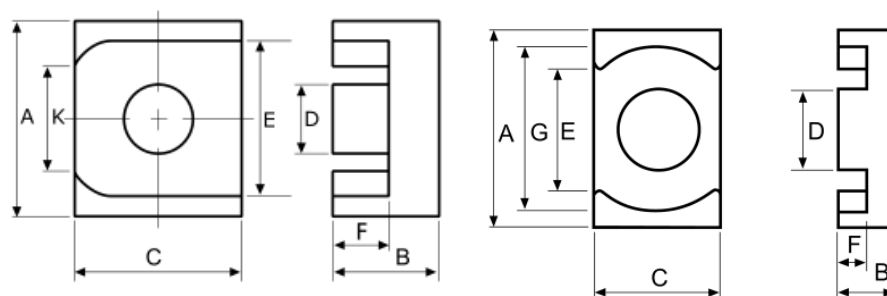
EE Cores

产品名称 Part number	A	B	C	D	E	F
EE5.0	5.25±0.10	2.66±0.10	1.95±0.05	1.35±0.05	3.80min	1.98±0.08
EE6.3	6.30±0.25	2.82±0.08	2.00±0.15	1.32±0.08	3.70±0.10	1.92±0.08
EE10	10.20±0.20	5.70±0.10	4.75±0.15	2.40±0.15	7.70min	4.20±0.15

产品名称 Part number	C1	le	Ae	Ve	wt (g/set)
EE5.0	4.70	12.5	2.66	33.3	0.17
EE6.3	3.64	12.13	3.33	40.39	0.28
EE10	2.13	26.0	12.0	323	1.6

产品名称 Part number	$A_L \pm 25\%$ (n H/ N ²)				$A_L \pm 30\%$ (n H/ N ²)
	IM2k3	IM2k4	IM5k	IM7k	IM10k
EE5.0	280	270	400	440	980min
EE6.3	370		560	620	1800
EE10	940	900	1500	1750	3100

ER core



TYPE 1

TYPE 2

产品名称 Part number	A	B	C	D	E	F	k	TYPE
ER14.5/11.3	14.50 ± 0.15	4.10 ± 0.10	11.30 ± 0.15	6.00 ± 0.12	12.20 ± 0.15	2.90 ± 0.10	8.30 ± 0.15	1
ER20/8.2	20.00 ± 0.250	8.20 ± 0.10	14.00 ± 0.25	8.80 ± 0.15	13.10 ± 0.25	6.00 ± 0.15	18.00 ± 0.2	2

产品名称 Part number	C1	le	Ae	Ve	wt (g/set)
ER14.5/11.3	0.70	20.14	28.55	574.10	3.50
ER20/8.2	0.60	29.02	48.38	1402.20	15.12

EFD Cores

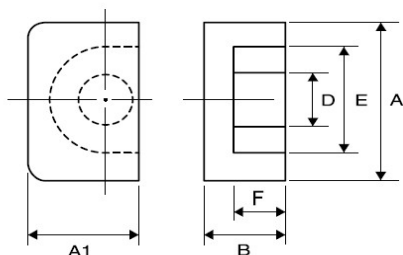
产品名称 Part number	A	B	C	D	E	F	H	A1-A
EFD9.5	9.60±0.15	4.60±0.10	2.20±0.10	4.00±0.10	7.35±0.15	3.00±0.10	1.15±0.10	≤ 0.13mm
EFD10.7	10.70±0.20	6.50±0.10	3.50±0.15	3.20±0.10	8.30±0.15	5.15±0.10	1.50±0.10	
EFD12	12.50±0.30	6.20±0.10	3.50±0.10	5.40±0.15	9.00±0.25	4.55±0.15	2.00±0.10	≤ 0.20mm

产品名称 Part number	C1	le	Ae	Ve	wt (g/set)
EFD9.5	4.06	20.10	4.80	97.50	0.56
EFD10.7	4.87	28.02	5.75	161.12	1.14
EFD12	2.59	27.42	10.55	289.20	1.62

产品名称 Part number	$A_L \pm 25\%$ (n H/ N ²)				$A_L \pm 30\%$ (n H/ N ²)
	IM2k3	IM2k4	IM5k	IM7k	IM10k
EFD9.5	460				
EFD10.7				800	1900
EFD12	850	820			

EP Cores

Shape:

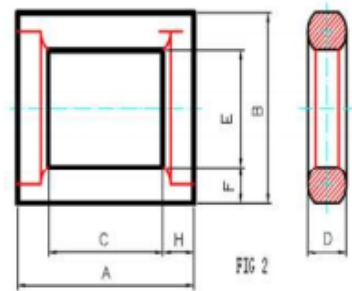


产品名称 Part number	A	B	A1	D	E	F
EP5	6.00 ± 0.15	3.80 ± 0.10	2.80 ± 0.05	1.70 ± 0.10	4.40 ± 0.15	2.00 ± 0.10
EP7	9.20 ± 0.20	6.35 ± 0.15	3.75	3.30 ± 0.10	7.40 ± 0.20	2.60 ± 0.10
EP7-1	9.20 ± 0.20	6.35 ± 0.15	4.75 ± 0.05	3.30 ± 0.10	7.40 ± 0.20	3.60 ± 0.10

产品名称 Part number	C1	le	Ae	Ve	Wt(g/set)
EP5	3.20	9.70	3.00	28.70	0.46
EP7	1.52	15.70	10.30	162.00	1.42
EP7-1	1.68	17.96	10.66	191.45	1.42

产品名称 Part number	$A_L \pm 25\%$ (n H/ N ²)				$A_L \pm 30\%$ (n H/ N ²)
	IM2k3	IM2k4	IM5k	IM7k	IM10k
EP5	400				1900
EP7	1100		3500		5200
EP7-1					1980

SQ Cores



产品名称 Part number	A	B	C	D	E	F	H	Wt(g/set)
SQ15	15.2±0.4	15.2±.4	11.0±0.3	5.1±.3	5.9±0.3	4.7±0.2	2.1±.2	3.6
SQ19	19.0±0.4	18.3±.4	14.0±0.3	5.5±.2	8.22±0.3	5.04±0.2	2.5±0.2	5.2
SQ20	20.6±0.3	14.1± 0.3	15.7Min	4.6±0.3	7.5Min	4.1±.2	2.4±.2	3.7
SQ23	22.8±0.4	18.1± 0.4	14.8±0.3	5.0±0.2	9.1±.3	4.5±0.25	4.0±.2	4.8
SQ24	24.0±.2	17.5± 0.2	20.0±0.2	6.0±.2	6.5±0.2	5.5±.2	2.0±0.2	7.4
SQ30	30.0±.4	19.8± 0.3	22.6Min	6.4±0.2	9.0Min	6.4±0.2	2.4±0.2	10.5

产品名称 Part number	$A_L \pm 30\%$ (n H/ N ²)				C1	<i>le</i>	Ae	Ve
	IM5K	IM7K	IM10K	IM12K	(mm ⁻¹)	(mm)	(mm ²)	(mm ³)
SQ15	2200	3200	4600	5600	2.64	39.37	14.88	585.8
SQ19	2000	2800	4200	5040	2.71	51.72	19.07	986.2
SQ20	1500	2100	3000	3600	4.27	54.32	12.72	691.2
SQ23	2200	3000	4400	5000	2.85	60.99	21.37	1303.4
SQ24	2200	3000	4400	5200	2.88	53.18	18.43	980.2
SQ30	2280	3200	4600	5400	2.74	75.21	27.39	2060