

履带钢形状及尺寸示意图

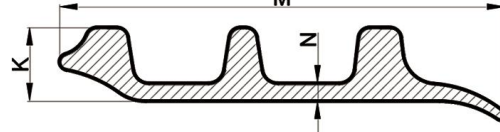
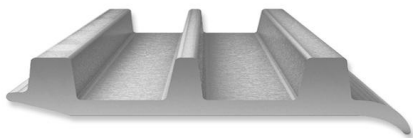
Shape and dimensions of track shoes for excavator

产品参数

PRODUCT PARAMETERS

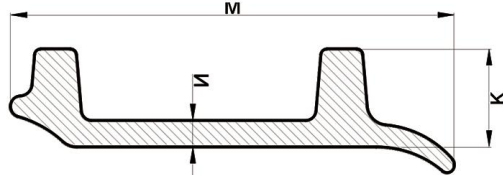
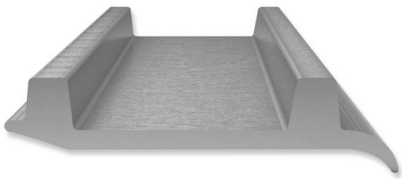
□ 热轧履带钢（挖掘机用履带钢） Hot-rolled Track Shoes For Excavator

型号 Type	公称尺寸Nominal Dimensions(mm)			理论重量 Mass/Unit Length (kg/m)
	M	K	N	
L3W-135×6×14	154	20	6	10.86
L3W-135×7×14	154	21	7	12.07
L3W-140×8.5×18	163	26.5	8.5	16.64
L3W-154×6×20	165	26	6	14.43
L3W-154×8×20	165	28	8	16.78
L3W-170.7×8×25	198.9	33	8	22.82
L3W-170.7×8.5×25	198.9	33.5	8.5	23.60
L3W-170.7×9.5×25	198.9	34.5	9.5	25.16
L3W-170.7×10×25	198.9	35	10	25.94
L3W-170.7×10.5×25	198.9	35.5	10.5	26.73
L3W-170.7×12×26A	198.9	38	12	28.88
L3W-171.5×8×20	190	28	8	19.05
L3W-171.5×9.5×20	190	29.5	9.5	21.29
L3W-187.9×10×26	217.5	36	10	28.89
L3W-187.9×12.5×26	217.5	38.5	12.5	33.16
L3W-190×8×26	219	34	8	24.76
L3W-190×8.5×26	219	34.5	8.5	25.60



履带钢形状及尺寸示意图
Shape and dimensions of track shoes for excavator

型号 Type	公称尺寸Nominal Dimensions(mm)			理论重量 Mass/Unit Length (kg/m)
	M	K	N	
L3W-190×10×26	219	36	10	28.13
L3W-190×12×26A	219	38	12	31.59
L3W-190×12×26B	219	38	12	31.33
L3W-190×12.5×28	222	40.5	12.5	33.5
L3W-203×11×28A	236	39	11	33.50
L3W-203×11×28B	236	39	11	32.50
L3W-203×13×28A	236	41	13	37.07
L3W-203×13×28B	236	41	13	36.18
L3W-204.7×11×26	232.5	37	11	33.64
L3W-216×11×30A	247	41	11	35.24
L3W-216×11×30B	250	41	11	35.45
L3W-216×13×30	250	43	13	39.33
L3W-216×14×30	247	44	14	41.05
L3W-216×15.5×34	254.5	49.5	15.5	48.02
L3W-216.4×13×36	247	49	13	42.82
L3W-216.4×16×36	247	52	16	48.64
L3W-216.4×18×36	247	54	18	52.52



履带钢形状及尺寸示意图

Shape and dimensions of track shoes for excavator

产品参数

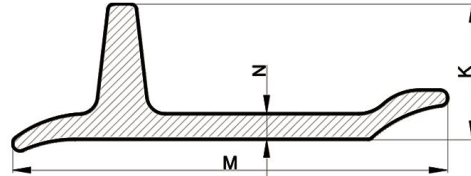
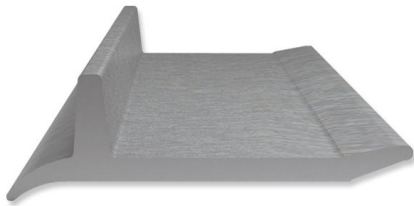
PRODUCT PARAMETERS

□ 热轧履带钢（挖掘机用履带钢） Hot-rolled Track Shoes For Excavator

型号 Type	公称尺寸Nominal Dimensions(mm)			理论重量 Mass/Unit Length (kg/m)
	M	K	N	
L2W-190.5 × 13 × 35	217	48	13	33.04
L2W-216 × 15.5 × 49A	251	64.5	15.5	49.93
L2W-216 × 15.5 × 49B	251	64.5	15.5	50.17
L2W-216 × 15.5 × 49C	251	64.5	15.5	49.57
L2W-260 × 21 × 50	302	71	21	73.11
L2W-260 × 23.5 × 50	302	73.5	23.5	79.04

注：上表列出了常规生产履带钢部分的尺寸偏差范围。实际生产中，产品尺寸偏差控制按照附录中各个规格品种成品图纸标注的公差范围要求执行。特殊厚度要求敬请垂询我公司。

Notes: The table above is tolerances of normal track shoes. In actual manufacture, tolerances are controlled according to the tolerances annotated in the drawings of all specifications in the appendix. Please inquire us for special requirements of thickness.



推土机履带钢形状及尺寸示意图

Shape and dimensions of track shoes for bulldozer

产品参数

PRODUCT PARAMETERS

□ 热轧履带钢（推土机用履带钢） Hot-rolled Track Shoes For Bulldozer

型号 Type	公称尺寸Nominal Dimensions(mm)			理论重量 Mass/Unit Length (kg/m)
		K	N	
260	305	/	20.5	73.51
228	268	97	17	50.60
216	252.3	86.3	14.3	40.80
203	238	74	14	35.25
190	212	/	13.5	28.80
171	199.6	62	12	26.11

注：特殊厚度要求敬请垂询我公司。

Note: Please inquire us for special requirements of thinckness.