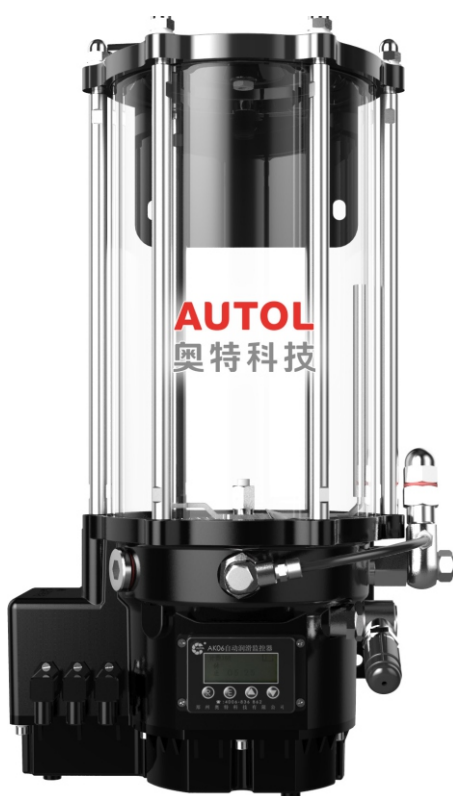
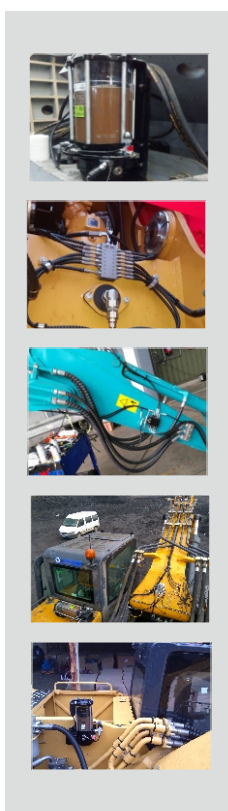


# **AUTOL** 奥特

Efficiency makes life better

Application of Autol centralized lubrication system  
in earthmoving industrial

## **-ALP80/100/120 Series Product**



- Save money
- Save time
- effort
- Security



# About AUTOL

## The Values of Autol ACLS Solutions brings to you

- Increase the lifetime of core parts , system and maintenance intervals. reduce the cost of maintenance;
- Intelligent remote lubrication monitor ,know the lubrication status at real-time;

### >> Save cost

Take SANY750 as an example (Standard bucket 2.5 cubic meter)

	Improve Efficiency
Manual lubricating	Lubricate twice cost 1hours by Man
Automatic lubricating	Save 40 mins/day $12(\text{bucket/hour}) * 4.2(\text{cubic meter}) * 0.6\text{h} = 30\text{cubic meters/day}$ $30(\text{cubic meter/day}) * 1.6(\text{USD/cubic meter}) = 48\text{USD/day}$ $48\text{USD/day} * 360\text{days} = 17280\text{USD/day}$

	Average cost By man ( USD/year)	Grease Cost ( USD/ year)
Manual lubricating	-	1764
Automatic lubricating	1323	1411
Cost saved /year	1323	353
Intotal cost saved /year	1676	

### >> Save Labour

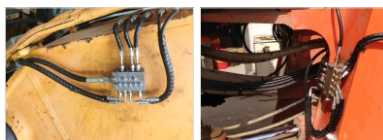
As the data displayed on SANY excavator : working 20hours every day , greasing 2times , cost one hour,largely reduce the work of the operator, relalizing fixed point lubricating by fixed quantity at real-time

### >> Safe

- 1.No need labor climb the excavator to greasing , ensuring the safe of the labor
- 2.Fixed point , fixed quantity , real-time lubricating , ensure the safe operating of the equipment .



The installation location  
of Lubrication pump



The installation location  
of distributor



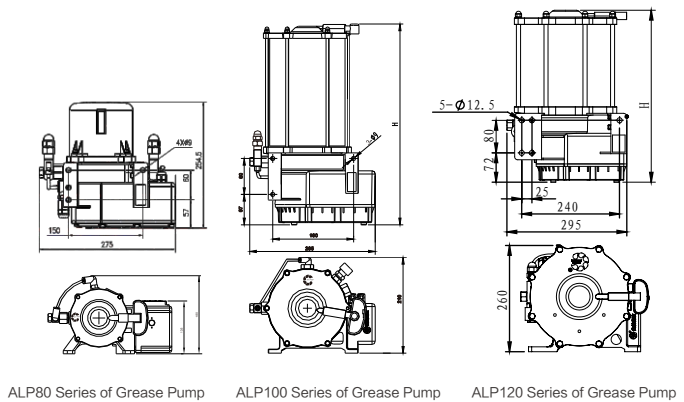
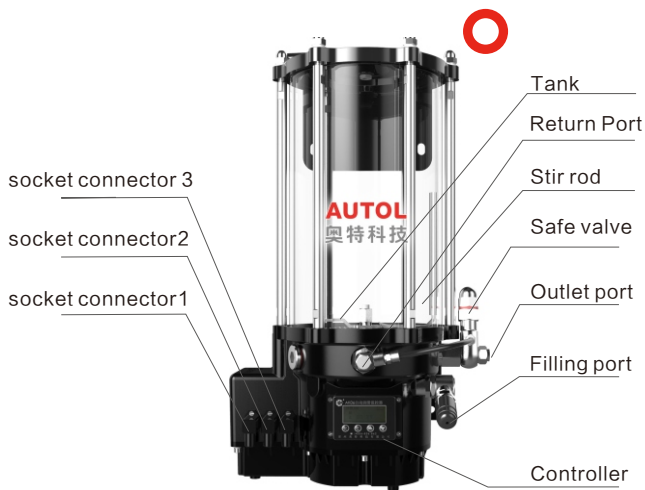
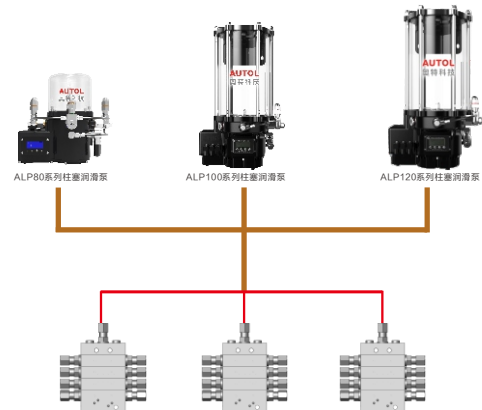
The installation location  
of tube and wire harness

# Progressive centralized lubrication system

The progressive centralized lubrication system is designed with LED control and monitoring and working cyclically. After the amount is fixed by the single-low and single-line distributor, the grease supplied by the grease pump is delivered to all the lube points.

NLGI-0, NLGI-1, NLGI-2 grease available.

It applies to mechanical equipment for construction machinery, metallurgy, harbor, wharf, ship, crane, woodworking, food, construction project, etc.



Model	Capacity	Height
ALP80	1L	254.5mm
	2L	378mm
ALP100	2L	335mm
	4L	485mm
	6L	585mm
	8L	685mm
ALP120	4L	428mm
	8L	533mm
	10L	596mm
	15L	716mm
	20L	848mm
Technical Data	Control mode	Built-in/external monitor
	Working time	1~99min
	Normal fluid	1.5/2.5/4.5/6.5 ml/min
	Max pressure	35MPa
	Motor	24VDC 30W
	Grease	NLGI-0#、1#、2#
	Temperature	-40℃~70℃

## Structure Advantage:

- Adopting germany reducer motor and simple supported beam structure . Good reliability , High lifetime.
- Lightweight design , the miniaturization eccentric wheel assembly and column makes the weight of the pump lessen% than the first generation ALP100
- Using Deep groove ball bearings transmit radial loads, the rotating noise lower than 50 decible , small electrical current
- Four plungers can connect with 4 distributors , reducing the grease deposition and metamorphism of the grease in the tube , More stability .

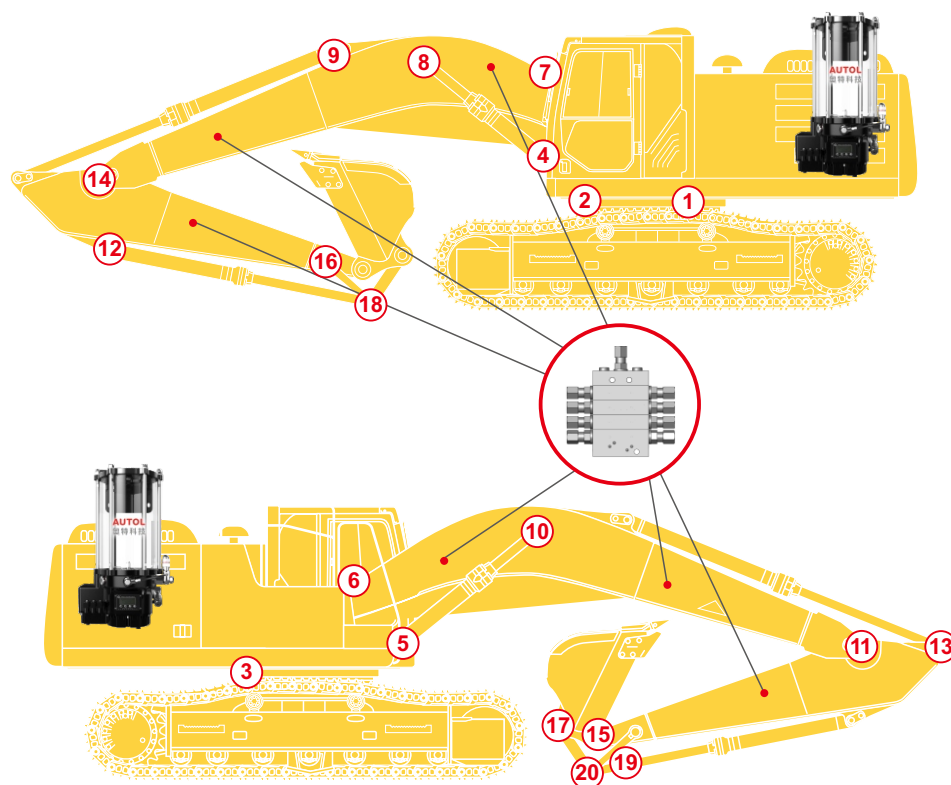
## Technology Feature:

- Patent of anti soaking technology to make sure the system proper functioning in the lowland flooding environment
- Initiate Patent of intelligent temperature controller technique, breakthrough application problem in extremely low temperature
- Matching with automatic grease feeder, save time and money
- Working temperature : -40℃ to 70℃

Note: please use reasonable the same grade low temperature grease in Cold temperature

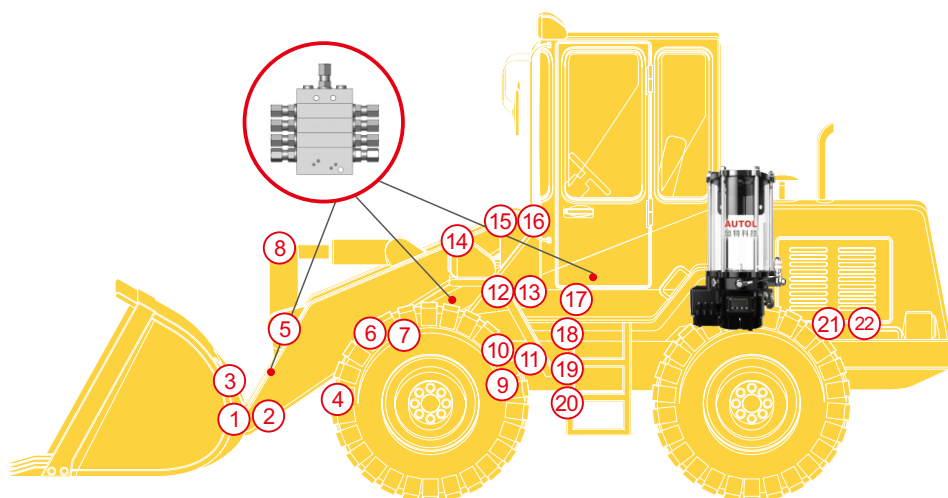
# Progressive centralized lubrication system

## Lubrication point name of excavator



Item	Name
1、 2、 3	Slewing support
4	Left arm cyclinder root
5	Right arm cyclinder root
6	Right arm cyclinder head
7	left arm cyclinder head
8	Left arm cyclinder head
9	Left boom cyclinder
10	Bucket arm cyclinder
11	Right boom cyclinder
12	Right bucket root
13	Bucket cyclinder
14	Bucket arm
15	Left bucket arm root
16	Bucket arm
17	Bucket connecting rod lower
18	Leftbucket connecting rod upper
19	Bucket connecting rod
20	Right bucket connecting upper

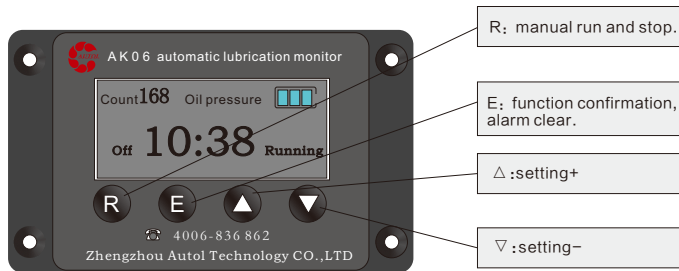
## Lubrication point name of loader



Item	ube point name
1	Bucket left bearing end
2	Bucket right bearing end
3	Connecting rod front lube point
4	Connecting rod rear lube point
5	Rocker atm middle bearing end
6	Right boom cyclinder supporting
7	Left boom cyclinder supporting
8	Rocker armupper bearing end
9	Drive axle
10、 12	Right steering cyclinder bearing end
11、 13	Left steering cyclinder bearing end
14	Steering cyclinder bearing end
15	Left Boom bearing end
16	Right Boom bearing end
17	Carframe upper connecting bearing end
18	Left steering cyclinder bearing end
19	Right steering cyclinder bearing end
20	Carframe Lower connecting bearing end
21	Rear axle front lubrication point
22	Rear axle back lubrication point

# Accessories

## Monitor



### Precaution:

Press "△" and "▽" together for over 4 seconds, then press "E" and enter into setting interface. It will lock automatically when exit.

Press "E" again and again and select "1P,2P,3P,4P" separately, then confirm

1P: Press "△" or "▽" adjust pause interval (1~30hours);

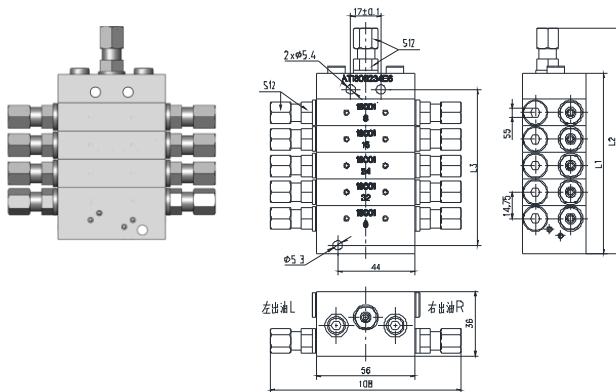
2P: Press "△" and "▽" detect the pulse(0~99mins)

3P: Press "△" and "▽" Running time (1~99min) ;

4P: Press "△" and "▽" Low temperature standby temperature (-50℃~0℃).

Press E enter into domant state

## Chip progressive distributo



● JPQ1 chip progressive distributor consist of one start piece(no piston),one end piece(with piston)and 2~7middle chips (with piston ).They are combined together to one unit by screw bolts to realize the grease distribution;

● Each chip can be designed with different output , 0.08mL/cy、 0.16mL/cy、 0.24mL/cy、 0.32mL/cy、 0.8mL/cy、 1.04mL/cy、 1.28mL/cy、 1.6mL/cy. If need other output , it will be realized by chips overlay;

● If one chip meet fault , directly change the fault one;

● If add the lubrication points , adding chips will be ok;

● More convience for maintenance and clearance.

## DC-801 Refuelling machine



DC-801 refueling machine consists of planetary reducer, eccentric drive, piston and check valve seal structure. the structure with easy principle , reliable performance, convinent maintenance.

### Parameter

Pressure:DC24V

Output power:300W

Max output pressure:40MPa

Max output flow:350g/min

Weight:8.5kg

Grease:NLGI-0#、 1#、 2#

# Exported to more than 40 countries and area



China's Leading Brand on Centralized Lubrication Solutions



Nine Professional Testing Laboratories



Exported to more than 40 countries and area



R&D Professional Engineers more than 85 from worldwide



More than 100 declared technical patents



More than 500,000 sets of lubrication equipment at running

## Zhengzhou Autol Technology Co., Ltd.

Tel: +86-371-8625 8298 Fax: +86-371-8625 8298  
E-mail: [info@autol.net](mailto:info@autol.net) Web: [www.autol.net](http://www.autol.net) [www.autolgroup.com](http://www.autolgroup.com)  
Add: No. 96, Hewan Street, New Hi-tech Zone, Zhengzhou, PRC

Hotline nationwide: +86-400-6836-862

