



The Installation Case Portfolio of Centralized Lubrication System

Zhengzhou Autol Technology Co., Ltd.

Tel: +86-371-8625 8298 Fax: +86-371-8625 8298
E-mail: info@autol.net Web: www.autol.net www.autolgroup.com
Add: No. 96, Hehuan Street, New Hi-tech Zone, Zhengzhou, PRC

Hotline nationwide: +86-400-6836-862

The Installation Case of Vehicle CLS



CLS for Yutong Bus

Manufacturer:Yutong
Type of Distributor:single-row single-line
Number :2
Installation Date: 2017.10.13

Vehicle:Yutong bus
Type of Lubrication pump :AR60H
Lube points :8



CLS for Zhongtong Bus

Manufacturer:Zhongtong
Type of Distributor:single-row single-line
Number :2
Installation Date: 2018.8

Vehicle: Zhongtong LCK6109052
Type of Lubrication pump :AR60
Lube points : 15



CLS for Yutong Bus

Manufacturer:Yutong
Type of Distributor:single-row single-line
Number :2
Installation Date: 2018.6

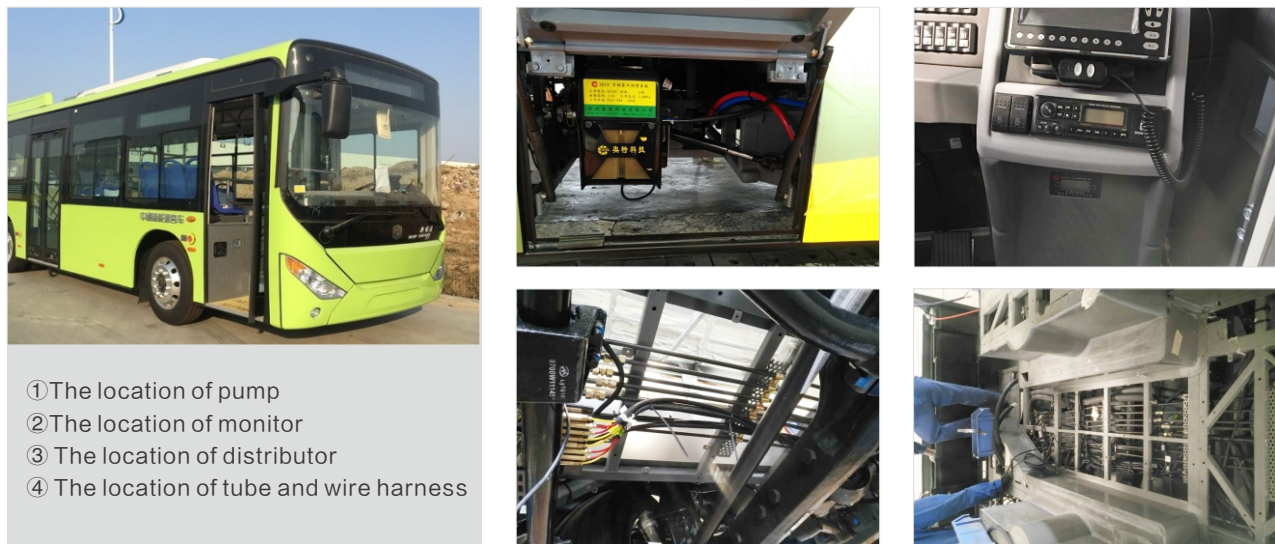
Vehicle:Yutong bus
Type of Lubrication pump :AR60H
Lube points :8



CLS for Zhongtong Bus

Manufacturer:Zhongtong
Type of Distributor:single-row single-line
Number :1
Installation Date: 2017.10.13

Vehicle: Zhongtong LCK6109052
Type of Lubrication pump :AR60H
Lube points : 8



CLS for Gold Dragon Bus

Manufacturer:Gold Dragon

Type of Distributor:single-row single-line

Number:2

Installation Date:2018.6

Vehicle:Gold Dragon Bus

Type of Lubrication pump:AR60

Lube points:8



CLS for Gold Dragon Bus

Manufacturer:Gold Dragon

Type of Distributor:single-row single-line

Number:2

Installation Date: 2017.8

Vehicle:King Long 6125

Type of Lubrication pump:AR60H

Lube points:20



CLS for CRRC

Manufacturer:CRRC

Type of Distributor:single-row single-line

Number :2

Installation Date: 2018.9

Vehicle:Zhongche Bus

Type of Lubrication pump :AR60H

Lube points :12



CLS for Gold Dragon Bus

Manufacturer:Gold Dragon

Type of Distributor:single-row single-line

Number:2

Installation Date: 2017.8

Vehicle:King Long 6106

Type of Lubrication pump:AR60H

Lube points:20



CLS for BYD Bus

Manufacturer:BYD
Type of Distributor:single-row single-line
Number:2
Installation Date:2018.8

Vehicle:BYD K8
Type of Lubrication pump:ALP50
Lube points:12



CLS for BYD Bus

Manufacturer:BYD
Type of Distributor:single-row single-line
Number:2
Installation Date:2018.8

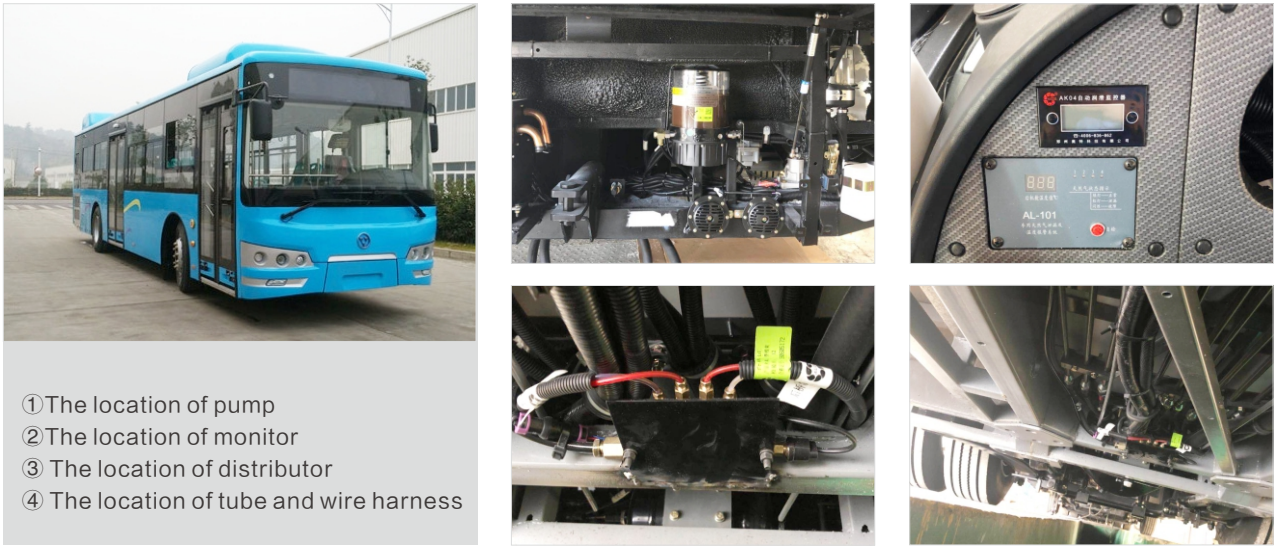
Vehicle:BYD GZ6100LGEV5
Type of Lubrication pump:ALP50
Lube points:12



CLS for Chery Wanda Bus

Manufacturer:Chery Wanda
Type of Distributor:single-row single-line
Number:2
Installation Date:2018.8

Vehicle: Chery Wanda WD6125EHEV2
Type of Lubrication pump:AR60H
Lube points:10



CLS for Ankai Bus

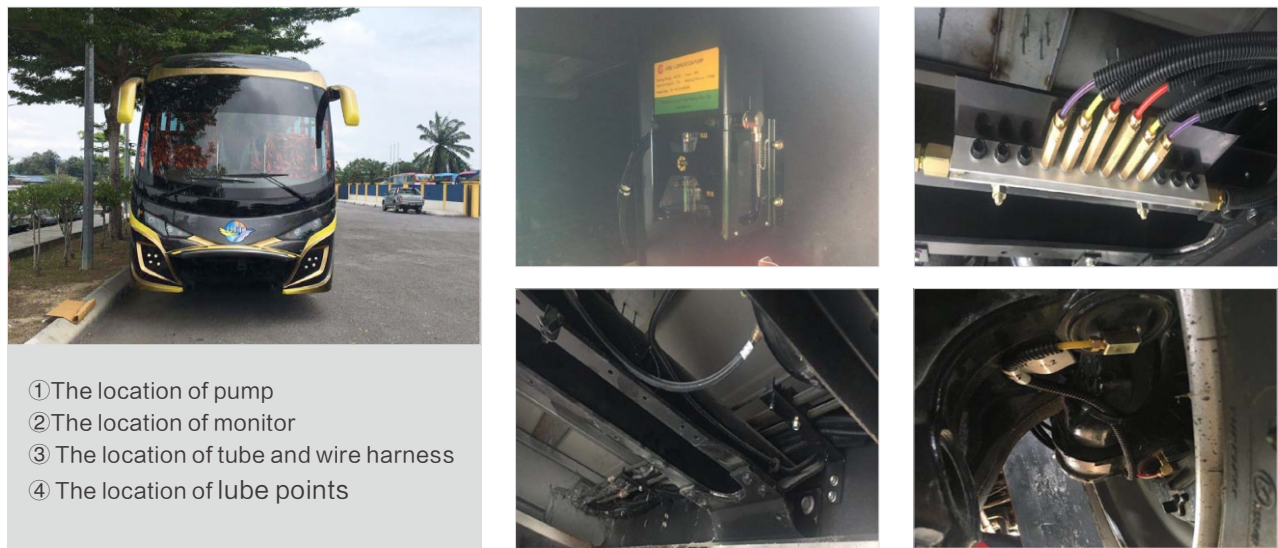
Manufacturer:Ankai
Type of Distributor:single-row single-line
Number:2
Installation Date:2017.8

Vehicle:Ankai Bus
Type of Lubrication pump:ALP502H
Lube points:20



CLS of Malaysia Kuala Lumpur Bus

Type of Distributor:single-row single-line Vehicle: Bus
Number:2 Type of Lubrication pump: AR60
Installation Date:2018.6 Lube points: 21

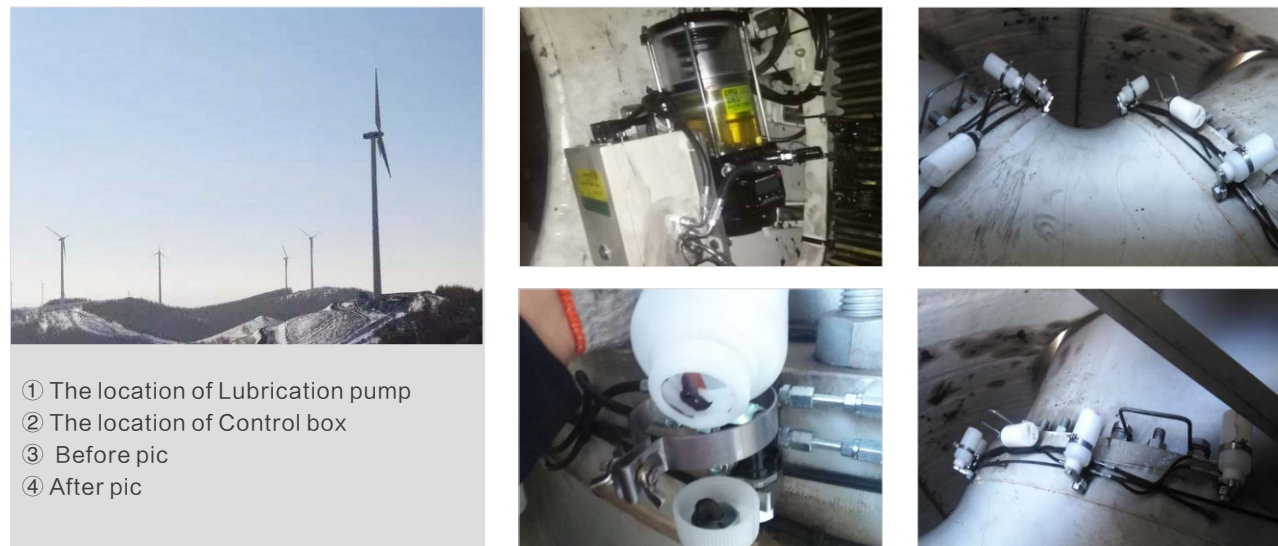


The Installation Case of CLS and WGCS in Wind Turbines

WGCS of Shanghai Electric(1)

Manufacturer:Shanghai Electric
Wind turbine :2.0MW
Installation Date: 2016.3

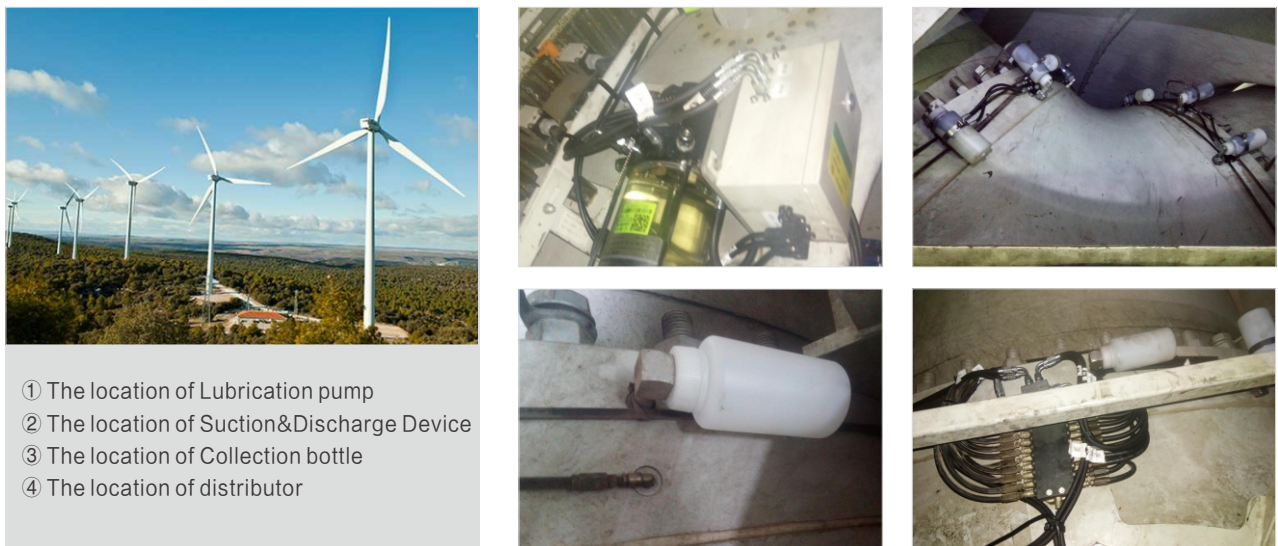
Lubrication parts: Pitch
Lubrication pump: ALP702w
Suction & Discharge Device: 30



WGCS of Shanghai Electric(2)

Manufacturer:Shanghai Electric
Wind turbine :2.0MW
Installation Date: 2016.3.15

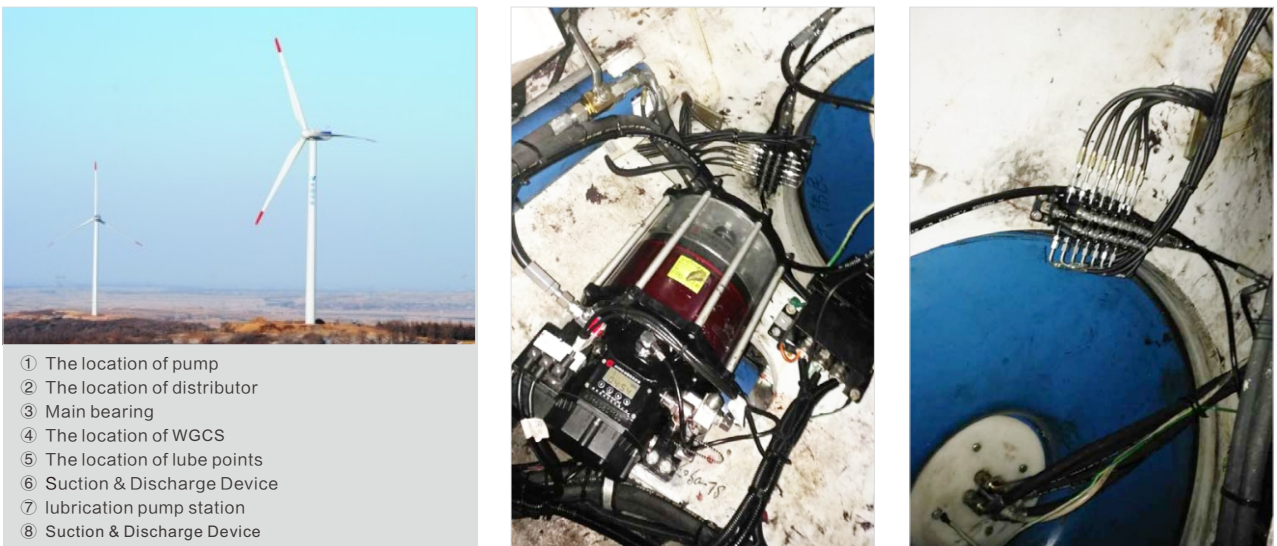
Lubrication parts: Main bearing
Lubrication pump: ALP702w
Suction & Discharge Device: 30



CLS and WGCS of Shanghai Electric(3)

Manufacturer:Shanghai Electric
Wind turbine : 1.25MW
Installation Date: 2016.9

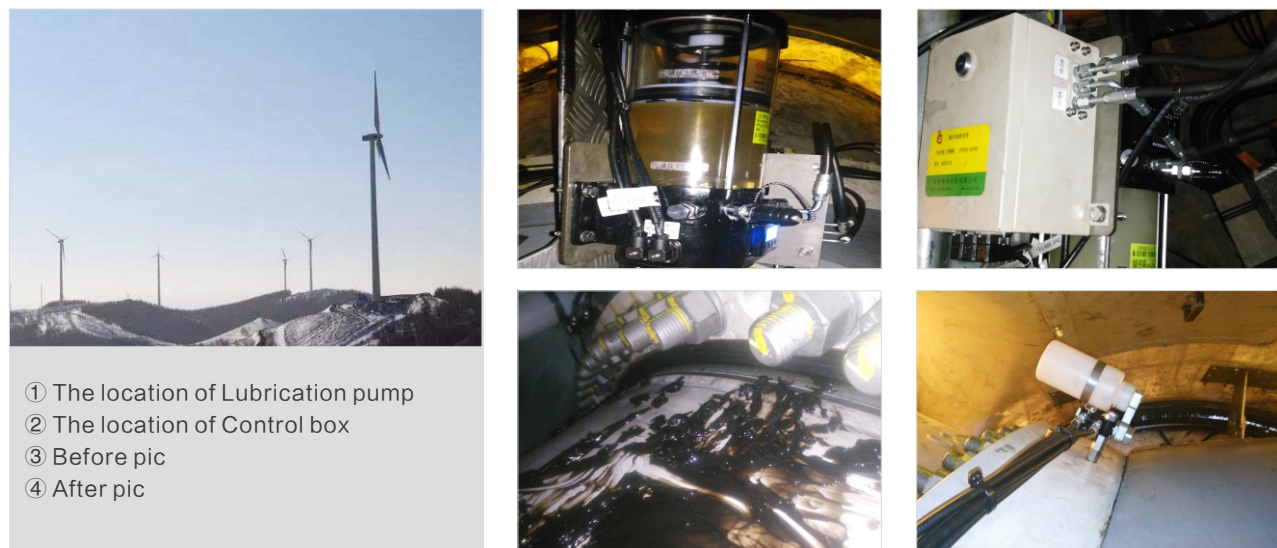
Lubrication parts: Pitch and Main bearing
Type of Distributor: Single-line Distributor
Lubrication pump: ALP1224/ALP1024/ALP702w



WGCS of Gamesa(1)

Manufacturer:Gamesa
Wind turbine :G90
Installation Date: 2017.3

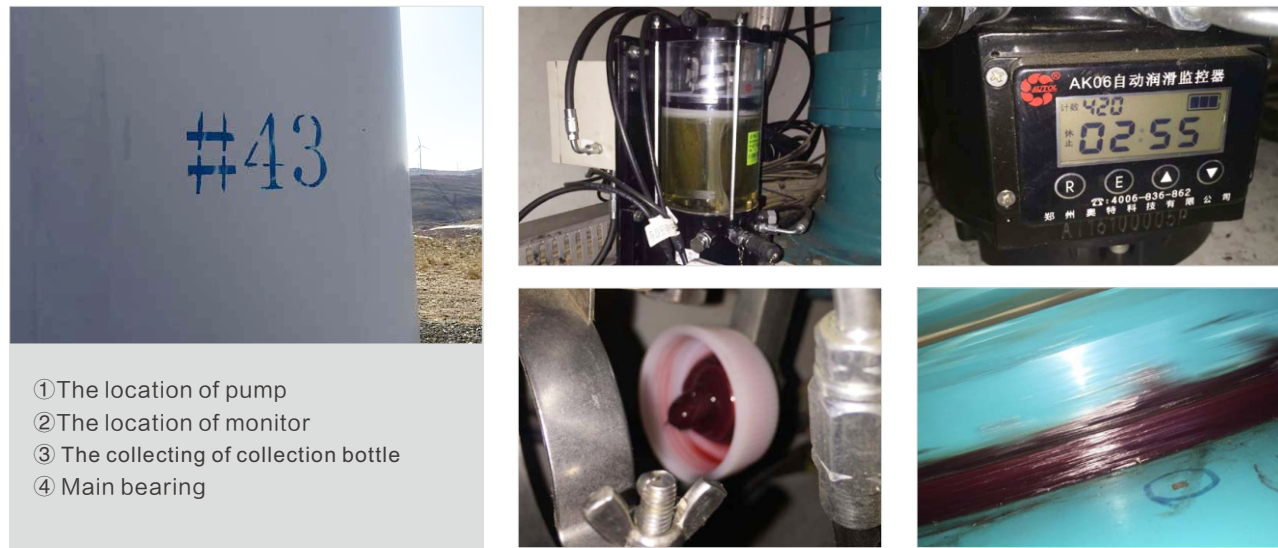
Lubrication parts : Pitch
Lubrication pump: ALP702w
Suction & Discharge Device: 27



WGCS of SUZLON

Manufacturer:SUZLON
Wind turbine :1.25MW
Installation Date: 2017.3

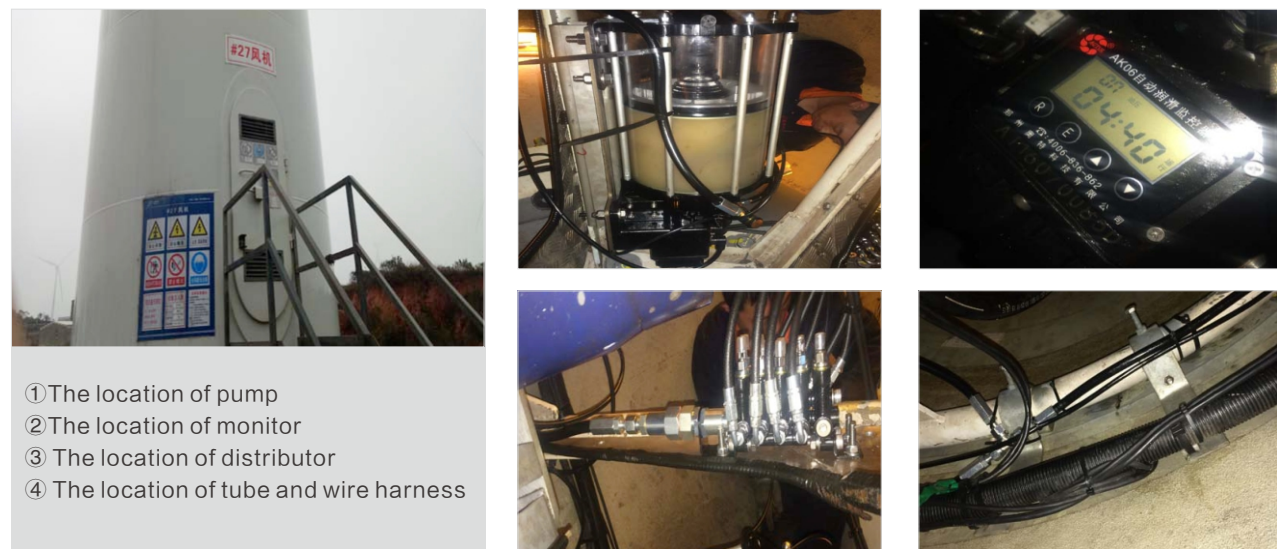
Lubrication parts : Main bearing
Lubrication pump: ALP702w
Suction & Discharge Device: 27



WGCS of Gamesa(2)

Manufacturer:Gamesa
Wind turbine:2.0MW
Installation Date:2017.3

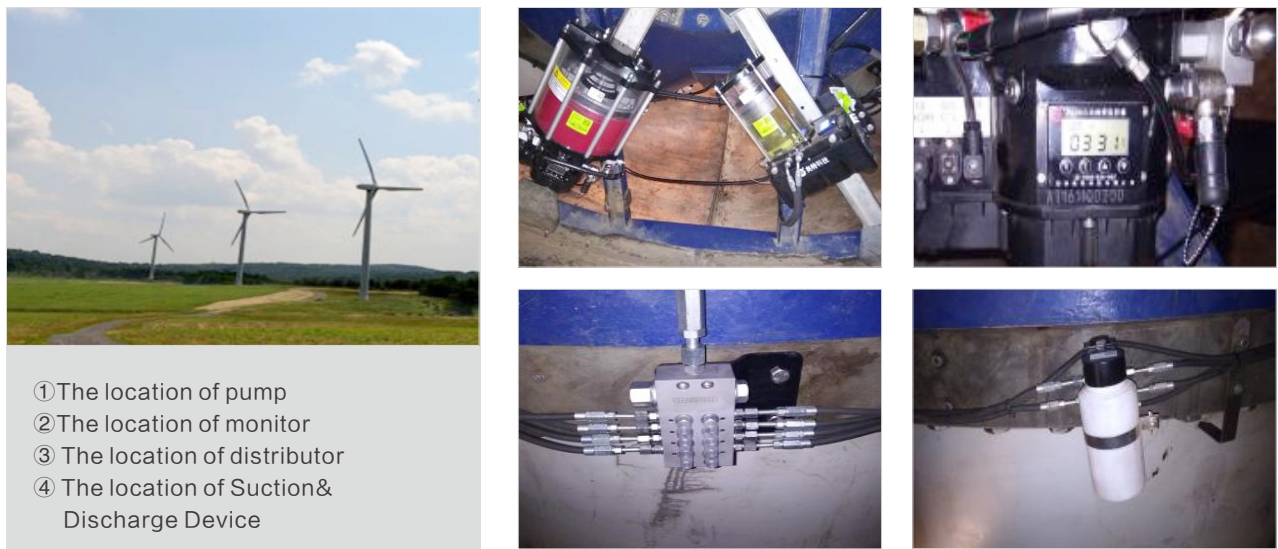
Lubrication parts : Pitch
Lubrication pump: ALP1228
Suction & Discharge Device: 27



CLS and WGCS of Mingyang electric wind power

Manufacturer:Mingyang electric
Wind turbine:MY1.5se
Installation Date:2016.10

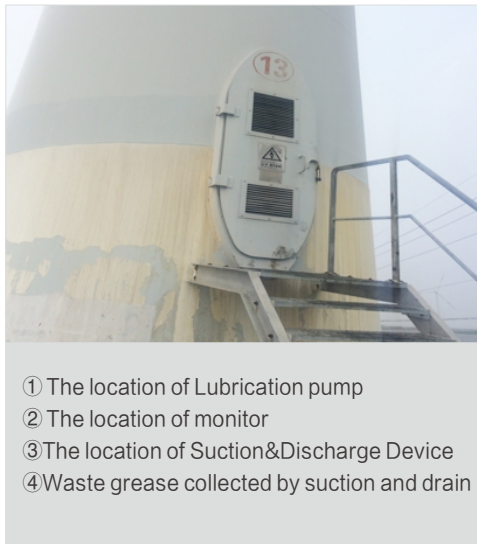
Lubrication parts : Pitch
Lubrication pump: ALP702w
Suction & Discharge Device:21



WGCS of CSIC

Manufacturer :CSIC
Wind turbine :2.0MW
Installation Date: 2016.10

Lubrication parts: Pitch and Main bearing
Lubrication pump: ALP702w
Suction & Discharge Device: 21



CLS and WGCS of Goldwind

Manufacturer:Goldwind
Wind turbine :1.5MW
Suction & Discharge Device: 12
Installation Date: 2018.7.16

Lubrication parts:Pitch
Lubrication pump: ALP1024、APP502w
Lube points:36

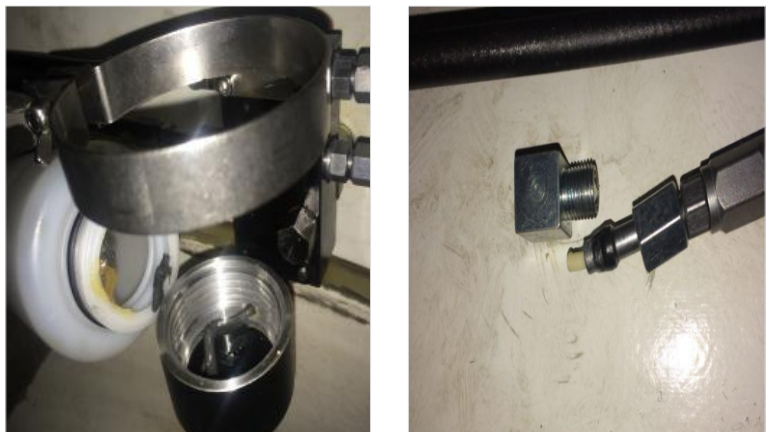
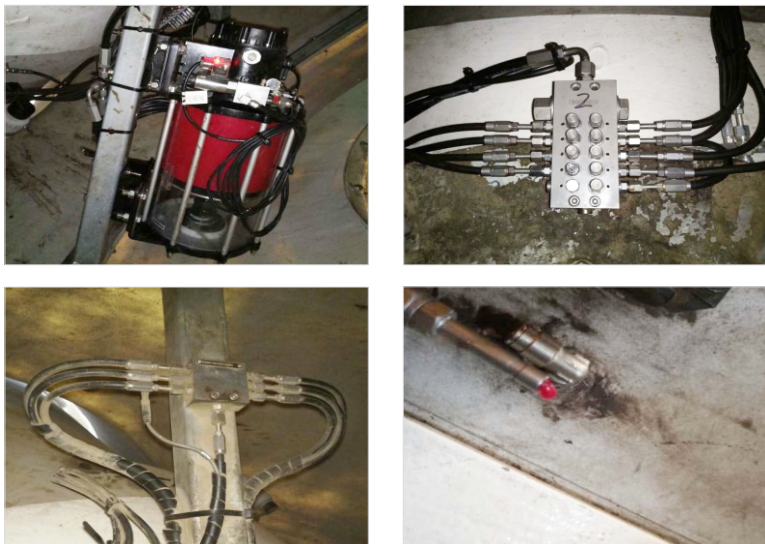
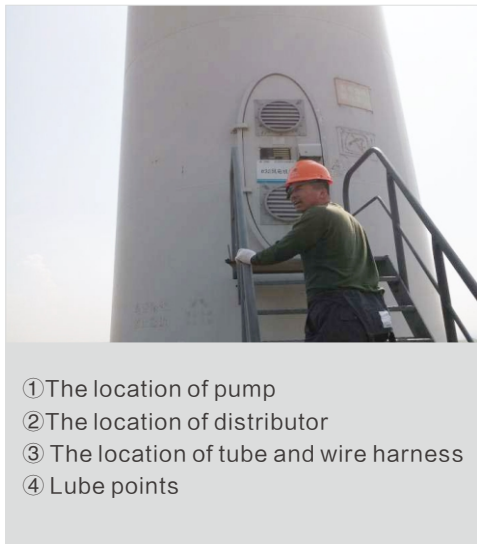
Type of Distributor:
Single-line Distributor
Number of Distributor: 3



CLS of The united power

Manufacturer :The united power
Wind turbine:1.5MW
Type of Distributor: Single-line Distributor
Installation Date: 2018.6.8

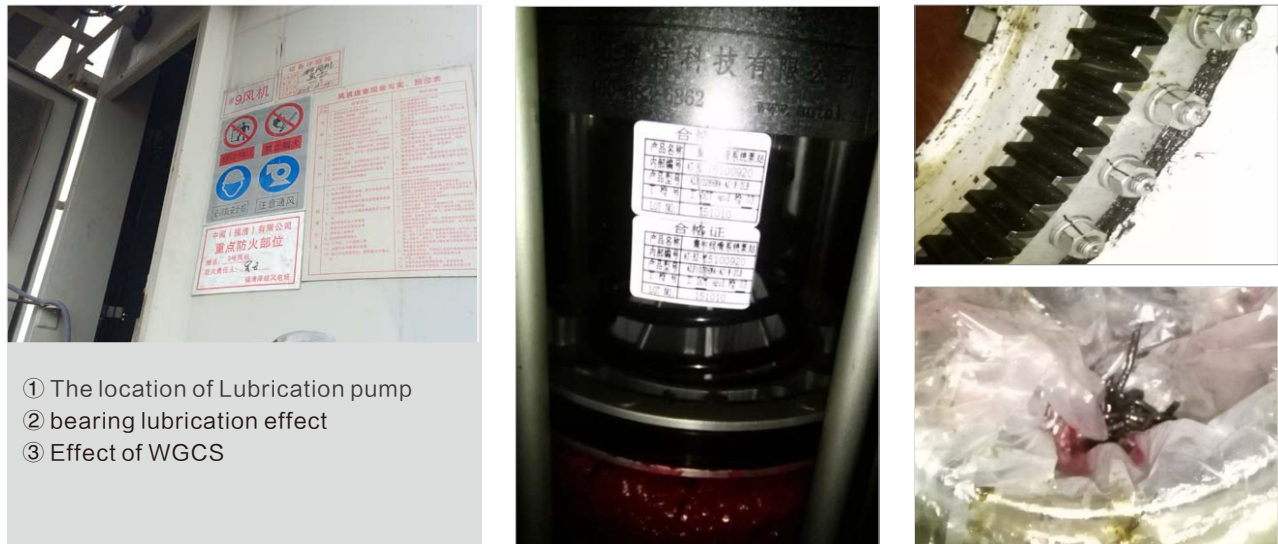
Lubrication parts:blade bearing & gear
Lubrication pump:ALP1228
Lube points:24



CLS and WGCS of XEMC

Manufacturer: XEMC
Wind turbine: XE82
Installation Date: 2017.6.12

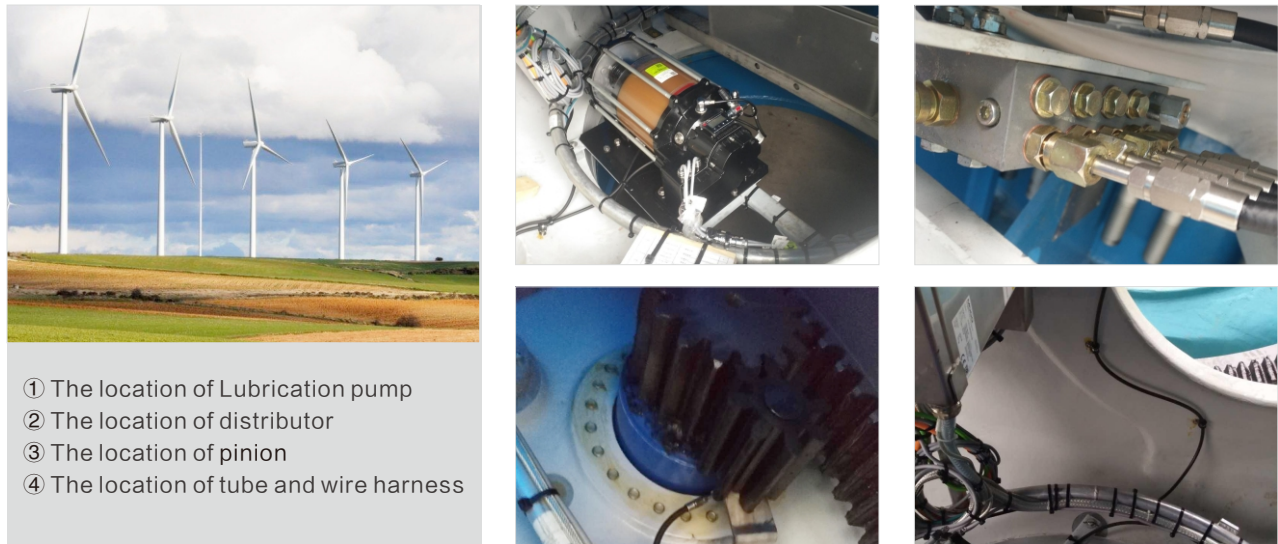
Lubrication parts: blade bearing /gear
Type of Lubrication: ALP702W/ALP1028
Lube points: 27



CLS of Vision energy(1)

Manufacturer: Vision energy
Wind turbine: 2.5MW
Lube points: 27
Installation Date: 2017.6.12

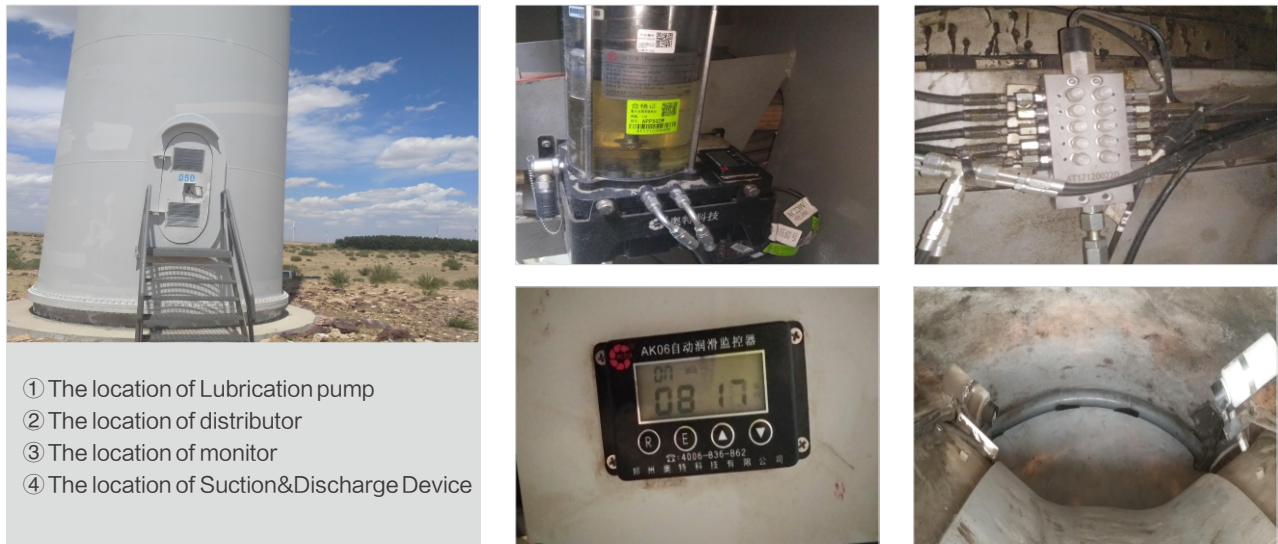
Lubrication parts: blade bearing / gear
Type of Lubrication: ALP1228
Type of Distributor: Progressive Distributor
Number of Distributor: 4



WGCS of DEC

Manufacturer: DEC
Wind turbine: 1.5MW
Installation Date: 2017.9.13

Lubrication parts: Spindle/pitch
Type of Lubrication: APP502W
Suction & Discharge Device: 12



CLS of Vision energy(2)

Manufacturer: Vision energy
Wind turbine: 2.0MW
Installation Date: 2018.6.29

Lubrication parts: Main bearing
Type of Lubrication: APP502W、ALP1228
Suction & Discharge Device: 12



CLS of CSR

Manufacturer: CSR
Wind turbine: XE82
Installation Date: 2016.10

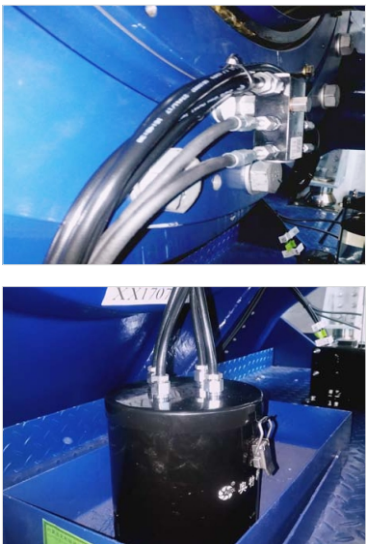
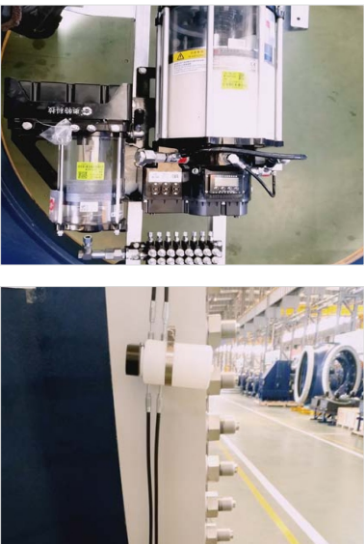
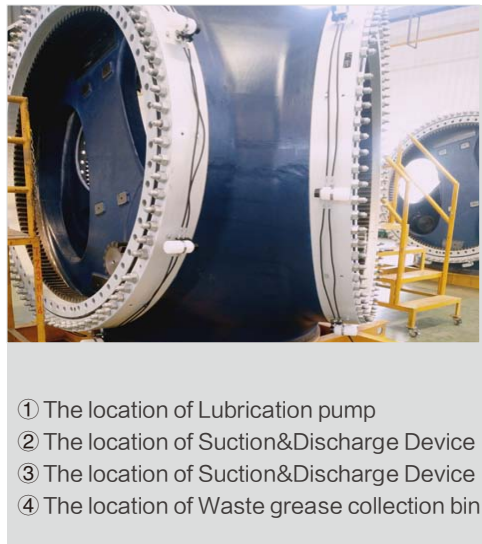
Lubrication parts: Yaw
Type of Lubrication: ALP1016
Lube points: 12



WGCS of Geoho Energy

Manufacturer: Geoho Energy
Wind turbine: 2.5MW
Installation Date: 2018.4

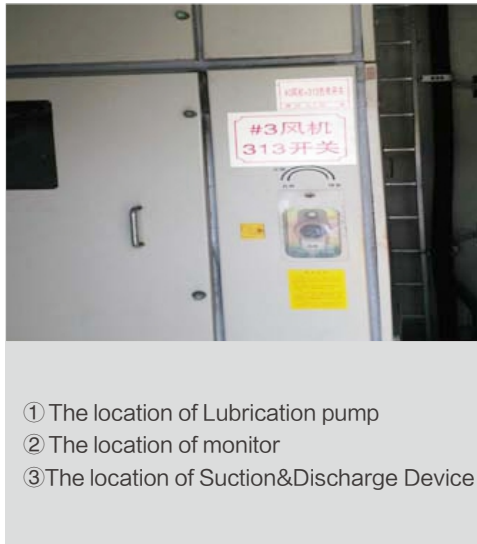
Lubrication parts: Pitch, Main bearing
Type of Lubrication: APP502W
Suction & Discharge Device: 21



CLS and WGCS of Longyuan Power

Manufacturer: longyuan power
Wind turbine: 1.5MW
Installation Date: 2016.8

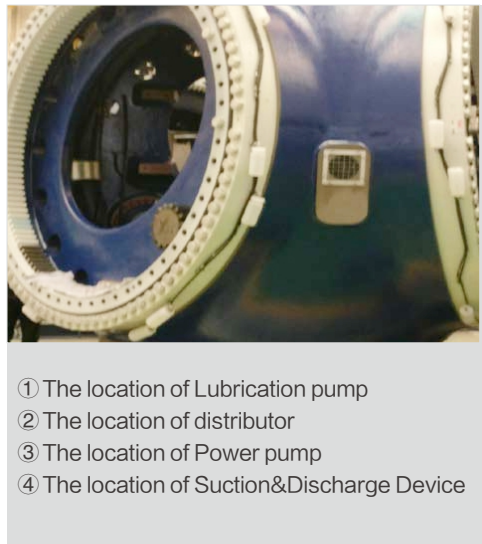
Lubrication parts: Pitch
Type of Lubrication: ALP1228/ALP702W
Suction & Discharge Device: 24



CLS of XuJi Group

Manufacturer: XuJi Group
Wind turbine: 2.5MW
Installation Date: 2017.11

Lubrication parts: Pitch
Type of Lubrication: APP502W、ALP1022
Suction & Discharge Device: 12





The Installation Case of Construction machinery

CLS of SanY 215C Excavator

Manufacturer:SanY
Type of Distributor:Progressive Distributor
Number of Distributor:3
Installation Date:2017.3.20
Equipment type:SY215C excavator
Type of Lubrication:ALP1024
Lube points:18



- ① The location of pump
- ② The location of distributor
- ③ The location of distributor
- ④ The location of tube and wire harness



CLS of SanY 485 Excavator

Manufacturer:SanY
Type of Distributor:Progressive Distributor
Number of Distributor:3
Installation Date:2018.3.16
Equipment type:SY485 excavator
Type of Lubrication:ALP1026
Lube points:9



- ① The location of pump
- ② The location of distributor
- ③ Lubrication point location
- ④ The location of tube and wire harness



CLS of SanY 305 Excavator

Manufacturer:SanY
Type of Distributor:Progressive Distributor
Number of Distributor:3
Installation Date:2018.5.12
Equipment type:SY305 excavator
Type of Lubrication:ALP1024
Lube points:12



- ① The location of pump
- ② The location of distributor
- ③ The location of distributor
- ④ The location of tube and wire harness

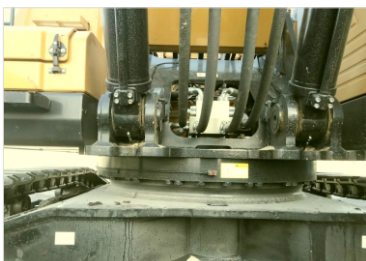


CLS of SanY 750 Excavator

Manufacturer:SanY
Type of Distributor:Progressive Distributor
Number of Distributor:3
Installation Date:2018.3.10
Equipment type:SY750 excavator
Type of Lubrication:ALP1026
Lube points:9



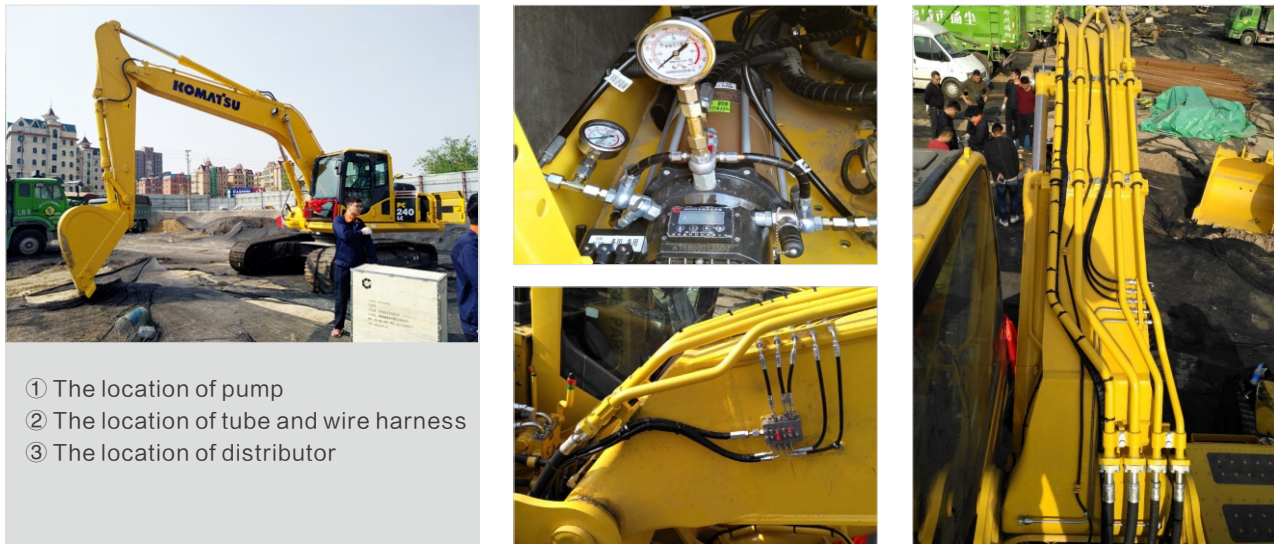
- ① The location of pump
- ② The location of distributor
- ③ Lubrication point location
- ④ The location of tube and wire harness



CLS of Komatsu 240 Excavator

Manufacturer:Komatsu
Type of Distributor:Progressive Distributor
Number of Distributor:3
Installation Date:2018.3.28

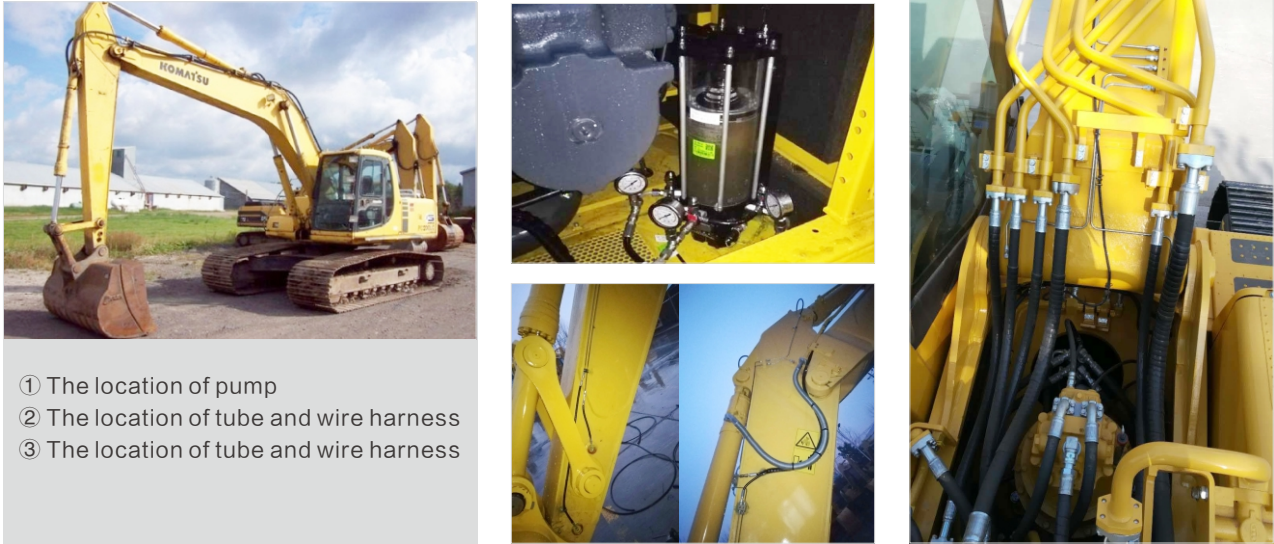
Equipment type:Komatsu 240 excavator
Type of Lubrication:ALP1026
Lube points:9



CLS of Komatsu 460 Excavator

Manufacturer:Komatsu
Type of Distributor:Progressive Distributor
Number of Distributor:2
Installation Date:2017.10.14

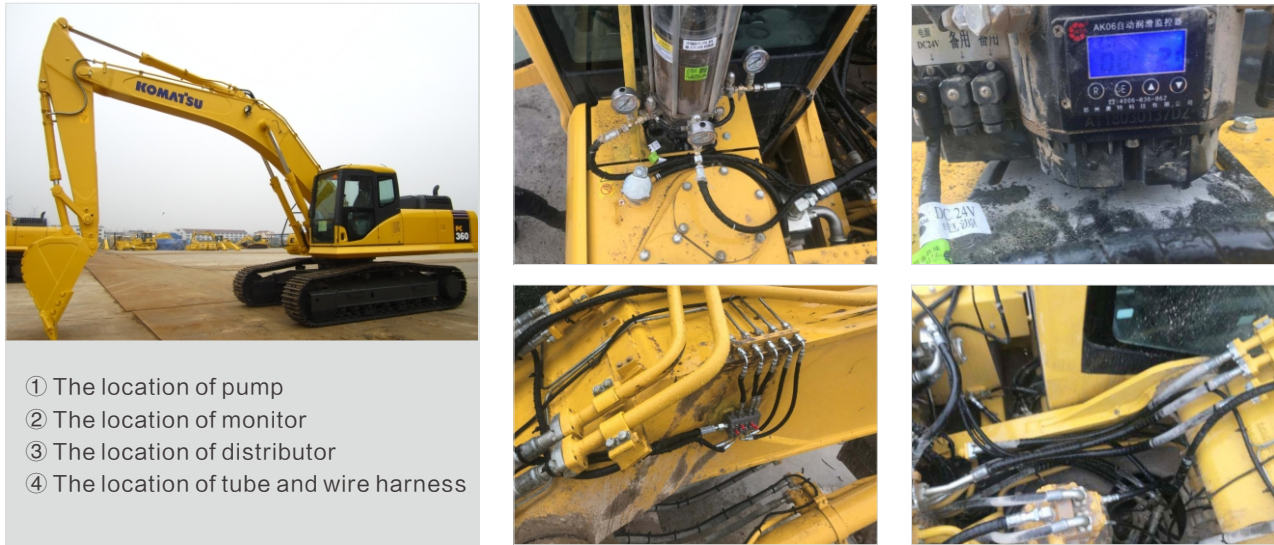
Equipment type:Komatsu 460 excavator
Type of Lubrication:ALP1026
Lube points:8



CLS of Komatsu 360 Excavator

Manufacturer:Komatsu
Type of Distributor:Progressive Distributor
Number of Distributor:2
Installation Date:2017.10.14

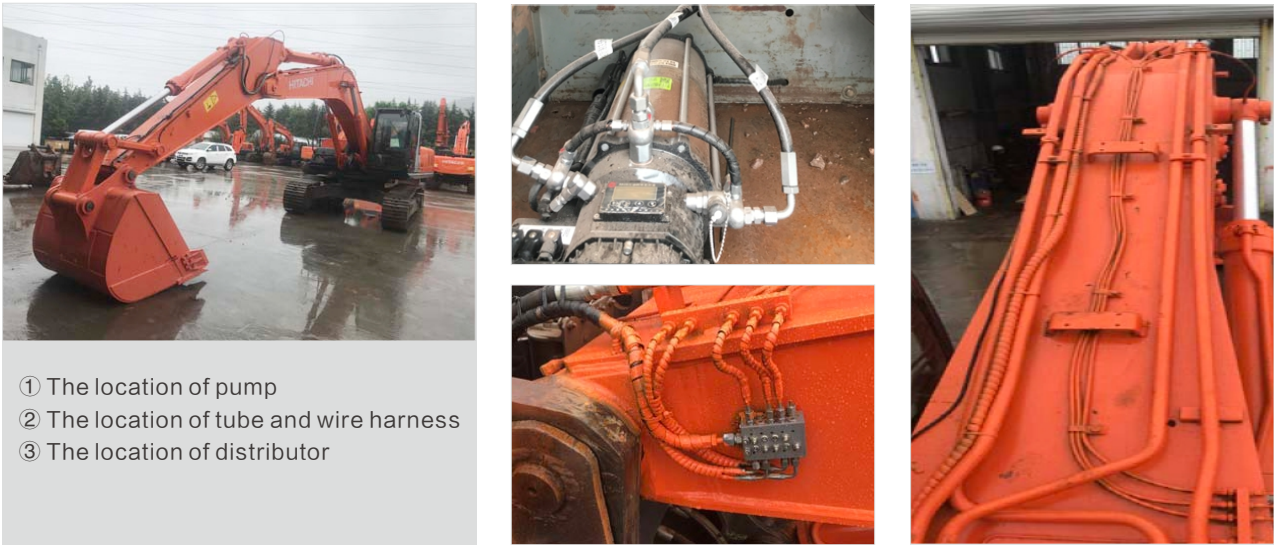
Equipment type:Komatsu 360 excavator
Type of Lubrication:ALP1026
Lube points:8



CLS of Hitachi 360 Excavator

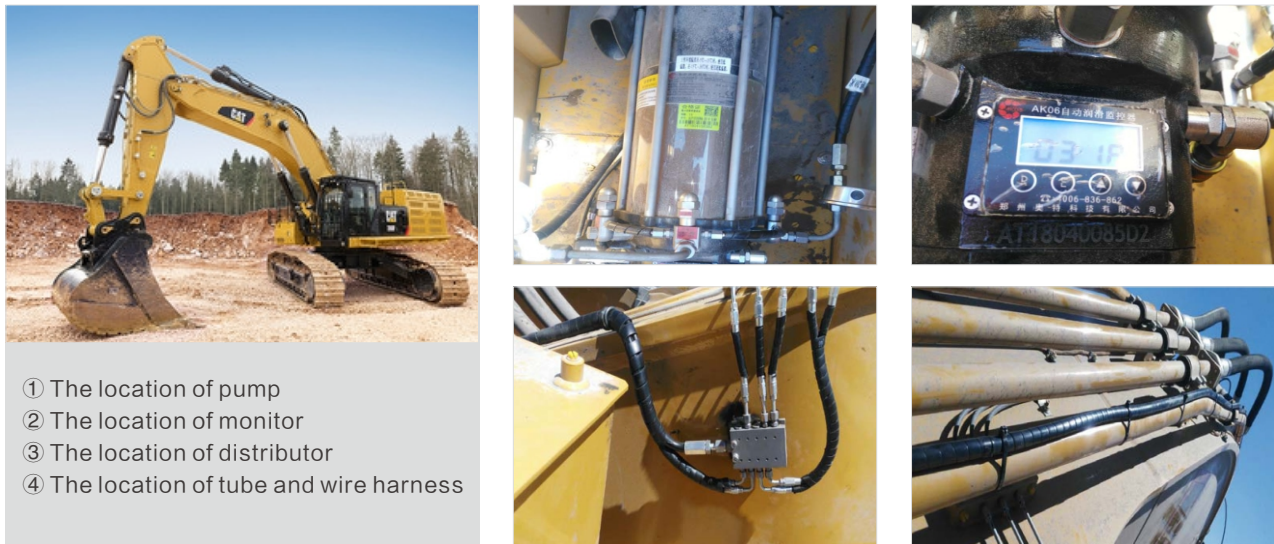
Manufacturer:Hitachi
Type of Distributor:Single-line Distributor
Number of Distributor:3
Installation Date:2018.7.10

Equipment type:Hitachi 360 excavator
Type of Lubrication:ALP1026
Lube points:20



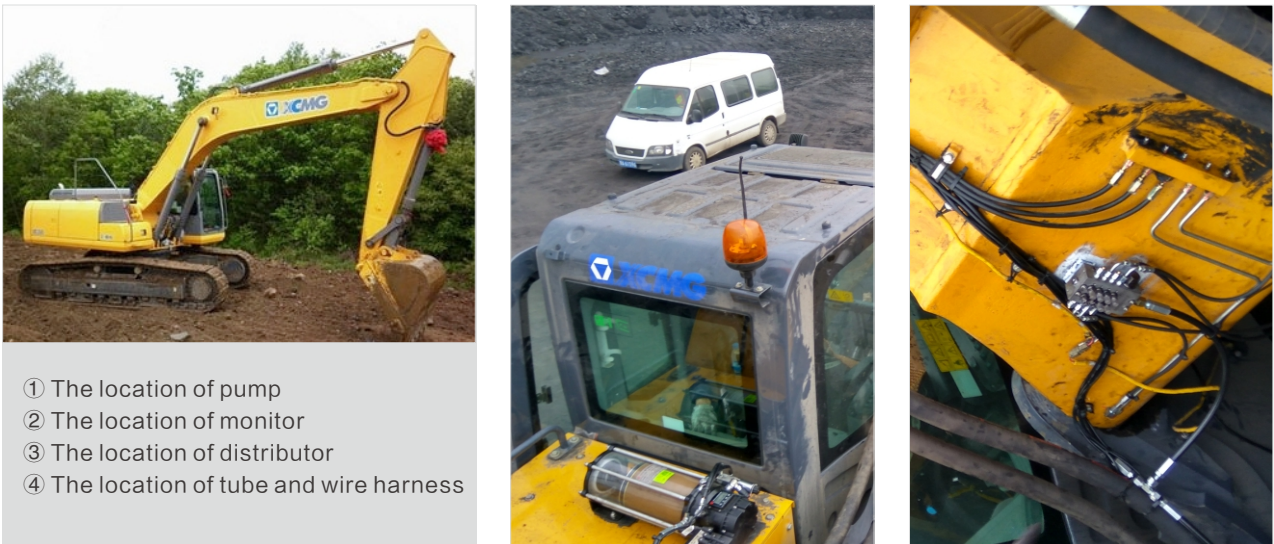
CLS of Catepillar Excavator

Manufacturer:Catepillar
Type of Distributor: Progressive Distributor
Number of Distributor: 2
Installation Date: 2017.11.15
Equipment type: Catepillar 390 excavator
Type of Lubrication: ALP1026
Lube points: 11



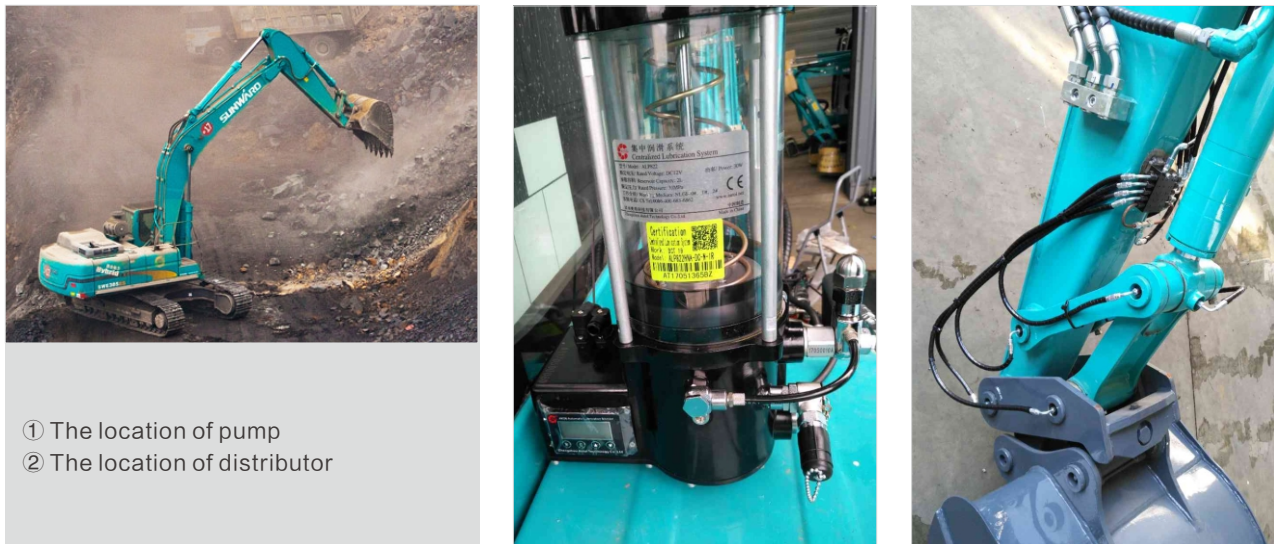
CLS of XCMG XE700D Excavator

Manufacturer: XCMG
Type of Distributor: Single-line Distributor
Number of Distributor: 2
Installation Date: 2017.3.18
Equipment type: XE700D excavator
Type of Lubrication: ALP1026
Lube points: 10



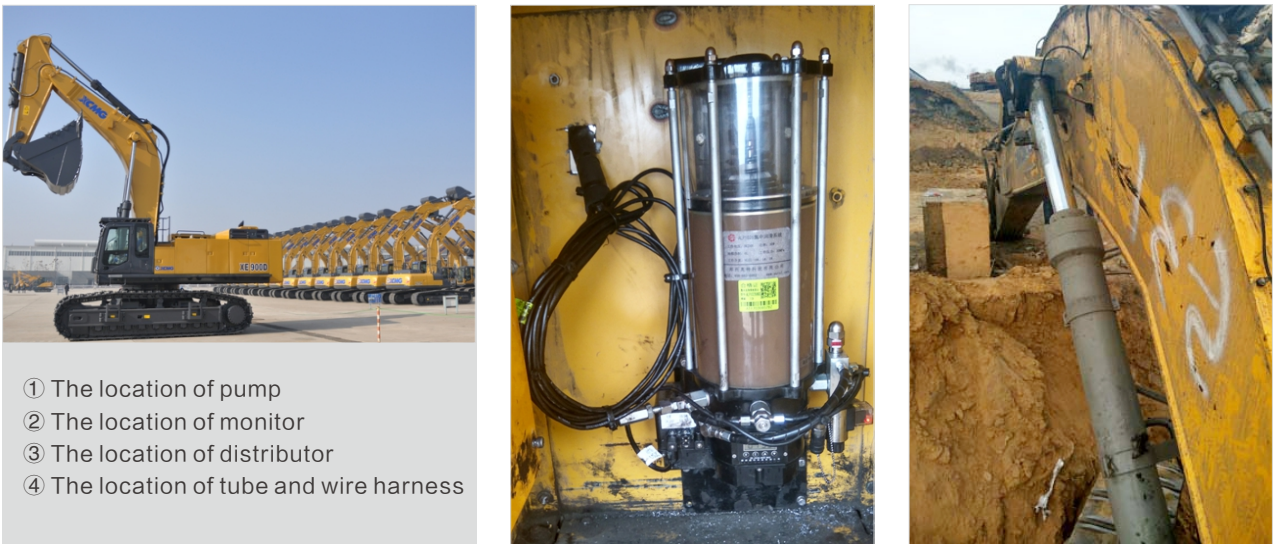
CLS of Sunward Excavator

Manufacturer: Sunward
Type of Distributor: Progressive Distributor
Number of Distributor: 3
Installation Date: 2017.7
Equipment type: SWE70B excavator
Type of Lubrication: ALP822
Lube points: 17



CLS of XCMG XE900D Excavator

Manufacturer: XCMG
Type of Distributor: Single-line Distributor
Number of Distributor: 2
Installation Date: 2017.3.18
Equipment type: XE900D excavator
Type of Lubrication: ALP1026
Lube points: 12



CLS of KOBELCO 350 Excavator

Manufacturer: KOBELCO
Type of Distributor: Progressive Distributor
Number of Distributor: 3
Installation Date: 2017.6.19

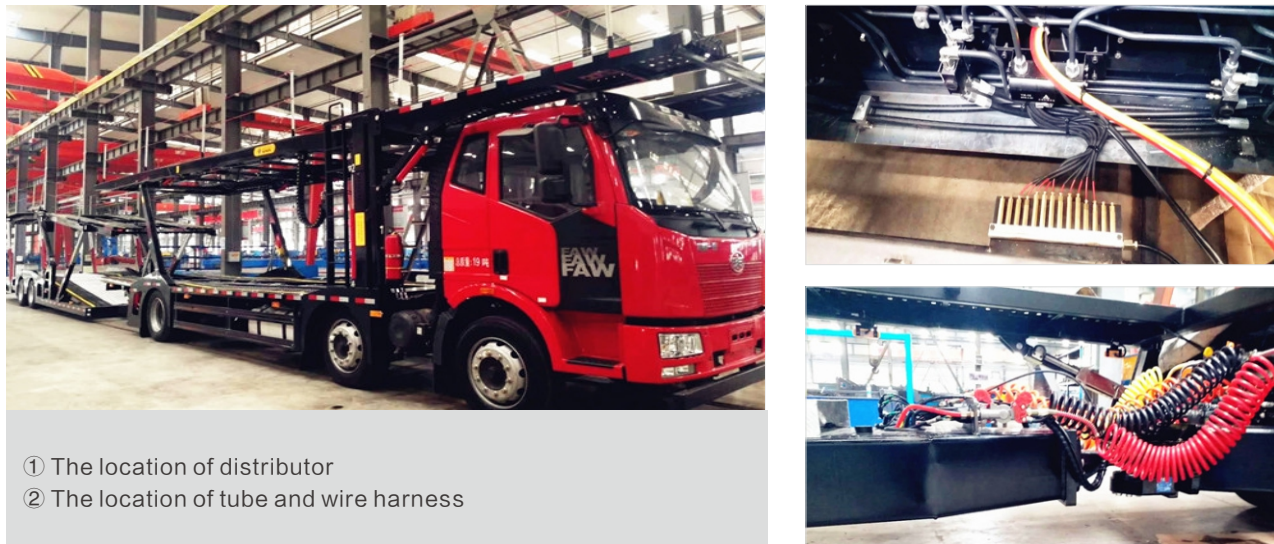
Equipment type: SK350LC-8 excavator
Type of Lubrication: ALP1024
Lube points: 17



CLS of FAW and Beiqi Foton

Manufacturer: FAW and Beiqi Foton
Type of Distributor: single-row single-line
Number of Distributor: 2
Installation Date: 2018.6

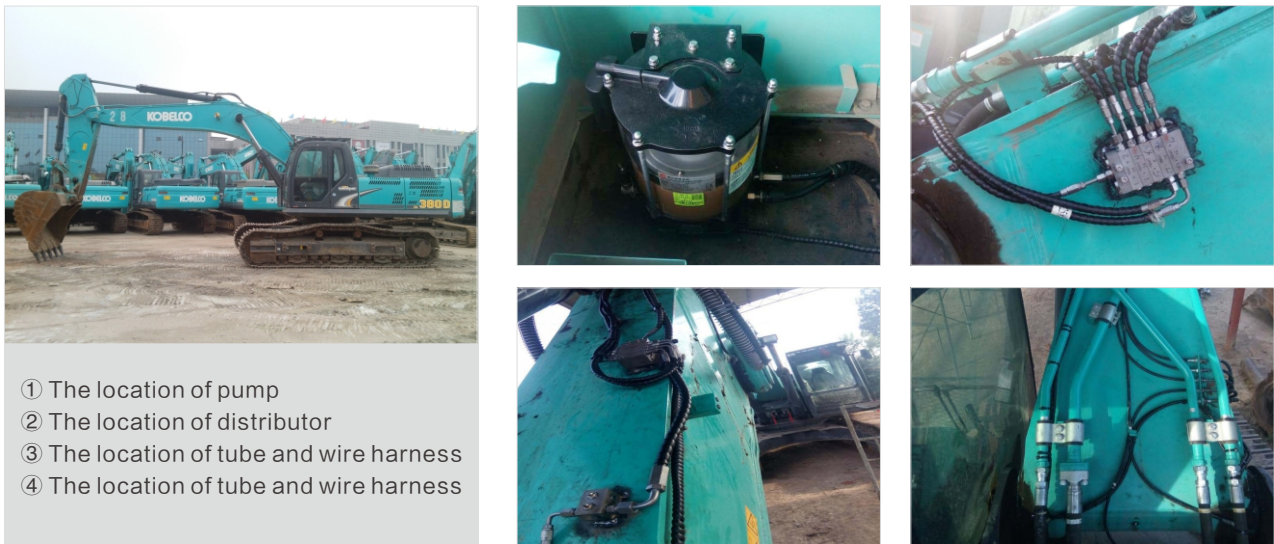
Equipment type: Trailer
Type of Lubrication: AR60H
Lube points: 52



CLS of KOBELCO 380 Excavator

Manufacturer: KOBELCO
Type of Distributor: Progressive Distributor
Number of Distributor: 4
Installation Date: 2018.6.12

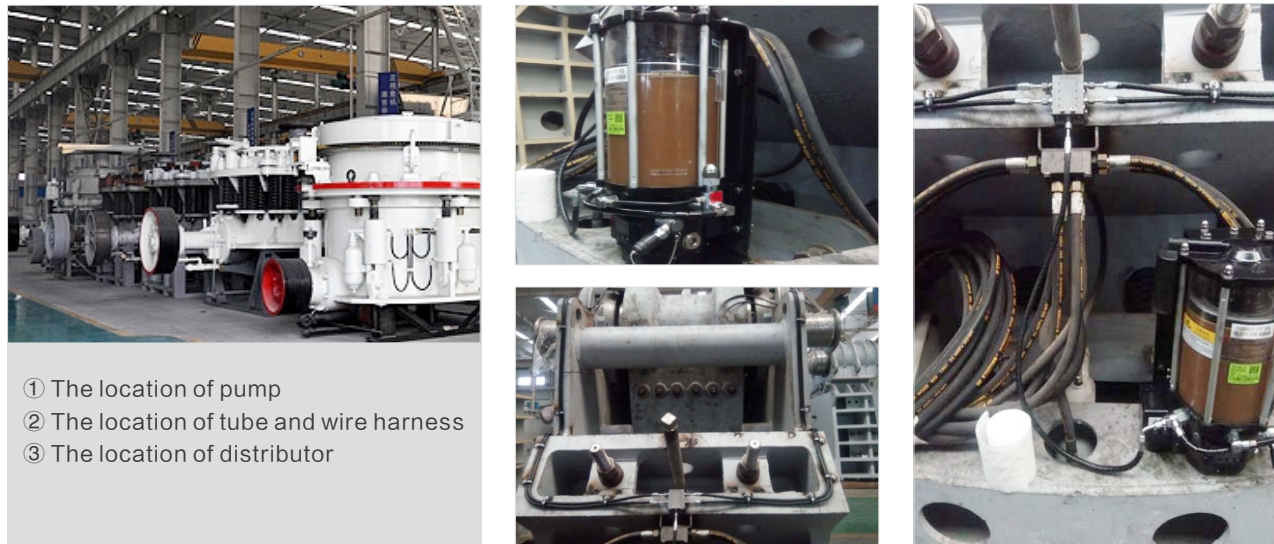
Equipment type: 380 excavator
Type of Lubrication: ADP1224 double-line
Lube points: 12



CLS of Liming heavy Industry 860 Crusher

Manufacturer: Liming heavy Industry
Type of Distributor: Progressive Distributor
Number of Distributor: 1
Installation Date: 2018.3.9

Equipment type: 860 Crusher
Type of Lubrication: ALP1024
Lube points: 4



CLS of Doosan Loader

Manufacturer: Doosan

Type of Distributor: Progressive Distributor

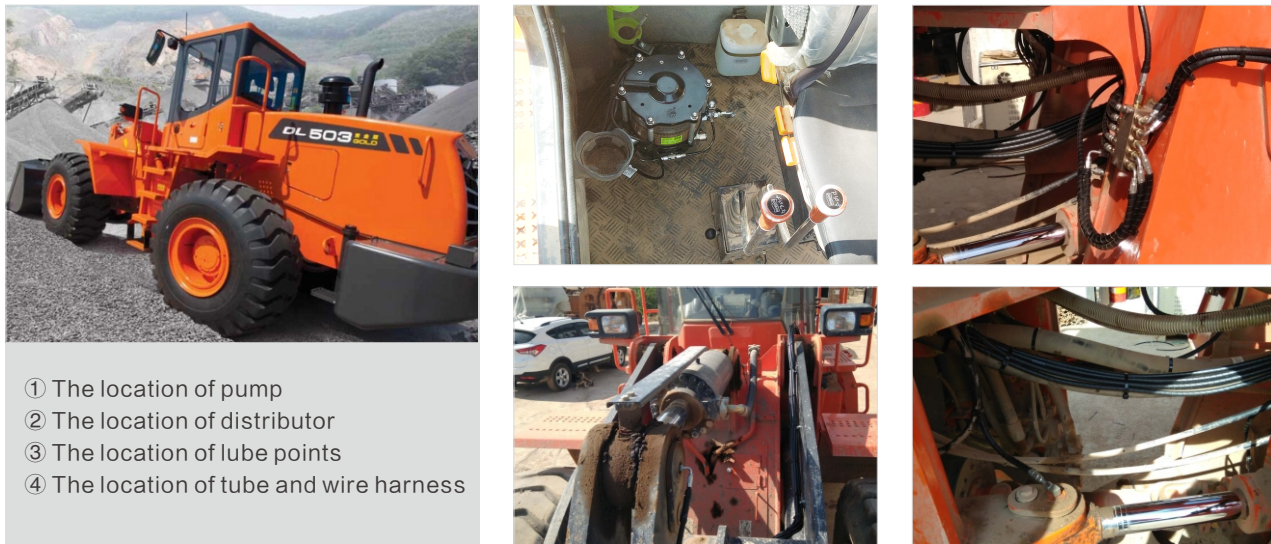
Equipment type: DL503-9C Loader

Number of Distributor: 3

Type of Lubrication: ALP1022

Installation Date: 2017.6.19

Lube points: 17



CLS of Ginaf

Manufacturer: Ginaf

Type of Distributor: single-row single-line

Equipment type: HD 5395 TS truck

Number of Distributor: 2

Type of Lubrication: ALP502、AR60H

Installation Date: 2014.4.3

Lube points: 23/22



CLS of Beijing Huade

Manufacturer: Beijing Huade

Equipment type: Crusher

Type of Lubrication: Explosion-proof multi-point pump

Installation Date: 2017.5.18

Lube points: 4



CLS of Yutong

Manufacturer: Yutong

Type of Distributor: Single-line Distributor

Equipment type: Garbage compression vehicle

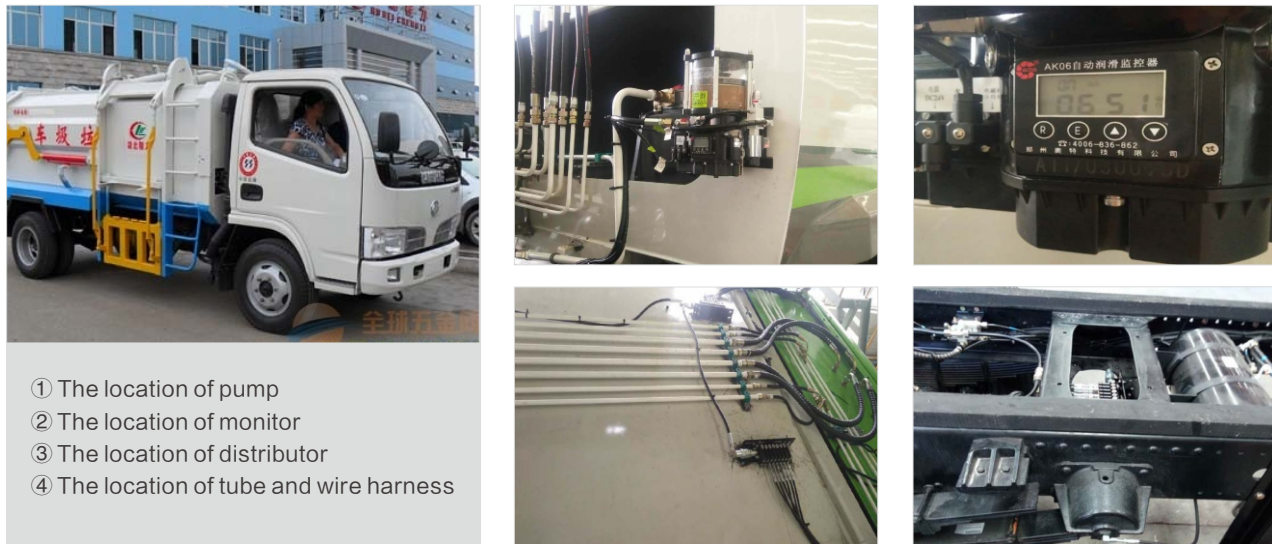
Number of Distributor: 4

Type of Lubrication: ALP1022

Installation Date: 2017.6

Lubrication parts: Chassis, rear bin garbage collection rack

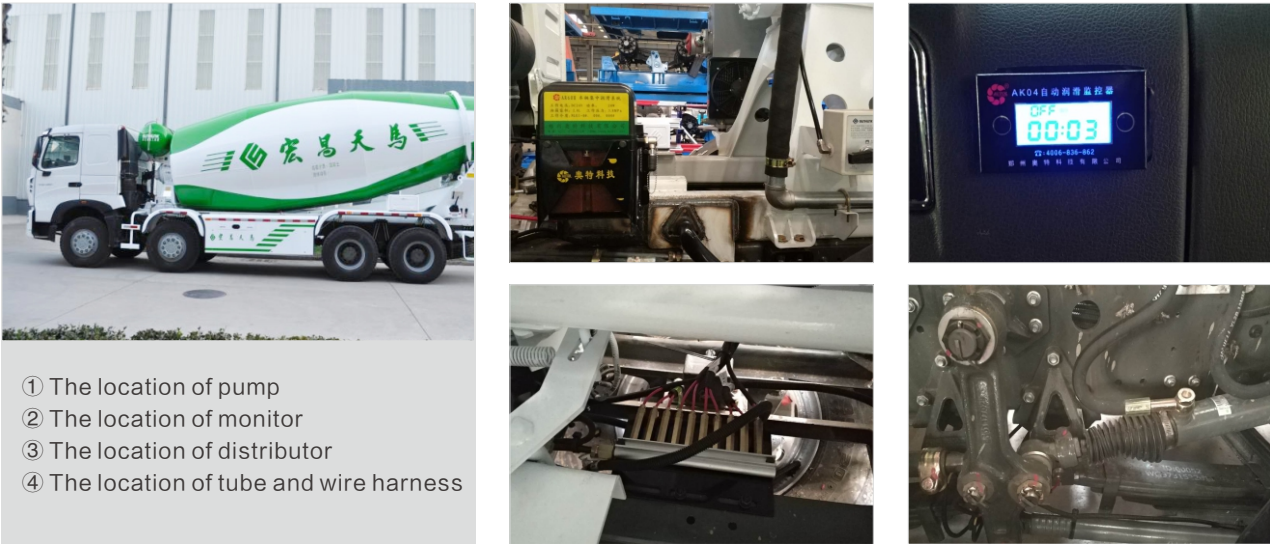
Lube points: 42



CLS of Sunhunk (Heavy truck HOWO chassis HOWO T5G340)

Manufacturer: Sunhunk
Type of Distributor: single-row single-line
Number of Distributor: 4
Installation Date: 2018.2.2

Equipment type: Mixer
Type of Lubrication: AR60H
Lube points: 43



CLS of Sunhunk

Manufacturer: Sunhunk
Type of Distributor: single-row single-line
Number of Distributor: 4
Installation Date: 2017.12.7

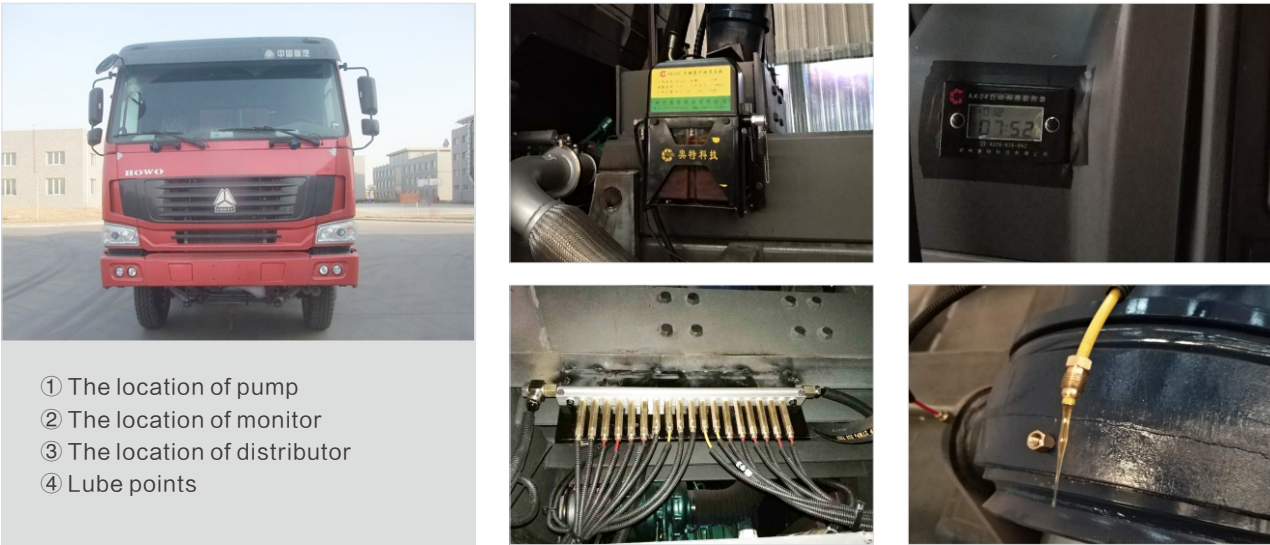
Equipment type: Dump truck
Type of Lubrication: AR60H
Lube points: 54
Lubrication parts: Tractor chassis, trailer chassis



CLS of Sunhunk (Heavy truck HOWO chassis HOWO mine overlord 371)

Manufacturer: Sunhunk
Type of Distributor: single-row single-line
Number of Distributor: 2
Installation Date: 2018.2

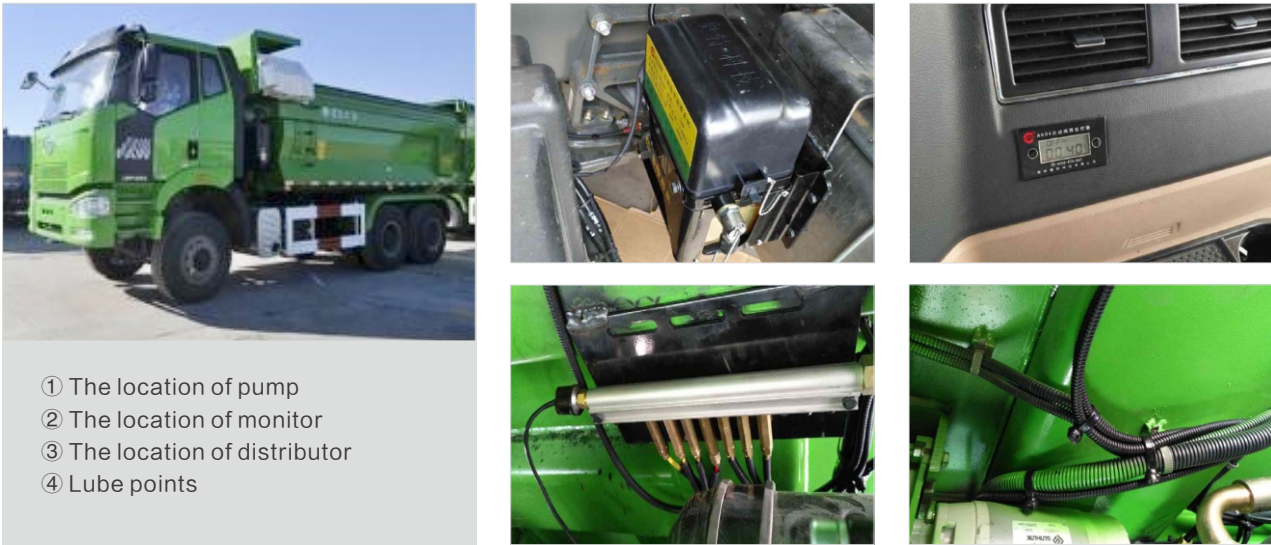
Equipment type: truck
Type of Lubrication: AR60H
Lube points: 27



CLS of Sunhunk

Manufacturer: Sunhunk
Type of Distributor: single-row single-line
Number of Distributor: 2
Installation Date: 2018.2

Equipment type: Muck truck
Type of Lubrication: AR60H
Lube points: 29
Lubrication parts: Steering, front axle, rear axle, lift



CLS of Dalian 25 ton portal crane

Manufacturer location: Dalian Zhuanghe Port
Type of Distributor: Progressive Distributor
Number of Distributor: 6
Installation Date: 2017.5.18

Equipment type: 25 tons crane
Type of Lubrication: ALP1026
Lubrication parts: Walking wheel,
rotary support, universal driving shaft

Lube points: 103



CLS of Dalian 45 ton portal crane

Manufacturer location: Dalian Zhuanghe Port
Type of Distributor: Progressive Distributor
Number of Distributor: 18
Installation Date: 2017.5.18

Equipment type: 45 tons crane
Type of Lubrication: ALP1026
Lube points: 96
Lubrication parts: Walking wheel



CLS of Huaneng Caofeidian Port Conveyor

Customer Name: Huaneng Caofeidian Port
Equipment type: Belt conveyor
Number of installations: 21+15
Installation Date: 2017.5.18

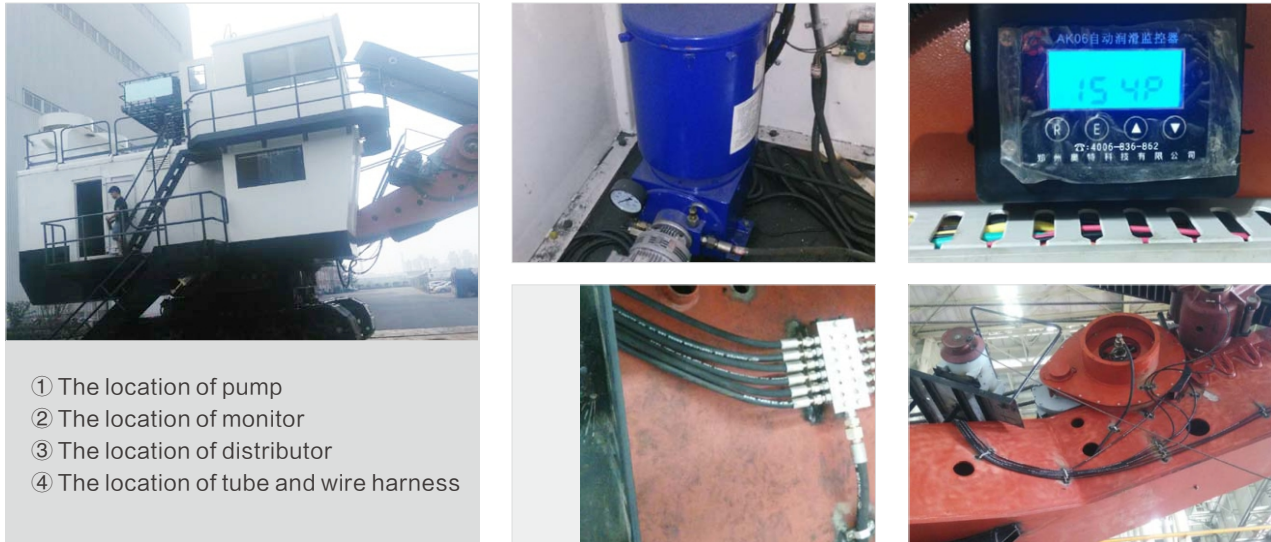
Type of Lubrication: Explosion-proof multi-point pump
Lube points: 4
Number of belt conveyors: 27



CLS of Tianjin SERI(1)

Manufacturer: Tianjin SERI
Type of Distributor: Progressive Distributor
Number of Distributor: 2
Installation Date: 2017.6.29

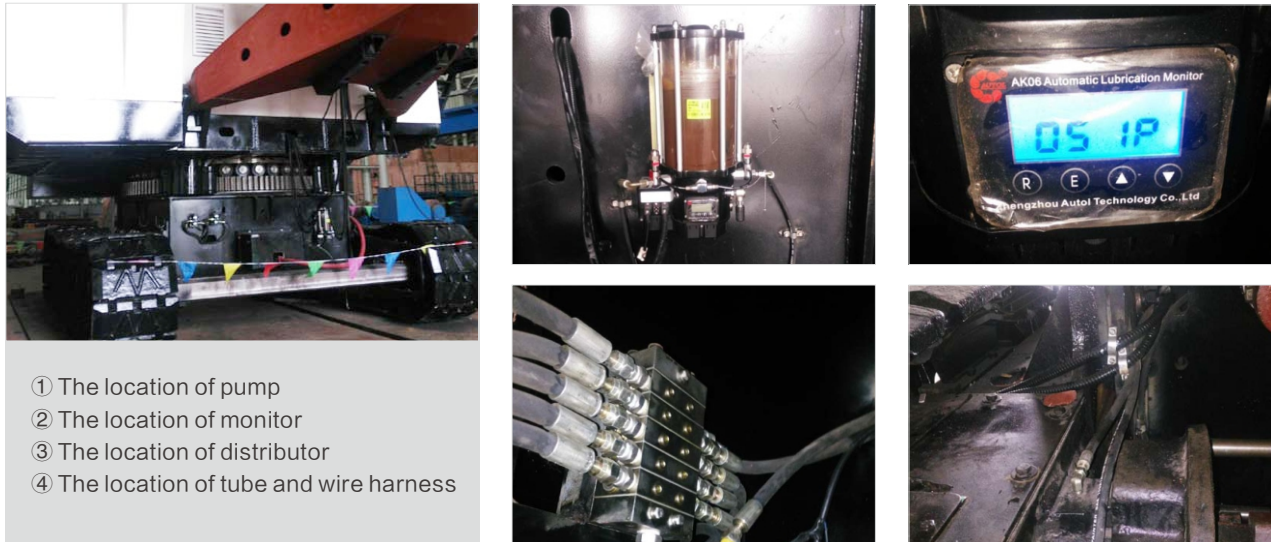
Equipment type: SR50 electric shovel
Type of Lubrication: DRB2-P120Z
Lube points: 25



CLS of Tianjin SERI(2)

Manufacturer: Tianjin SERI
Type of Distributor: Progressive Distributor
Number of Distributor: 2
Installation Date: 2017.6.29

Equipment type: SR50 electric shovel
Type of Lubrication: ALP1014
Lube points: 19



CLS of DSIC

Manufacturer: DSIC
Type of Distributor: Single-line Distributor
Number of Distributor: 2
Installation Date: 2017.5.25

Equipment type: Forklift
Type of Lubrication: ALP812
Lube points: 16



CLS of DSIC

Manufacturer: DSIC
Type of Distributor: Single-line Distributor
Number of Distributor: 24
Installation Date: 2017.5.25

Equipment type: flatbed truck
Type of Lubrication: ALP100 series
Lube points: 192

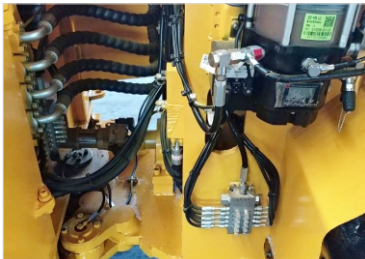


CLS of Nanchang Kama

Manufacturer: Nanchang Kama
Type of Distributor: Single-line Distributor
Number of Distributor: 2
Installation Date: 2017.8.10
Equipment type: WJ-3 Underground scraper
Type of Lubrication: ALP1022
Lube points: 20



- ① The location of pump
- ② The location of monitor
- ③ The location of distributor
- ④ The location of tube and wire harness



CLS of Kelong

Manufacturer: Kelong
Equipment type: B1800 belt conveyor
Number of installations: 1
Installation Date: 2017.10.11
Type of Lubrication: HB-P400Z,
Double plunger pump
Lube points: 4
Number of belt conveyors: 27



- ① The lubrication pump
- ② control cabinet
- ③ pressure gauge
- ④ control box
- ⑤ pipe installation
- ⑥ pipe installation
- ⑦ remote monitoring interface

CLS of NFLG

Manufacturer: NFLG
Type of Distributor: Progressive Distributor
Number of Distributor: 2
Installation Date: 2017.6.29
Equipment type: 3XDB-M4.2/220C4FF
5XDB-M4.2/220C4FF
Type of Lubrication: ALP1014
Lube points: 46



- ① The location of pump
- ② The location of monitor
- ③ The location of tube and wire harness
- ④ The location of pump station



CLS of HINO MOTOR

Manufacturer: HINO MOTOR
Type of Distributor:single-row single-line
Number of Distributor:2
Installation Date:2017.7

Equipment type: truck
Type of Lubrication: AR60
Lube Points: 28



CLS of Bottle Washer

Manufacturer:COCA COLA
Type of Distributor:Progressive
Number of Distributor:7
Installation Date:2018.3

Equipment type:Bottle Washer
Type of Lubrication:ALP1228HNA
Lube Points:60

