

Vision: To become the first-class general use frequency inverter preferred supplier

Mission: Committed to provide value-added products and services for rapid and changeable customers

Core Values: Respect and Trust, Pragmatic Innovation, Respect Talented Person, Win-win Cooperation



■ **Pre-sale Service:**

Technical scheme analysis, frequency converter model selection; Can customize product and software according to customer requirements

■ **Selling Service:**

Deliver in time, Technical Training, Installation and Debugging

■ **After-sale Service:**

Use effect tracking, Breakdown maintenance, Software upgrades



Learn more visiting the official website:

www.szeasydrive.com



V2.0



The Joint Venture With Schneider Electric

Product Catalogue

Shenzhen Easydrive Electric Co., Ltd

Company Profile

Shenzhen Easydrive Electric Co.,Ltd was founded in 2004, a joint venture with Schneider Electric, Shenzhen Double Soft Certification Enterprise ,National High and New Technology Enterprise, Focus on frequency control system and other power electronics transmission technology research and development, production and sales. Relying on high performance vector frequency conversion control technology, power electronics drive technology and other core technology platform and powerful marketing network platform, the product won the title of "quality trusted product", were exported to more than 50 countries and regions. Easydrive repeatedly won the title of "Top 10 brands of low-voltage frequency inverter"

Easydrive electric is committed to provide value-added products and services for rapid and changeable customers, realize the common growth of enterprise value and customer value.

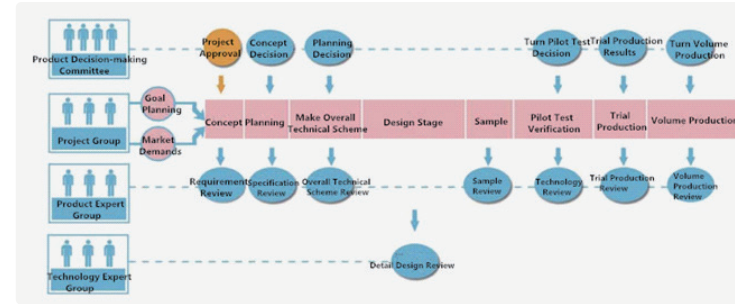
our company has set up more than 20 marketing offices in China ,to provide professional and convenient services for customers. the products are widely used in machine tools, wire and cable, plastic, printing, packaging, textile, electronic equipment, building materials, metallurgy, coal mining, municipal and other industries.

Enterprise honor



Strong Development Ability

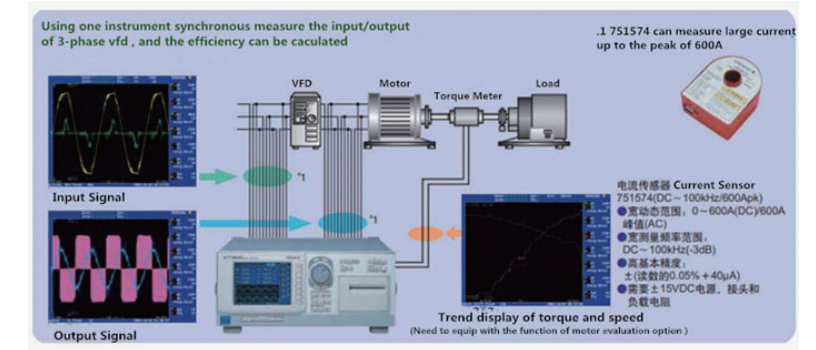
Easydrive is a national high-tech enterprises that technical innovation is the life. We adopt advance IPD development process to fully implement strict product planning and test validation from product demand entry to market launch, To ensure rapid, accurate and reliable convert customer requirements into the product.



All-around Technical Testing And Verification Based on Site

Score technology

- Voltage vector, Current vector control algorithm
- Flux observer technology, Weak magnetic algorithm
- Accurate parameter self-tuning technology
- Auto Current Limiting, Current control technology



Motor back to back testing Platform



Motor back to back testing Platform

Motor Performance Test Platform



Power Analyzer



Electric Stress Test Instrument

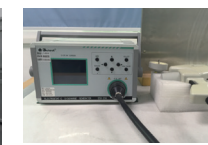


Environmental Chambers

Environment Test Platform



The High Frequency Noise Simulating Generator



ESD Generator



Automatic Lightning Surge Tester



Intelligent Group Pulse Generator

EMC Test Platform

The Advantage Of The Supply Chain

Easydrive electric always proceed with strict quality management ,Optimizing the production process diligently, applying advanced ERP management system to integrate orders、procurement、Production and coordination of logistics, to ensure the delivery of accurate、timely and reliable. At present it has formed annual production of 150,000 inverters with excellent manufacture supply capacity.

● The advantage of the supply chain

Reliable Quality Guarantee
System: ISO9001 Quality System Certification

Advanced Production Equipment Guarantee:Three Anti-automatic Coating Apparatus, Automatic Module Welding Equipment, Automatic Production Line

Strict Test Methods Guarantee:All kinds of Auto, Semi-auto Test Equipment



GT200 High performance system type frequency inverter



Power Range

- GT200 0.75KW~45KW/AC220V~240V
- GT200 0.75KW~850KW/AC380V~440V

Product Feature

- Excellent performance
 - Speed Stable Precision: +/-0.5% rated synchronous speed(SVC)
 - Speed Adjustment Range: 1:100(SVC)
 - Torque Response: <20ms (SVC)
 - Heavy Load Overload Capacity: 110% rated stable operation, 150% rated load 1min, 180% rated load 3s
 - Low frequency large torque, under the open-loop vector model, can realise 0.5Hz loading (150% rated load) stable operation. The drive can keep enough torque output capacity and no trip to run when there is instant mutation load.
 - Auto Current Limiting: Motor current can be controlled at a certain level does not affect the output torque.
 - Can accurately identify the motor parameters, realise high performance vector control.
 - Can realise static self-learning, dynamic self-learning, and adapt to different working condition requirement.
 - Can realise motor parameters accurate setting under the condition of long cable.
- Rich and Comprehensive Application Function
 - Flexible Multi-stage V/F Curve; Multi-stage speed Control; Sample PLC application; Standard RS485 Communication
 - The Selection of Frequency Source And Command Source; Frequency Binding and Switching; Frequency master and auxiliary;
 - Pulse frequency input and output
 - Built-in PI control; Preset for closed-loop; Zero frequency difference ;
 - Swing frequency operation; Fixed length control; Speed tracking; Droop control; Instant stop non-stop; Automatic energy-saving operation; Multiple protection and overload warning
 - Built-in braking unit below 22kw; Strong Expandability
- Excellent adaptability
 - Working voltage range: Rated voltage 380-440V; through the automatic voltage regulation technology (AVR), the long-term low Analog output terminal: 2-10V/ 0-10V/ 4-20mA/ 0-20mA optional, output physical quantity optional, convenient for connecting external instrument.
 - Operating time automatically accumulated: set the time to issue instructions to facilitate the maintenance of equipment maintenance.
 - User password settings: the user's parameters can be kept secret to prevent unauthorized personnel modify parameters.
 - Built in braking unit: Below 22kw no external braking unit needed, reduce the cost of the customer system.
 - Strong Expandability : Reserved 2pcs Expansion card position, can connect to I/O Expansion card, communication expansion card and other process expansion card (Such as air compressor adapter card, water-supply card, plastic injection card and etc), or customized cards according to user's demand.
 - Dustproof design: Comprehensive anti-corrosion paint spraying protection, independent air duct design, dust accessories optional to increase overall defensive capabilities, to meet the long-term reliable operation of high humidity or excessive dust occasions.
 - Easily replaceable fan: Don't need to disassemble to realize quick replacement of fan, adapt to the special environment of wind machine, adapt to special occasions which need regular cleaning air duct debris.

GT200 High performance system type frequency inverter

GT200 control loop CN3 terminal function explanation

Category	Terminal label	Name	Terminal function explanation	Specification
Communication	485+	RS485 communication port	RS485 differential signal Positive end	Standard RS485 Communication port Use twisted pair or shielded wire
	485-		RS485 differential signal Negative end	
Multifunctional output terminal	DO1	Open collector output terminal	Programmable definition for a variety of functions of the output terminal, see the terminal function	Optical coupler isolated output. Work Voltage range:9-30V; Maximum output current:50mA
	DO2	Open collector pulse output terminal	parameters F6.11, F6.12 output terminal function, can be extended DO3 open collector output terminal	Work Voltage range:9-30V; Maximum output current:50mA Maximum output frequency:50KHz(Due to F6.20)
Relay output terminal	TA TB TC	Programmable relay terminal output	Normal:TA-TB often closed; TA-TC often open; Relay output terminal Programmable defined as a variety of functions of the relay output terminals, can be extended TB2 TC2 TA2 (see the parameters of the F6.13 function description)	Contact rating NO: A 250VAC NC: 3A 250VAC
Analog input	AI1/AI2	Analog input AI2	Accept analog current, voltage input, can be selected by the functional code (Reference: GND) can be extended to AI3, support PT100/PT1000 differential input	Input voltage range:0-10V(Input impedance:100KΩ) Input current range:0-20mA(Input impedance:165Ω) Resolution:1/1000
Analog output	AO	Analog output	To provide analog voltage, current output, through the functional code selection, can be corresponding to 12 kinds of physical quantities, the factory default output frequency, can be extended AO2 (see parameters F6.24/F6.25 function description)	Voltage output range:0-10V Voltage output range:0-20mA
Multifunctional input terminal	DI1	Multifunctional input terminal 1	Programmable logic is defined as a variety of functions of the switch input terminals, see the sixth chapter terminal function parameters (input and output) input terminal function. (common: PLC) (see parameter function F6.00-F6.04 description) can be extended DI6-DI10	Optical coupler isolated output Input impedance:3.3KΩ Maximum input frequency:200Hz Input voltage range:DC9-30V
	DI2	Multifunctional input terminal 2		
	DI3	Multifunctional input terminal 3		
	DI4	Multifunctional input terminal 4		
	DI5	Multifunctional input terminal 5		
Power Supply	10V	+10V power supply	External supply 10V power supply	Maximum output current:50mA
	GND	+10V power supply common terminal	Reference ground for analog signal and 10V power supply	COM andGND are internal separated
	COM	+24V power supply common terminal	Digital signal input and output common terminal	by each other.
	+24V	+24V power supply	Digital signal power supply	Maximum output current:200mA
	PLC	Multifunctional input common terminal	DI1-DI5 common terminal	Short circuit with 24v as factory default
	CME	digit output common terminal	multifunctional output terminal DO1 common terminal	Short circuit with COM as factory default

GT200 High performance system type frequency inverter

GT200 Overall dimension

Series	Overall dimension									
	Power(KW)	Dimensions(mm)								
	KW	W	W1	H	H1	D	D1	D2	D3	Mounting hole diameter (Φ)
GT200-2S0007G GT200-2S0015G GT200-2S0022G GT200-4T0007G GT200-4T0015G GT200-4T0022G GT200-4T0040G/4T0055P	0.7-4	120	109	215	204	158	133	85		5.5
GT200-4T0055G/4T0075P GT200-4T0075G/4T0110P GT200-2T0040G GT200-2T0055G	5.5-7.5	150	138	259	248	183	176	150		5.5
GT200-4T0110G/4T0150P GT200-4T0150G/4T0185P GT200-2T0075G	11-15	205	188	322	305	219	210	168		6.5
GT200-4T0185G/4T0220P GT200-4T0220G/4T0300P GT200-2T0110G GT200-2T0150G	18.5-22	235	218	370	350	237	230	200		7
GT200-4T0300G/4T0370P GT200-4T0370G/4T0450P GT200-2T0185G GT200-2T0220G	30-37	305	200	490	470	270	235	207		10
GT200-4T0450G/4T0550P GT200-4T0550G/4T0750P GT200-4T0750G/4T0900P GT200-2T0300G GT200-2T0370G GT200-2T0450G	45-75	320	197	560	543	302	275	237		10
GT200-4T0900G/4T1100P GT200-4T1100G/4T1320P GT200-4T1320G/4T1600P	90-132	355	240	678	659	307	257	257		11
GT200-4T1600G/4T1850P GT200-4T1850G/4T2000P GT200-4T2000G/4T2200P GT200-4T2200G/4T2500P	160-185 200-220 (Cabinet)	450 480	300 -	900 1070	875 -	372 412	345 400	300 313		12 (Cabinet)
GT200-4T2500G/4T2800P GT200-4T2800G/4T3150P GT200-4T3150G/4T3550P	250-315 (Cabinet)	525	-	1300	-	438	425	335		(Cabinet)
GT200-4T3550G/4T4000P GT200-4T4000G/4T4500P GT200-4T4500G/4T5000P	355-450 (Cabinet)	635	-	1480	-	467	460	356		(Cabinet)
GT200-4T2000G/4T2200P GT200-4T2200G/4T2500P	200-220 (Wall-mounting)	480	320	1158	1127	421	414	329		12
GT200-4T2500G/4T2800P GT200-4T2800G/4T3150P GT200-4T3150G/4T3550P	250-315 (Wall-mounting)	525	400	1388	1357	447	440	350		12
GT200-4T3550G/4T4000P GT200-4T4000G/4T4500P GT200-4T4500G/4T5000P	355-450 (Wall-mounting)	635	450	1577	1538	482	475	371		16
GT200-4T5000G/4T5600P GT200-4T5600G/4T6300P GT200-4T6300G/4T7100P	500-630	950	900	1812	1845	490.5	388.5	276	154	(Cabinet)
GT200-4T7100G/4T8500P GT200-4T8500G	710-850	1200	1150	1900	1939	580.5	510	402.5	307	(Cabinet)

GT200 High performance system type frequency inverter

Product technical specifications

Item	Description	
Input	Rated voltage/ Frequency	Single-phase 200V-240V, three-phase,380V-440Vac;50Hz/60Hz
	Allowed voltage range	Voltage:220V(-15%)~240V (+10%) 380v(-15%)~440v (+10%);Voltage unbalance rate:<3%;Frequency:±5%
Output	Rated voltage(A)	0~input voltage
	Frequency	0Hz~550Hz
	Overload capacity	150% rated current for 60s
Main control function	Control mode	Sensorless vector control (SVC),V/F
	Range of speed regulation	1:100
	starting torque	150% rated torque when 0.5Hz
	Speed control accuracy	≤±5% rated synchronous speed
	Frequency accuracy	Digital set :max. frequency×±0.01% Analog set: max.frequency×±0.2%
	Frequency resolution	Digital set :1Hz ;Analog set: max. frequency×0.1%
	Torque rise	Auto torque ascension,manual torque ascension 0.1%~30.0%
	V/F curve	Four ways:1 kind of user set V/F curve way, 3 kinds of drop torque characteristic curve way(2.0 times power, 1.7 times power, 1.2 times power
	Acceleration/deceleration curve	Three ways:line acceleration/deceleration、Scurve acceleration/deceleration、 Auto acceleration/deceleration four acceleration/deceleration time, with the unit of time (minute/second) optional ,max.time set 60 hours
	DC braking	DC braking start frequency:0.00Hz~60.00Hz;braking time:0.0~30.0s;braking current:G type 0.0~100.0%
	Jogging	Jog frequency range:0.00Hz~50.0Hz
	Multi-speed operating	It can be realized by interior-PLC or control terminal
	Built-in PID	Be convenient to make closed-loop control system
	Auto energy-saving running	According to load condition, V/F curve can be optimized automatically to get the aim of energy-saving running.
	Auto voltage adjustment	when rhe voltage of network changes,the output voltage can be automatically kept constant
Auto current limiting	During the operation, the current is automatically limited to prevent frequent flow to falut trip	
Auto carrier adjustment	According to the load characteristics ,automatically adjust the carrier frequency	
Customized function	Textile swing frequency	Textile swing frequency control,it can realize the function of fixed and variable swing frequency
	Fixed length control	Length reached stop function
	Sagging function	Applicable to multiple inverters drive one load
	Instant stop/non-stop control	when power-supply off instantly,it can realize keep running through control bus voltage
Running function	Binding function	Running command channel and frequency given channel can be binded and change at same time
	Running command channel	Operation panel,control terminal and communication port , can be switched through many ways
	Frequency given channel	Digital given, keypad potentiometer,analog voltage given,analog current given, pulse given,communication port given,can be switched through many ways
	Auxiliary frequency given channel	Realize flexible auxiliary frequency fine-tuning and frequency combination operation
	Pulse output terminal	0~50KHz pulse square wave signal output,can realize output setting frequency and output frequency ect.
Operating panel	Analog output terminal	2 ways analog output,0~10v、 0~20mA to get output of physical quantity such as setting frequency and output frequency
	LED display	can display 20 kinds of parameters such as setting frequency,output frequency,output voltage,output current and so on
protection function	Key Locked and function choose	Define the function scope of part of the keys,in case of mistake operation
	protection function	Phase-loss protection(optional),over current protection,over voltage protection,under voltage protection,over heat protection,over load protection
	Service location	Indoor,not suffer from sun,dust,corrosive gas,oil fog,steam and so on
Environment	Altitude	Less than 1000m (derating at higher than 1000m)
	Environment temperature	-10°C~+40°C
	Humidity	Less than 90%RH, no condensation
	Vibration	Less than 5.9m/s2 (0.6M)
	Storage temperature	-20°C~+60°C
Structure	Protection class	IP20 (In service state or keyboard state.)
	Cooling way	Air-blast cooling
Installation Way	GT100: Wall-hanging、 Lateral installation、 Guide rail installation,GT200: Wall-hanging,Cabinet、 Through the wall installation	

GT20 high performance universal frequency inverter



Power Range

- GT20 380V: 0.75KW~15KW
- GT20 220V: 0.75KW~2.2KW

Product Feature

- performance feature
 - 1.Excellent current control capability,Ensure that the inverter doesn't trip during the process of fast acceleration.
 - 2.The overexcitation function is automatically added in the deceleration process,deceleration time is shorter.
 - 3.Strong over modulation capability,the output voltage is higher at the same input voltage.
 - 4.Strong overload suppression capability,Ensure that the inverter does not stop due to overload fault at the maximum outputting and dyeing, packaging, printing, pharmaceutical, food, reflow and production line etc.
- Function Features
 - 1.Built-in industry-specific macro parameters , Support one-click setting of industry parameters
 - 2.Support external keyboard (LED keyboard)
 - 3.Side by side installation, guide rail installation
 - 4.Support keyboard parameter copy
- Application

GT20 is a small size smart inverter product, It can be widely used in woodworking carving, glass edge grinding, food filling, medicine centrifuge, automatic production line, electronic equipment, logistics equipment and small automated mechanical equipment etc.

GT20 high performance universal frequency inverter

GT20 control loop terminal function explanation

Category	Terminal Label	Name	Terminal function description	Specification
Communication	485+	RS485 communication interface	RS485 differential signal positive terminal	For standard RS485 communication interface, please use twisted pair or shielded wire.
	485-		RS485 differential signal negative terminal	
Multifunctional output terminal	DO1	Open collector output terminal	It can be programmed and defined as switch output terminal with multiple functions, see terminal function parameter F6.11 for details, output terminal function introduction (common port CME)	Optocoupler isolated output; Working voltage range 9-30V; Maximum output current: 50mA
Multifunctional output terminal	DO2	Open collector output terminal	It can be programmed and defined as switch output terminal with multiple functions, see terminal function parameter F6.12 for details, output terminal function introduction (common port CME)	Optocoupler isolated output; Working voltage range 9-30V; Maximum output current: 50mA; Maximum output frequency: 50KHZ;
Analog Input	AI1	Analog input AI1	AI1 terminal receiving analog current, and voltage input (selected and switched through jump cap)	Input voltage range: 0~10V (input impedance: 102KΩ) Resolution: 1/1000 Input current range: 0~20mA (input impedance: 255Ω) Resolution: 1/1000
	AI2	Analog input AI2	Receives analog voltage input	
Analog Output	AO1	Analog output	Provides analog voltage output, which can correspond to 12 physical quantities (see F5.25 for details)	Voltage output range: 0~10V
	AO2	Analog output	Provides analog voltage output, and current output (AO2 terminal can be realized by jump cap) can correspond to 12 physical quantities (see F5.26 for details)	Voltage output range: 0~10V Current output range: 0~20mA
Multifunctional input terminal	DI1	Multifunctional input terminal 1	It can be programmed and defined as switch input terminal with multiple functions, see Chapter VI terminal function parameters (switch input and output) input terminal function introduction. (See F6.00-6.04 for details)	The forward and reverse functions can be configured for the terminal; DI5 can be used as a high-speed pulse input terminal, and the upper limit of the input frequency is 50KHZ.
	DI2	Multifunctional input terminal 2		
	DI3	Multifunctional input terminal 3		
	DI4	Multifunctional input terminal 4		
	DI5	Multifunctional input terminal 5		
Power supply	10V	+10V power supply	Provides +10V power supply for external	Maximum output current: 20mA.
	+24V	+24V power supply	Digital signal power supply	Maximum output current: 100mA.
	GND	Power supply common port	Power reference ground (including +10V and +24V)	It is the only ground system on the control board.
	PLC	Multifunctional input common port	Common port of DI1-DI5	Shot-circuited to 24V when leaving the factory.
	CME	Digital output common port	Common port of multifunctional DO1 and DO2.	Short-circuited to GND when leaving the factory.
Relay output terminal	TA TB TC	Programmable relay output	Usually, TA-TB is normally off, and TA-TC is normally on; during operating, TA-TB is normally on, and TA-TC is normally off.	Electric shock rating: NO: 5A 250VAC; NC: 3A 250VAC.

GT20 Product technical specifications

Item	Description	
Input	Rated voltage/ Frequency	three-phase,380V-440Vac;50Hz/60Hz
	Allowed voltage range	Single /three phase 220V(-15%)~240v (+10%) Three phase 380v(-15%)~440v (+10%) ; Voltage unbalance rate: < 3%;Frequency:±5%
Output	Rated voltage (V)	0~Input voltage
	Frequency	0Hz~650Hz
	Overload capacity	150% rated current for 60s
Main control function	Control mode	V/F mode
	Range of speed regulation	1: 100
	starting torque	150% rated torque when 0.5Hz
	Speed control accuracy	±0.5% rated synchronous speed
	Frequency accuracy	Digital set :max. frequency×±0.01% ; Analog set: max.frequency×±0.2%
	Frequency resolution	Digital set :0.01Hz ;Analog set: max. frequency×0.1%
	Torque rise	Auto torque ascension,manual torque ascension 0.1%~30.0%
	V/F curve	Four ways:1 kind of user set V/F curve way、 3 kinds of drop torque characteristic curve way(2.0 times power, 1.7 times power, 1.2 times power
	Acceleration/deceleration curve	One ways:line acceleration/deceleration four acceleration/deceleration time, with the unit of time (minute/second) optional ,max.time set 10 hours
	DC braking	DC braking start frequency:0.00Hz~60.00Hz;braking time:0.0~60.0s; braking current: 0.0~150.0%
	Jogging	Jog frequency range:0.10Hz~50.0Hz
	Multi-speed operating	It can be realized by interior-PLC or control terminal
	Built-in PID	Be convenient to make closed-loop control system
	Auto energy-saving running	According to load condition, V/F curve can be optimized automatically to get the aim of energy-saving running.
	Auto voltage adjustment(AVR)	when the voltage of network changes,the output voltage can be automatically kept constant
Auto current limiting	During the operation, the current is automatically limited to prevent frequent flow to falut trip	
Running function	Running command channel	Operation panel,control terminal and communication port , can be switched through many ways
	Frequency given channel	Digital given, analog voltage given,analog current given, pulse given, communication port given,can be switched through many ways
	Auxiliary frequency given channel	Realize flexible auxiliary frequency fine-tuning and frequency combination operation
	Pulse output terminal	0~10kHz pulse square wave signal output,can realize output setting frequency and output frequency ect.
	Analog output terminal	2 ways analog output,0~10v、 0~20mA to get output of physical quantity such as setting frequency and output frequency
Operating panel	LED display	It can display setting frequency,output frequency,output voltage,output current and so on
Environment	protection function	Phase-loss protection(optional),over current protection,over voltage protection, under voltage protection,over heat protection,over load etc.
	Service location	Indoor,not suffer from sun,dust,corrosive gas,oil fog,steam and so on
	Altitude	Less than 1000m (derating at higher than 1000m)
	Environment temperature	-10°C~+40°C (Derating use in 40°C~50°C)
	Humidity	Less than 90%RH, no condensation
	Vibration	Less than 5.9m/s2(0.6g)
Storage temperature	-40°C~+60°C	
Structure	Protection class	IP20
	Cooling way	Froced air cooling
	Installation Way	Wall-hanging, DIN-rail installation

Specification	W	W1	H	H1	D	D1	Mounting hole diameter (Φ)
GT20-4T0007G GT20-4T0015G GT20-4T0022G GT20-2S0004G GT20-2S0007G GT20-2S0015G	80	68	150	138	136.5	133	5
GT20-4T0040G GT20-4T0055G GT20-2S0022G GT20-2T0022G	106	94	200	188	148.5	144.6	5.5
GT20-4T0075G	108	96	217	205	167	163	5.5
GT20-4T0110G GT20-4T0150G	145	133	277	267	178	171	5.5

Product Application

Easydrive marketing network is complete which set up more than 20 marketing offices around the country, and the products are exported to more than 50 countries and regions. There are stock in central city. Products are widely used in machine tools, wire and cable, plastics, printing, packaging, textiles, electronics, building materials, metallurgy, coal, municipal and others applications.

Plastic Machine



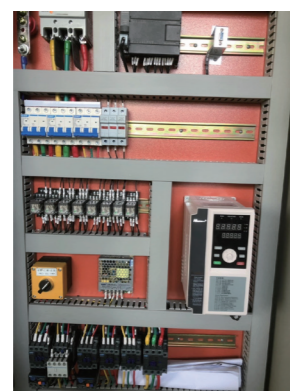
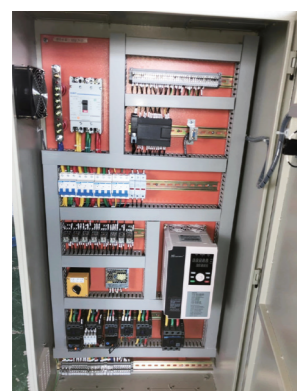
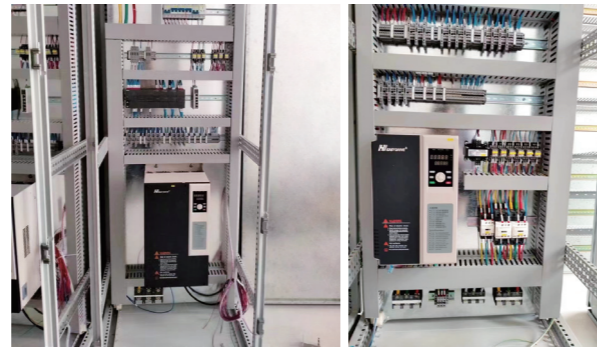
Product Application

Textile Printing & Dyeing



Product Application

HVAC



Product Application

Building Machinery



Product Application

Building Machinery



Product Application

Fan & Pump



Product Application

Petrochemical Engineering



Product Application

Logistics Packaging



Others



