

Optional Non-frosting type level gauge for L100 and L200

Spec. sheet no. LD01-05

Description

Non-frosting type liquid level gauge is used for protection from the frost. Reflex type and transparent type are provided material, application method, gauge valve are entirely same to general use. Generally, for low temperature liquid to be used for refrigerator, the whole surface of liquid level body and cover are frosted, general liquid level gauges is covered with heavy frost and glass surface is entirely invisible. For the sake of this, non-frosting liquid level gauges is provided with methacrylate transparent plate which has high level. So this crosses frosting strata or keeping cool materials, is easily visible the liquid level position clearly. H dimension of lift table, please designate applicable for working temperature or thickness of keeping cool materials.



L100 - NF

Dimensions

Temperature (°C)	Material	Acryl height (mm)
0 ~ -20	killed steel S-25C STPG 38 304SS	75
-20 ~ -45	Al killed steel ASTM-A350-LF2 STPL 39 304SS	100
-46 ~ -100	3.5% Ni steel ASTM-A350-LF3 STPL 46 304SS	150
-101 ~ -160	Austenite Stainless steel 316SS	200



L200 - NF

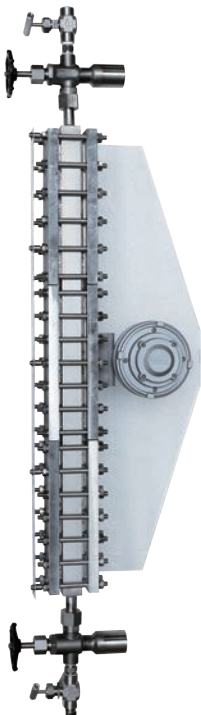
Optional

Illuminator type level gauge for L100 and L200

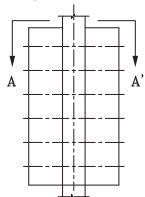
Spec. sheet no. LD01-06

Description

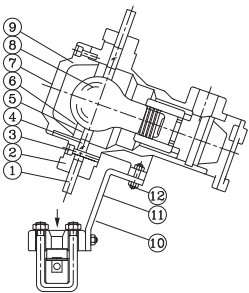
Complete range of size : single and double section WISE explosion-proof illuminator are made in single and double section styles for transparent and reflex gauges. Double section illuminator require only one bulb for complete illumination of two gauge sections.



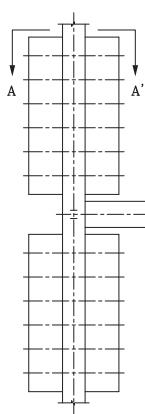
Single Section



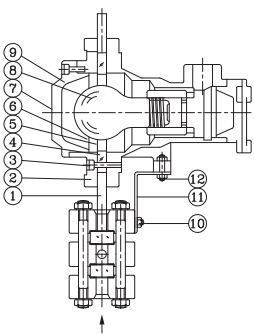
For Reflex Gauge A-A' VIEW



Double Section



For Transparent Gauge A-A' VIEW



Specification

Electricity

Voltage : AC 110 ~ 240 V, 50 Hz, 60 Hz
Bulb light : 30 ~ 100 W

Certificates

KCS Ex d IIC T6 IP65
ATEX II 2G Ex d IIC T6 Gb
IECEx Ex d IIC T6 Gb

No.	Description	Material	Q'ty
1	Reflector	Methacrylate	1
2	Cover	AC 4C	1
3	Bolt	Sus 304	1
4	Glass plate	Glass	3
5	O-ring	NBR	1
6	Gasket	T #1,000	1
7	Cover	AC 4C	1
8	Bulb light		1
9	Light housing	AC 4C	
10	Bolt	SS41	2
11	Holder	SS412	1
12	Bolt nut	SS412	2