



**JCT**  
Analysentechnik

# JES-360Ex Gas Sampling Probe for Pre-Filter Back Flush



## Gas Sampling Probes

Heated Sample Lines

Sample Gas Coolers

Condensate Treatment

Accessories

Gas Conditioning Systems

Sample Gas Converters

### APPLICATION

- Representative continuous gas sampling in processes containing high dust and humidity
- Installation in Ex-zone 1, 2 or 21, 22
- Hazardous gases
- Pressurized processes
- Extractive gas analysis
- Emission (CEMS) and process monitoring
- Removal of dust from the sample gas

### BENEFITS

- Cost-optimized solutions
- No condensation or chemical reactions of sample gas
- Convenient filter replacement
- Low maintenance
- Safe unattended operation
- Easy start-up
- Even for high dust concentrations
- Reliable protection of the analyzer system
- Long filter lifetime

### FEATURES

- Modular design for custom-tailored applications
- Highly efficient filter cleaning
- Homogeneous heating without cold spots
- Large active filter surface
- Filtration from outside to inside
- Filter element change without tools
- Different material of filter elements
- Self-limiting heater for T3 or T4
- Temperature status contact
- Weather protection housing
- Various options and upgrades
- Wide range of accessories

## TECHNICAL DATA

### Model





**JES-360Ex**

Description	stationary gas sampling probe for pre-filter back flush for Ex-zone 1, 2, 21 or 22
-------------	--

### Operation

Temperature (feature S)	temperature class T3: 200 °C, T4: 135 °C
Low temperature status contact (feature O)	temperature class T3: 130 °C, T4: 90 °C
Operating pressure	max. 2 bara (max. 7 bara optional)
Mounting position	5° to 15° incline (recommended), torsion angle max. 15°
Heating-up time	< 1 h
	for options S0, S2: 0 °C to 55 °C for options S1, S3: -20 °C to 55 °C

### Construction

Dimensions over all (W x H x D)	375 x 418 x 449 mm
Dimensions connection box (W x H x D)	120 x 160 x 90 mm
Filter element	2 µm ceramic or 0,2 µm ceramic surface coated
Active filter surface	170 cm <sup>2</sup>
Mounting flange	DN 65, PN6; form A according to EN 1092-1; SS316L or 2" ANSI 150 lbs; according to ASME B16.5
Sample gas inlet	G 3/4" female thread
Sample gas outlet	1/8" NPT female thread
Calibration gas connection (feature C)	pipe 6 mm, SS316
Back purge connection (feature K)	pipe 6 mm, SS316
Connection pre-filter back flush (feature J)	NPT 3/8" female thread
Gas wetted materials	SS316L, ceramic, Viton®
Protection class	connection box IP65, probe IP43
Weight	approx. 15 kg, depending on options
Weather protection housing	SS304, thermal insulated, colour stainless steel natural
Type of protection	heating:  II 2 G Ex db IIC T4, T3  II 2 D Ex tbIIIC T135°C, T200 °C connection box:  II 2 G Ex em II T6/T5/T4  II 2 D Ex tD A21 IP66 T80 °C, T95 °C
Approvals / Signs	heating: PTB 02 ATEX 1116X ; IECEx PTB 07.0055X connection box: PTB 01 ATEX 1016 ; LCIE 02 ATEX 6240 ; IECEx PTB 06.0046 / CE

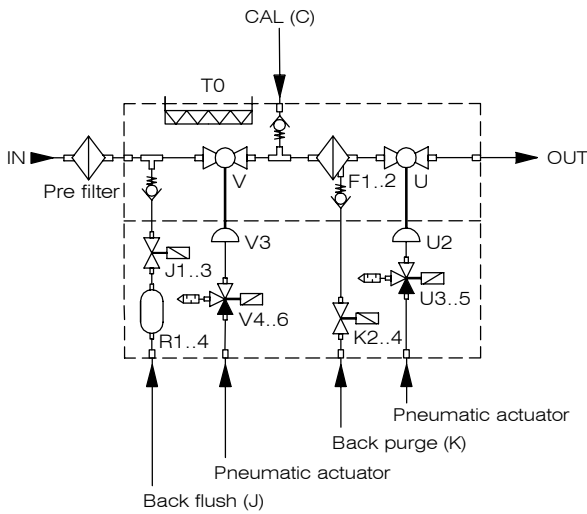
### Electrics

Power supply	115 to 230 VAC 50/60 Hz
Power consumption	approx. 150 to 300 VA

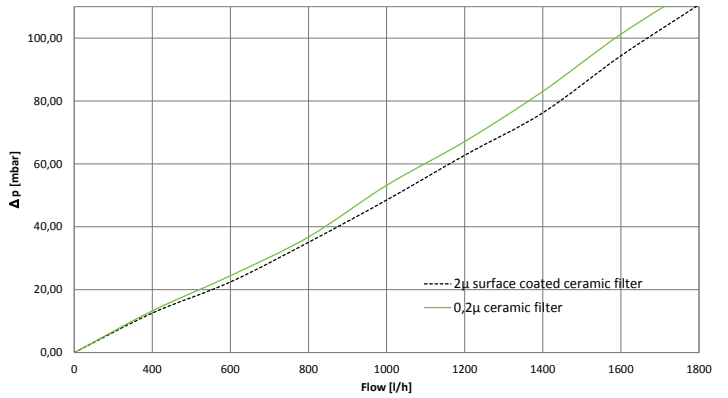
Scope of delivery: sampling probe, mounting material, flange gasket, gasket for sampling pipe, operating manual

## FLOW CHART

This flow chart includes all possible options.



Pressure characteristics in dependence of the gas flow  
(for new filter element and 20 °C)



## DIMENSIONS

Dimensions in mm

