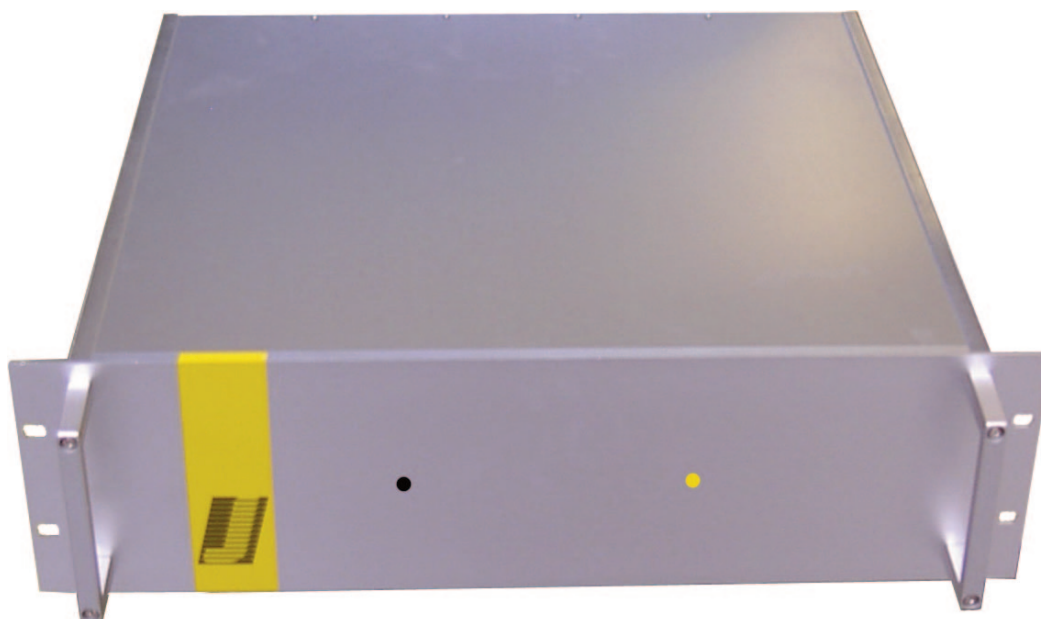




JMSU Heated Stream Selector

JCT
Analysentechnik



Gas Sampling
Probes

Heated Sample
Lines

Sample Gas
Coolers

Condensate
Treatment

Accessories

Gas Conditioning
Systems

Sample Gas
Converters

APPLICATION

- For extractive gas analysis
- For emission and process monitoring
- Stream selector of several measuring points to one analyzer
- For „hot gas“ analysis, e.g. with FTIR

BENEFITS

- No influence on pressure conditions in the analysis system resp. the measuring value due to absolutely constant internal volume of the ball valves in contrast to solenoid valves
- Maximum operational safety
- No damage of the analyser in case of failure
- No change of sample gas
- No cold spots
- Low noise operation also in case of switching
- Low and easy maintenance effort
- Easy mounting and integration in gas analysis systems

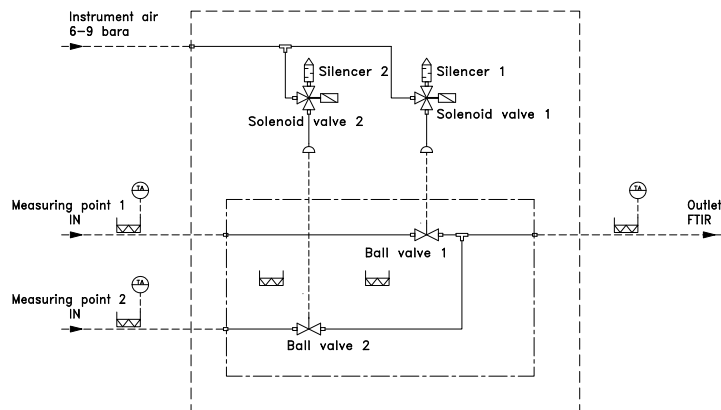
FEATURES

- For 2 to 4 measuring points
- For 19" rack mounting, 3 HU or 4 HU
- Consistent heating
- Controlled heating up to max. 220 °C
- Low and excess temperature status contact
- „Fail safe“ condition in case of power failure
- Power supply 115 or 230 VAC 50/60 Hz
- Stainless steel ball valves with full bore for switching over the measuring points
- Pneumatic actuators for switching the ball valves
- 3/2-way solenoid valves for control of the pneumatic actuators
- Silencer at ventilation outlets of solenoid valves
- Optical shift indication

TECHNICAL DATA

Model	JMSU-2	JMSU-3	JMSU-4
Description	heated stream selector		
Number of measuring points / Housing	2 / 19" 3 HU	3 / 19" 4 HU	4 / 19" 4 HU
Operation			
Operating temperature	up to 220 °C		
Ambient temperature	5° to 45 °C		
Operating pressure	max. 7 bara		
Heating-up time	approx. 30 min		
Construction			
Dimensions over all (W x H x D)	3 HU: 483 x 134 x 410 mm, 4 HU: 483 x 268 x 410 mm		
Weight	approx. 8 kg		
Connections inlet / Outlet	8 mm pipe (rear side)		
Connection instrument air	6 mm „push in“ (rear side)		
Gas wetted materials	SS316		
Protection class	IP 20 (EN60529)		
Housing / Colour	aluminum, natural		
Approvals / Signs	CE		
Electrics			
Power supply	230 VAC or 115 VAC 50/60 Hz		
Power consumption	320 VA (2 measuring points) to 640 VA (4 measuring points)		
Sensor temperature controller	PT100 RTD, IEC 751, temperature sensor, external		
Electrical connection	spring type terminals, clamping range 0,08 to 2,5 mm ²		

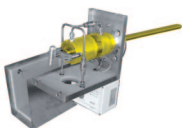
JMSU-2



ORDER CODES

Order code	Description
79.00100	JMSU-2 for 2 sample streams, 3 HU, 230 VAC 50 Hz
79.00101	JMSU-3 for 3 sample streams, 4 HU, 230 VAC 50 Hz
79.00102	JMSU-4 for 4 sample streams, 4 HU, 230 VAC 50 Hz

Gas Sampling **Probes**



Heated Sample **Lines**



Sample Gas **Coolers**



Gas Conditioning **Systems**



NOx **Converter**



and **solutions** for

