



JCT
Analysentechnik

JPXE4 and RGC Temperature Controller and Solid State Relays with HOUSING



APPLICATION

- Digital temperature controller and solid state relay combination for all (very long) **JCT** heated sample lines
- For operation with elevated safety requirements due to a limiter function with permanent shut down and status message
- Also universal applicable for temperature control

BENEFITS

- Long lifetime due to solid state relay instead of electro mechanic relays
- Excess temperature limiter with permanent shut down and low temperature alarm
- Operating voltage of 100 VAC to 3 x 400 VAC
- Self optimising (Autotuning)
- Programmable status contacts
- Easy installation and set up
- High reliability
- Robust compact design

FEATURES

- Ready for use combination of digital temperature controller JPXE4 and solid state relay
- RGC with up to 3 x 32 A switching capacity
- 4-digits LED indication of set point and actual value
- For PT100 and thermocouples
- For 3 phase application
- SSR with varistor protection output
- Forced cooling even for hot environments
- Rugged stainless steel housing

Gas Sampling
Probes

Heated Sample Lines

Sample Gas
Coolers

Condensate
Treatment

Accessories

Gas Conditioning
Systems

Sample Gas
Converters

TECHNICAL DATA

Model

JPXE4 with housing

Description	Universal temperature controller and solid state relay (30 A) combination with housing and forced cooling	Universal temperature controller and solid state relay (30 A) combination with housing
Order code	89.00120 pre-configuration 89.90000	89.00122 pre-configuration 89.90000

Operating Data

Ambient temperature	-10 °C to +50 °C (forced cooling)	-10 °C to +50 °C
Humidity	90 % RH (no condensation)	

Construction

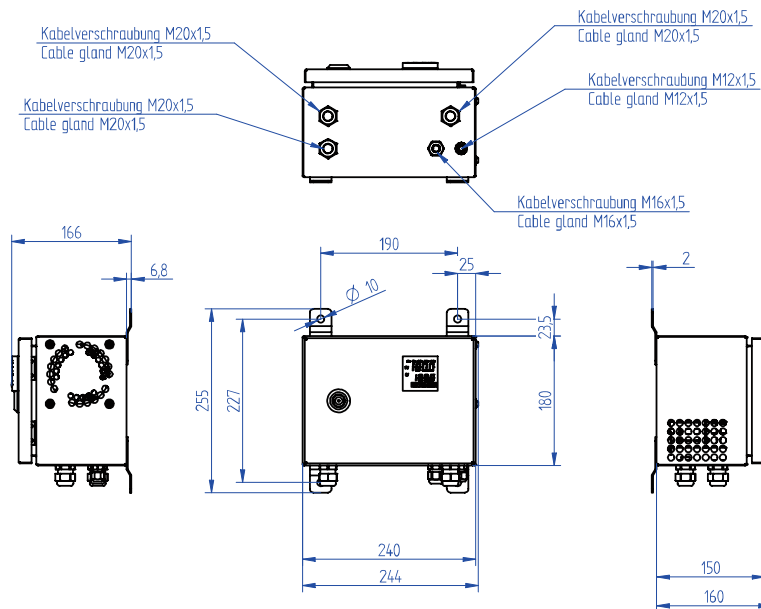
Installation	wall mounting	
Housing material	SS304	
Protection class	IP 21 (EN 60529)	IP 65 (EN 60529)
Approvals	CE	

Electrics

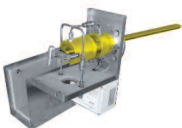
Power supply	3 x 400 VAC, 50/60 Hz +/-10 %	
Rated current (at 25 °C ambient temperature)	3 x 32 A	
Surge current	580 A at 25 °C and t = 10 ms	
Relay contact outlet	1 x changeover contact NO, 20 VAC / 30 VDC 3 A (ohmic load)	
Sensor type	PT100, thermo couple -J, -K, -R, -B, -S, -T, -E, -N, -PL-II	

DIMENSIONS

Dimensions in mm



Gas Sampling **Probes**



Heated Sample **Lines**



Sample Gas **Coolers**



Gas Conditioning **Systems**



NOx **Converter**



and **solutions** for

