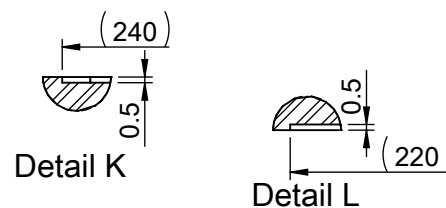


FIXED BENDING RADIUS 固定式彎曲半徑(mm)	
Motor cable 馬達線材	Encoder cable 訊號線材
20	22.5





NOTE :

- 1.Ensure the flatness of mounting surface to be within 0.01/300 mm.
- 2.*Inspected by Hiwin solution.
- 3.Fixed while motor is rotating (including hollow shaft).

1	Cont. torque 連續轉矩	(Nm)	100
2	Peak torque 瞬間轉矩	(Nm)	300
3	Cont. current 連續電流	(Arms)	4.4
4	Peak current 瞬間電流	(Arms)	13.2
5	Max.speed 最高轉速	(rpm)(220Vac)	100(Without payload , 空載)
6	*Repeatability 重現性	(arcsec)	±5
7	*Accuracy range 精度	(arcsec)	±25(With HIWIN Solution)
8	Encoder type 編碼器式樣		Absolute(絕對式)
9	Line count 脈波數	(per revolution)	20 bit(T-code Protocol)
10	Inertia rotating parts 轉動部慣量	(kgm ²)	0.44
11	IP level 保護等級		IP 40
12	Motor color 馬達顏色		Silver , 銀色

All the specifications in the table are in $\pm 10\%$ of tolerance
表內所有規格誤差範圍 $\pm 10\%$

ROUGH $\frac{M}{\%}$		FIT $\frac{M}{\%}$		GRD $\frac{M}{\%}$						SCALE		TYPE		DMYAA-B0SN00-S0-1SS-0-0		DATE		Feb.19.20											
8.0a ▽		3.2a ▽▽		0.8a ▽▽▽						1:X		CUSTOMER		/		DRN		黃偉洲											
SHEET METAL TOLERANCE mm												MATERIAL		/		CHK		陳詠富											
UP TO		6		30		120		300		600		1200		2400		OVER													
±0.1		±0.2		±0.3		±0.4		±0.5		±0.8		±1.0		±1.5															
PART NO.												FM17M2023300												APPD		蔡尚恩			
NAME												DWG. NO												SHEET					
HIWIN®MIKROSYSTEM CORP.												直驅馬達												M20233		A3		1-1	

HIWIN® MIKROSYSTEM CORP.

	Jul.20.20'	吳定韓	修正中空軸尺寸(2007383)	蔡尚恩
	Feb.24.20'	黃偉洲	更新馬達規格。(2002487)	
ITEM	DATE	MODIFIED	DESCRIPTION	APPD