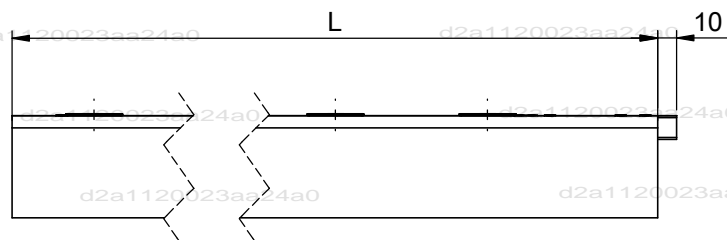
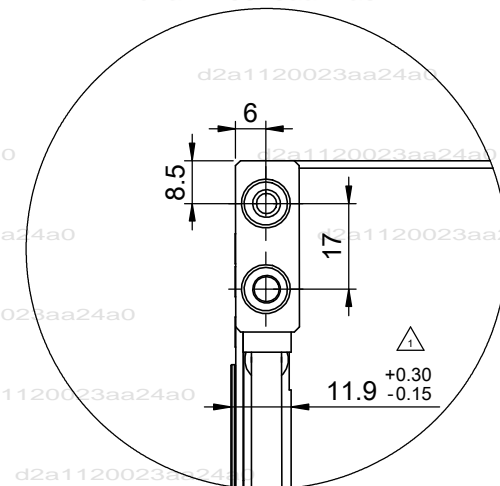
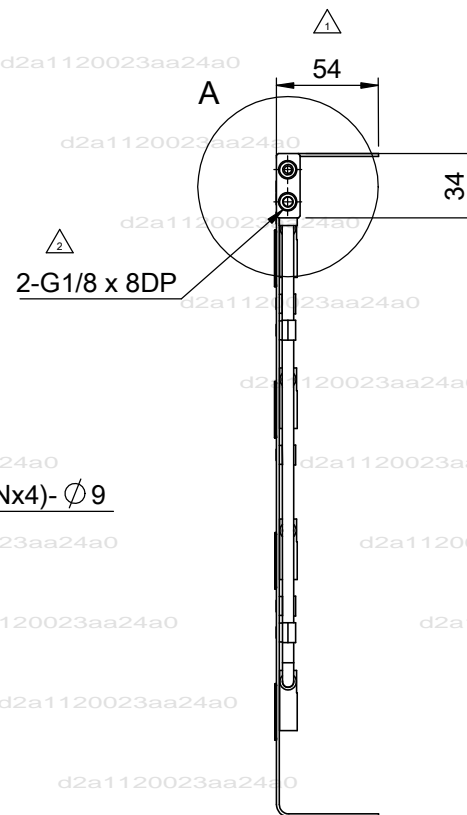
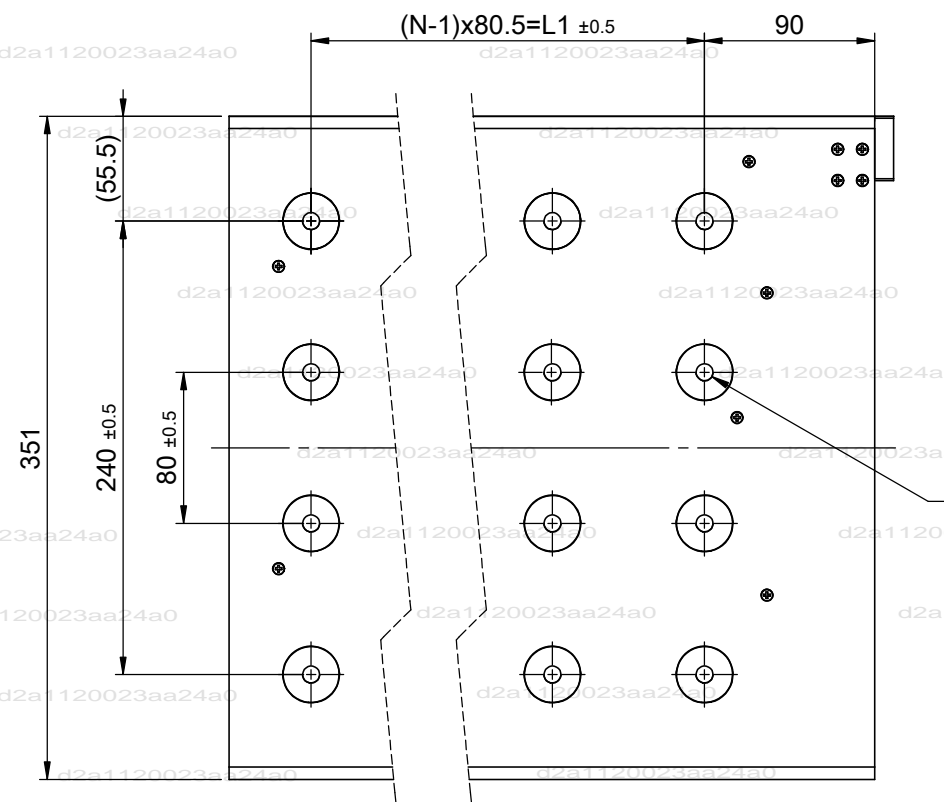


A
B
C
D
E
F
G



Type	L	N	L1	Weight(kg)	Part no	Forcer type	Choosing the type in the table <input type="checkbox"/>
LMFC62	375	4	241.5	1.5	HM12FCD62000	LMFA62	<input type="checkbox"/>
LMFC63	536	6	402.5	2.1	HM12FCD63000	LMFA63	<input type="checkbox"/>
LMFC64	697	8	563.5	2.8	HM12FCD64000	LMFA64	<input type="checkbox"/>

ITEM	DATE	MODIFIED	DESCRIPTION	APPD
2	Oct.21.19"	黃曼章	replace 1/8"PT screw into G1/8 screw	鄧朝欽
1	Aug.20.19"	黃曼章	Change the dimensions	鄧朝欽

ROUGH $\frac{M}{\%}$	FIT $\frac{M}{\%}$	GRD	SCALE	TYPE	As table	DATE	Jun.14.19"
8.0a ▽	3.2a ▽▽	0.8a ▽▽▽	1:X	CUSTOMER		DRN	黃曼章
MACHINING PART TOLERANCE mm 1:10				MATERIAL		CHK	陳柏宏
UP TO 6	6	30	120	PART NO.	As table	APPD	鄧朝欽
±0.1	±0.2	±0.3	±0.4				
±0.5	±0.8	±1.0	±1.5				
HIWIN® MIKROSYSTEM CORP.				NAME		DWG. NO	SHEET
				動子精密水冷		M19632	A3 1-1