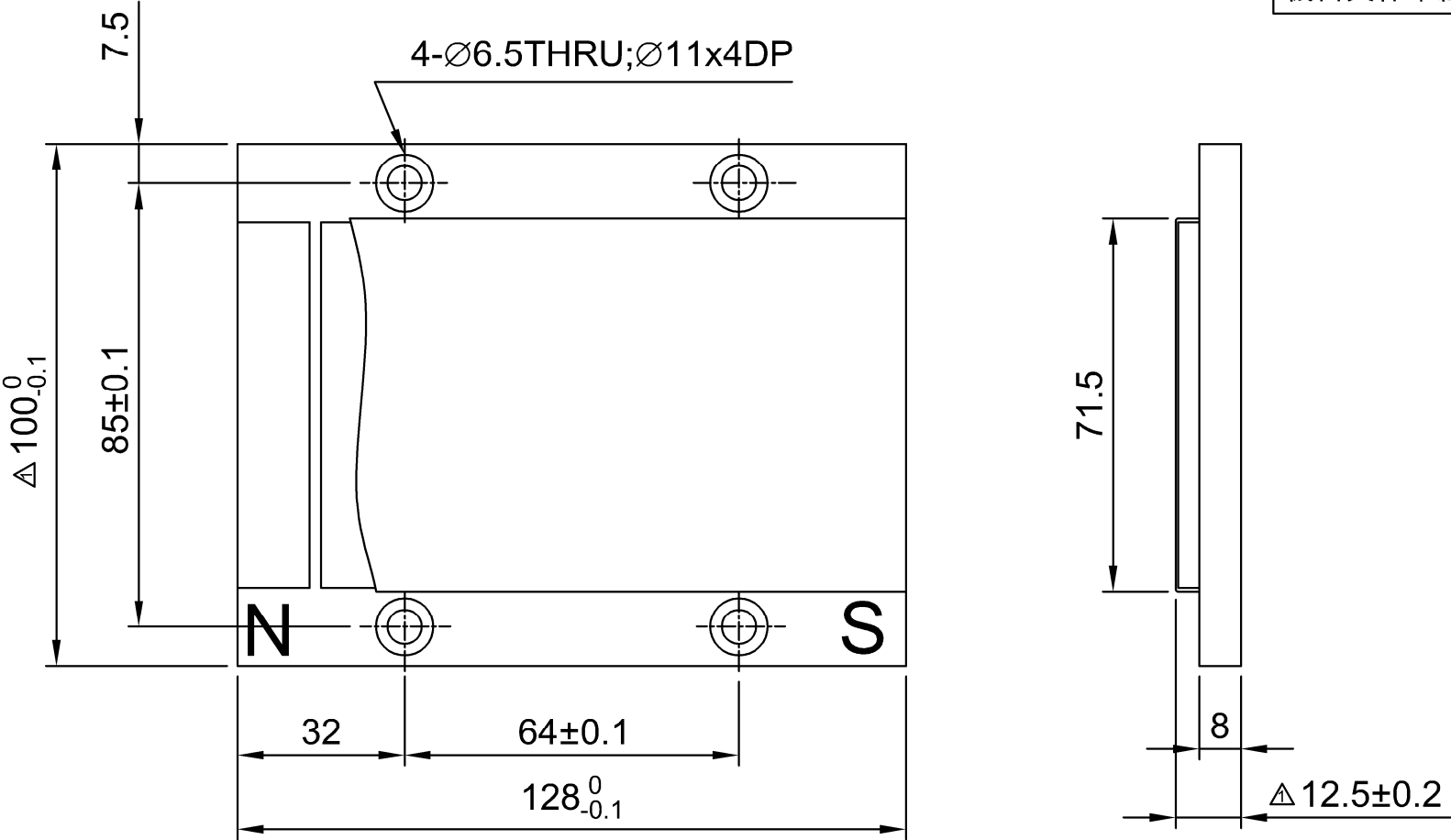


HIWIN CONFIDENTIAL

機密文件未經許可，嚴禁複製



Note:

- △1. Unit mass of stator: 8.2 kg/m
2. Warning label of strong magnetic is provided by accessories package
3. Edges of cover must inside the edges of base plate in top view.
Overall assembly length including cover, base plate and magnet should meet the tolerance on the drawing
4. Part no: HM12SS30D0A1

△	May 20.15	黃宥驊	Modify tolerance	
ITEM	DATE	MODIFIED	DESCRIPTION	APPD

ROUGH % 8.0a ▽	FIT % 3.2a ▽▽	GRD 0.8a ▽▽▽	SCALE 1:X	TYPE	LMS3S0	DATE	Feb.04.13
				CUSTOMER		DRN	王湘茹
				MATERIAL		CHK	
				PART NO	HM12M10G0700	APPD	
				NAME	DWG NO	SHEET	
				Stator unit	M10G07	A2	1-1