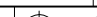



WIRING DIAGRAM	
Signal	Cable
V	White
U	Red
W	Black
GND	Shielding
Thermal+	White
Thermal-	Brown

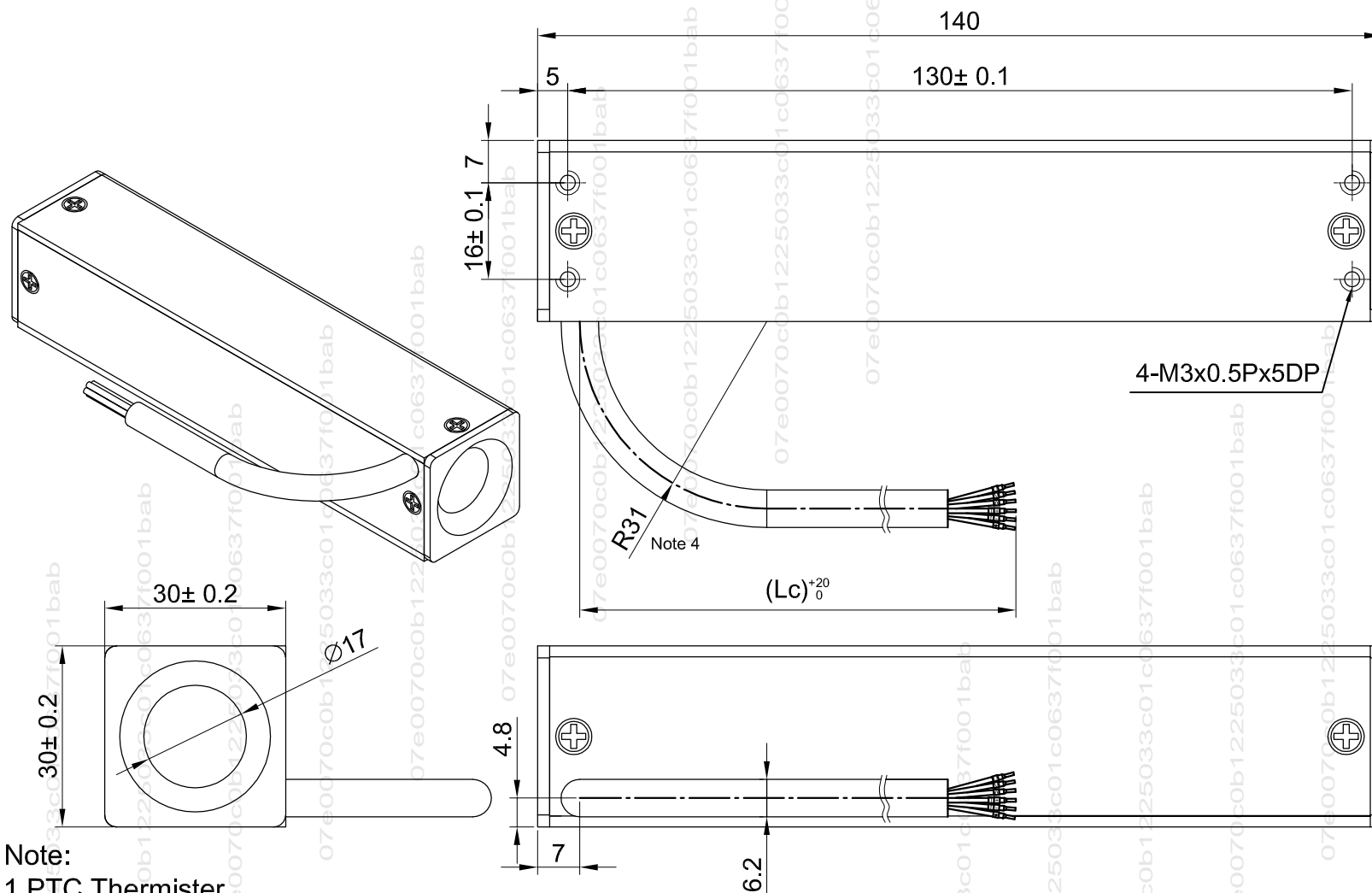
### LMT6Q Specification

1	Cont. force	N	35
2	Cont. current	Arms	1.3
3	Peak force(1s)	N	140
4	Peak current(1s)	Arms	5.2
5	Resistance(line to line)	ohm	14.5
6	Inductance(line to line)	mH	5.7
7	Mass of forcer	kg	0.34
8	Back emf constant	Vrms/(m/s)	13.2

	Part Number	Lc	Choice
1	HM18FT600300	500	
2	HM18FT601800	600	
3	HM18FT601900	700	
4	HM18FT602000	800	
5	HM18FT602100	900	
6	HM18FT602200	1000	
7	HM18FT602300	1100	
8	HM18FT602400	1200	

ROUGH % 8.0a ▽			FIT % 3.2a ▽▽			GRD 0.8a ▽▽▽					SCALE 1:X		TYPE		LMT6Q		DATE		Feb.25.15				
TOLERANCE mm												CUSTOMER				DRN		黃聖勛					
UP TO		6		30		120		300		600		1200		2400		OVER 2400		MATERIAL		CHK 范智凱			
± 0.1		± 0.2		± 0.3		± 0.4		± 0.5		± 0.8		± 1.0		± 1.5				PART NO		如上表			
												NAME				DWG NO				SHEET			
												Forcer Unit				M10K6Q				A1		1-1	

← Moving direction (+)



Note:

- 1.PTC Thermister
- 2.Except dimensions,all the specifications in the table are in  $\pm 10\%$  of tolerance
- 3.Choosing the length of cable(Lc) in the table.
- 4.Minimum bending radius(Fixed installation)

ITEM	DATE	MODIFIED	DESCRIPTION	APPD