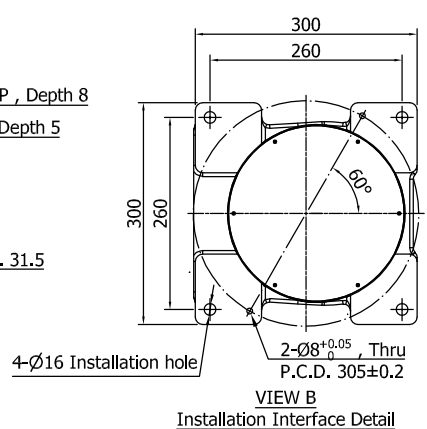
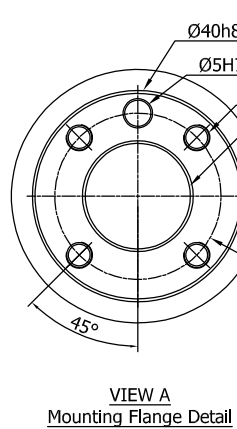
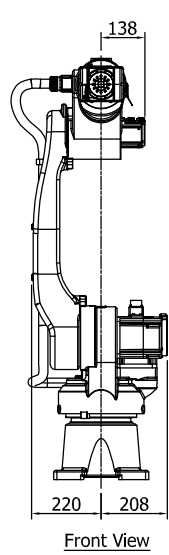
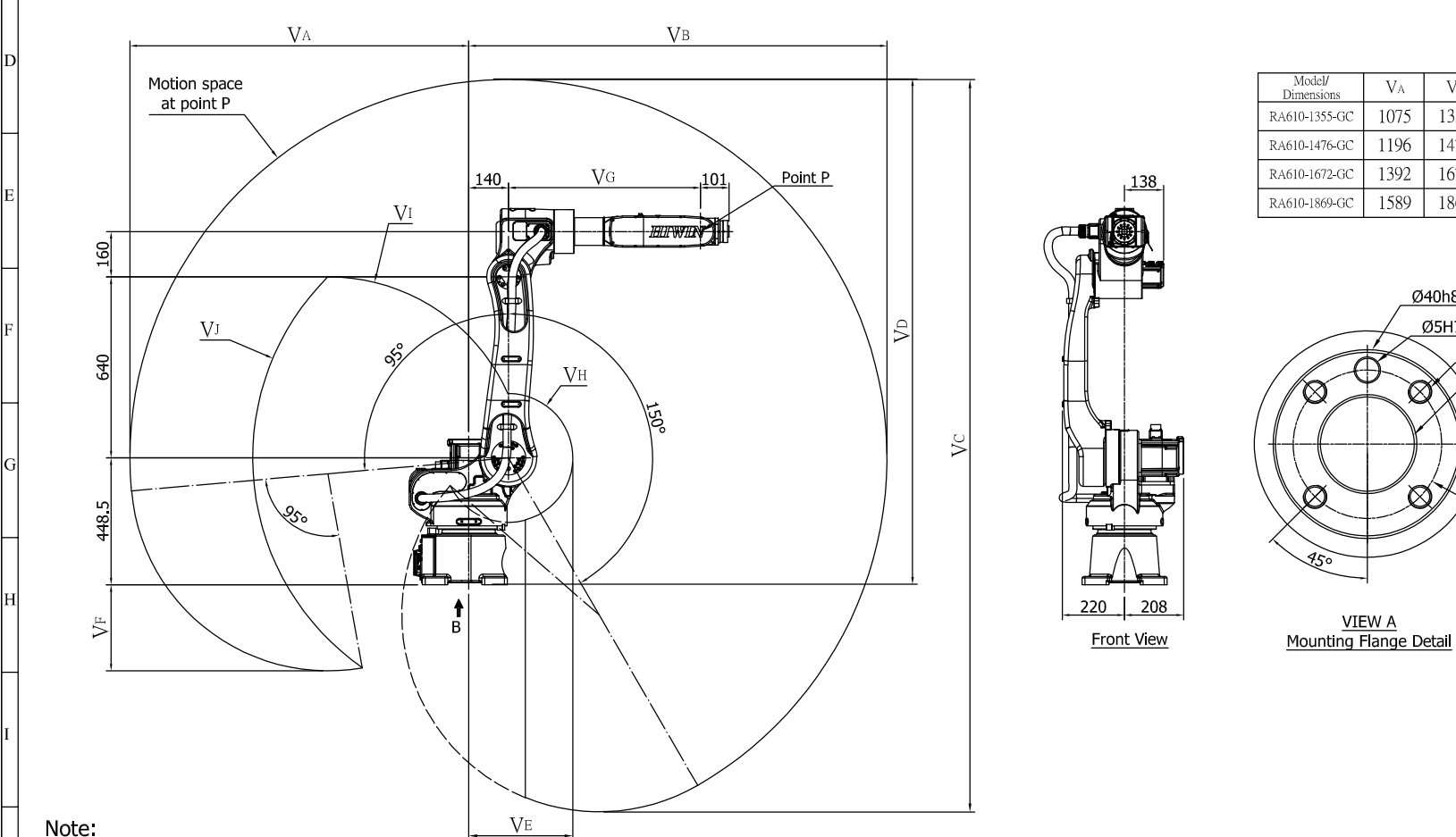


0	11	12	13			
SPECIFICATIONS						
Model			RA610-GC			
Degrees of freedom			6			
Load capacity [Kg]			12	10	10	7
Maximum load capacity [Kg]			14	12	12	9
Working Range [deg]	Maximum Motion Radius [mm]	1355	1476	1672	1869	
	J1	+170° ~ -170°				
	J2	+95° ~ -150°				
	J3	+185° ~ -85°				
	J4	+190° ~ -190°				
	J5	+135° ~ -135°				
	J6	+360° ~ -360°				
Repeatability [mm]			±0.05		±0.06	
Cycle time [s]			1.0s			
Weight [Kg]			143	147	150	152
Protection rating			IP54(IP65 at Wrist)			



Note:

- NOTE:
1. All rights reserved.
 2. Please note that the information is subject to be revised without advance notice.
 3. We do not have duty for any damage or loss caused by the use of the information.

HIWIN TECHNOLOGIES CORP.			
MODEL	RA610-GC/RT610-GC	DWG	Angus
DWG.NO.	RA610Z21001	CHK	KyleWong
DATE	2020/05/08	APPD	YanYu