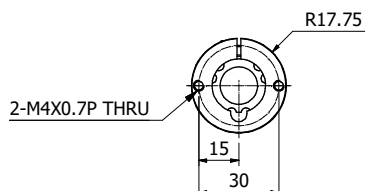
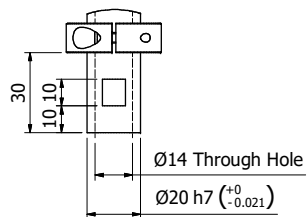
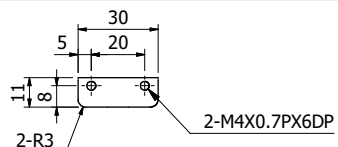


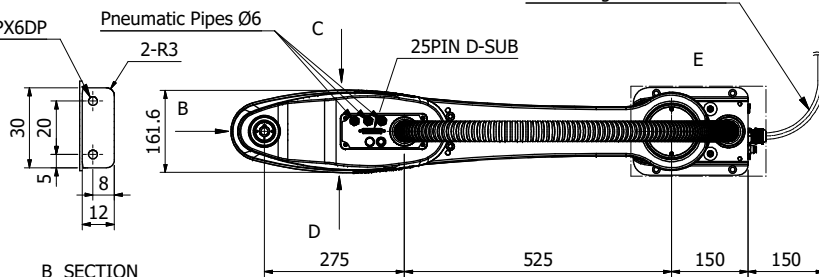
A DETAIL



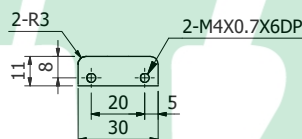
- Note:
1. All rights reserved.
 2. Please note that the information is subject to be revised without advance notice.
 3. We do not have duty for any damage or loss caused by the use of the information.



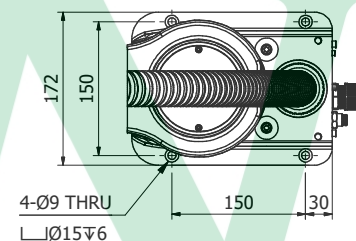
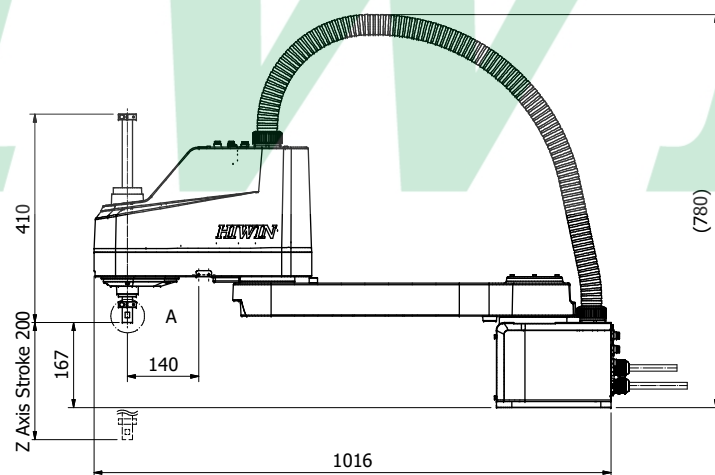
C SECTION



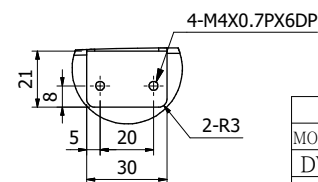
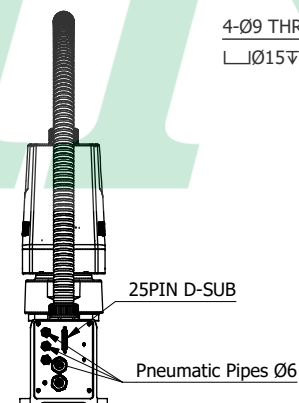
B SECTION



D SECTION



E DETAIL



F DETAIL

Specifications

Degrees of Freedom		4
Nominal Payload/Load Capacity		5 kg
Max. Payload/Load Capacity		10 kg
Reach Radius		800 mm
Motion/Working Range	J1	±130°
	J2	±150°
	J3	200mm
	J4	±360°
Tool Wiring		25PIN D-SUB
Tool Pneumatic Pipes		Ø6x3
Weight		32 kg
Controller		RC4
Protection Rating		IP20

HIWIN TECHNOLOGIES CORP.			
MODEL NAME	RS410-800-200-LU	DWG	Jack Chao
DWG.NO.	RS410Z0B002	CHK	Alex Lin
DATE	2020/4/16	APPD	Kyle Wong