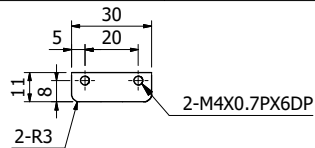
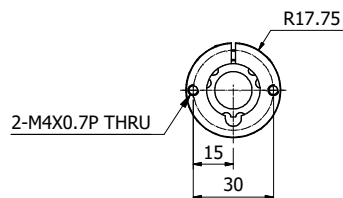
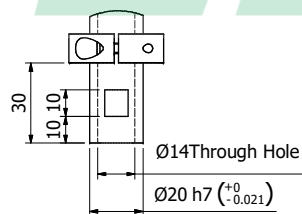
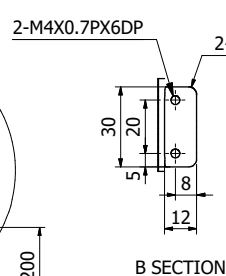


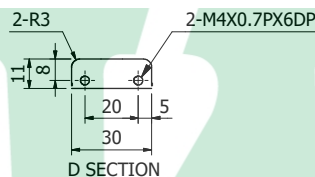
A DETAIL



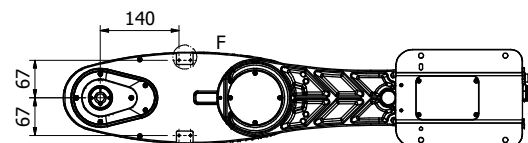
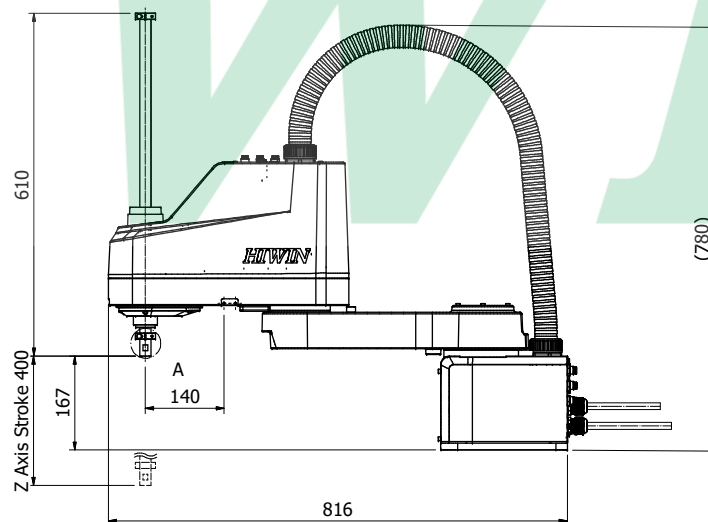
C SECTION



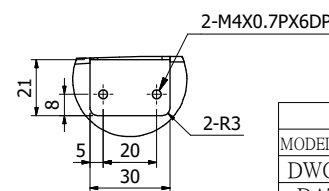
B SECTION



D SECTION

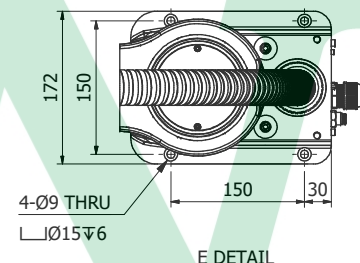


F DETAIL

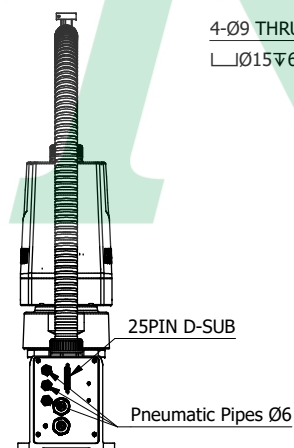


Specifications

| | | |
|-------------------------------|----|-------------|
| Degrees of Freedom | | 4 |
| Nominal Payload/Load Capacity | | 5 kg |
| Max. Payload/Load Capacity | | 10 kg |
| Reach Radius | | 600 mm |
| Motion/Working Range | J1 | ±130° |
| | J2 | ±150° |
| | J3 | 400mm |
| | J4 | ±360° |
| Tool Wiring | | 25PIN D-SUB |
| Tool Pneumatic Pipes | | Ø6x3 |
| Weight | | 30 kg |
| Controller | | RC4 |
| Protection Rating | | IP20 |



E DETAIL



| | | | |
|--------------------------|------------------|------|-----------|
| HIWIN TECHNOLOGIES CORP. | | | |
| MODEL NAME | RS410-600-400-LU | DWG | Jack Chao |
| DWG.NO. | RS410Z09002 | CHK | Alex Lin |
| DATE | 2020/4/16 | APPD | Kyle Wong |



Note:
 1. All rights reserved.
 2. Please note that the information is subject to be revised without advance notice.
 3. We do not have duty for any damage or loss caused by the use of the information.